



SZABO SCANDIC

Part of Europa Biosite

Produktinformation



Forschungsprodukte & Biochemikalien



Zellkultur & Verbrauchsmaterial



Diagnostik & molekulare Diagnostik



Laborgeräte & Service

Weitere Information auf den folgenden Seiten!
See the following pages for more information!



Lieferung & Zahlungsart

siehe unsere [Liefer- und Versandbedingungen](#)

Zuschläge

- Mindermengenzuschlag
- Trockeneiszuschlag
- Gefahrgutzuschlag
- Expressversand

SZABO-SCANDIC HandelsgmbH

Quellenstraße 110, A-1100 Wien

T. +43(0)1 489 3961-0

F. +43(0)1 489 3961-7

mail@szabo-scandic.com

www.szabo-scandic.com

[linkedin.com/company/szaboscandic](https://www.linkedin.com/company/szaboscandic) 

Interferon alpha 1 antibody [IFNA/6689]

Cat. No. GTX03591

Host	Mouse
Clonality	Monoclonal
Isotype	IgG1
Application	WB, IHC-P
Reactivity	Human

Package
100 µg

APPLICATION

Application Note

*Optimal dilutions/concentrations should be determined by the researcher.

Suggested dilution	Recommended dilution
WB	1-2ug/ml
IHC-P	1-2ug/ml

Note : Requires heating tissue sections in 10mM Tris with 1mM EDTA (pH 9.0) for 45 min at 95 °C followed by cooling at RT for 20 minutes

Not tested in other applications.

Product Note This antibody is specific for human interferon alpha 1 and does not cross react with human interferon alpha 2.

PROPERTIES

Form	Liquid
Buffer	10mM PBS, 0.05% BSA
Preservative	0.05% sodium azide
Storage	Store as concentrated solution. Centrifuge briefly prior to opening vial. For short-term storage (1-2 weeks), store at 4°C. For long-term storage, aliquot and store at -20°C or below. Avoid multiple freeze-thaw cycles.
Concentration	0.2 mg/ml (Please refer to the vial label for the specific concentration.)
Immunogen	Recombinant human IFNA1 protein.
Purification	Protein A/G purified
Conjugation	Unconjugated

Note

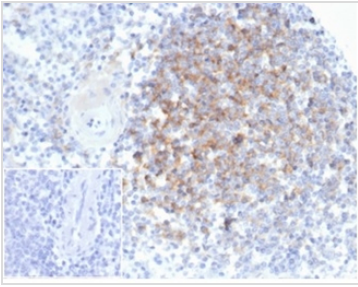
For laboratory research use only. Not for any clinical, therapeutic, or diagnostic use in humans or animals. Not for animal or human consumption.

Purchasers shall not, and agree not to enable third parties to, analyze, copy, reverse engineer or otherwise attempt to determine the structure or sequence of the product.

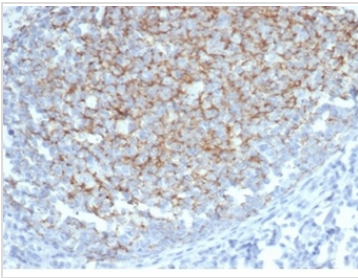


For full product information, images and publications, please visit our [website](#).

DATA IMAGES

**GTX03591 IHC-P Image**

IHC-P analysis of human spleen tissue using GTX03591 Interferon alpha 1 antibody [IFNA/6689].
Dilution : 2µg/ml

**GTX03591 IHC-P Image**

IHC-P analysis of human tonsil tissue using GTX03591 Interferon alpha 1 antibody [IFNA/6689].
Antigen retrieval : HIER by Tris/EDTA (pH9.0), 45min
Dilution : 2µg/ml



For full product information, images and publications, please visit our [website](#).