



# SZABO SCANDIC

Part of Europa Biosite

## Produktinformation



Forschungsprodukte & Biochemikalien



Zellkultur & Verbrauchsmaterial



Diagnostik & molekulare Diagnostik



Laborgeräte & Service

Weitere Information auf den folgenden Seiten!  
See the following pages for more information!



### Lieferung & Zahlungsart

siehe unsere [Liefer- und Versandbedingungen](#)

### Zuschläge

- Mindermengenzuschlag
- Trockeneiszuschlag
- Gefahrgutzuschlag
- Expressversand

### SZABO-SCANDIC HandelsgmbH

Quellenstraße 110, A-1100 Wien

T. +43(0)1 489 3961-0

F. +43(0)1 489 3961-7

[mail@szabo-scandic.com](mailto:mail@szabo-scandic.com)

[www.szabo-scandic.com](http://www.szabo-scandic.com)

[linkedin.com/company/szaboscandic](https://www.linkedin.com/company/szaboscandic) 

## SLC47A1 antibody

**Cat. No. GTX03645**

<b>Host</b>	Rabbit
<b>Clonality</b>	Polyclonal
<b>Isotype</b>	IgG
<b>Application</b>	WB
<b>Reactivity</b>	Mouse, Rat

**Package**  
50 µl

## APPLICATION

**Application Note**

\*Optimal dilutions/concentrations should be determined by the researcher.

Suggested dilution	Recommended dilution
WB	1:200-1:1000

Not tested in other applications.

**Calculated MW** 62 kDa. ([Note](#))**Product Note** We do not recommend use of this product for Human samples.

## PROPERTIES

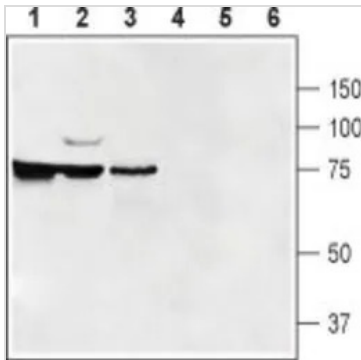
**Form** Liquid**Buffer** PBS pH 7.4, 1% BSA**Preservative** 0.05% sodium azide**Storage** Store as concentrated solution. Centrifuge briefly prior to opening vial. For short-term storage (1-2 weeks), store at 4°C. For long-term storage, aliquot and store at -20°C or below. Avoid multiple freeze-thaw cycles.**Concentration** 0.8 mg/ml (Please refer to the vial label for the specific concentration.)**Immunogen** Peptide (C)ESHGEIMMTDLEKK, corresponding to amino acid residues 496-509 of mouse SLC47A1 (Accession Q8K0H1, 5th intracellular loop).**Purification** Purified by antigen-affinity chromatography**Conjugation** Unconjugated**Note** For laboratory research use only. Not for any clinical, therapeutic, or diagnostic use in humans or animals. Not for animal or human consumption.

Purchasers shall not, and agree not to enable third parties to, analyze, copy, reverse engineer or otherwise attempt to determine the structure or sequence of the product.



For full product information, images and publications, please visit our [website](#).

## DATA IMAGES

**GTX03645 WB Image**

WB analysis of rat kidney (lanes 1 and 4), mouse brain (lanes 2 and 5), and rat testis (lanes 3 and 6) tissue lysates using GTX03645 SLC47A1 antibody.

Lane 1-3 : Primary antibody

Lane 4-6 : Primary antibody preincubated with immunogen peptide

Dilution : 1:200



For full product information, images and publications, please visit our [website](#).