



# SZABO SCANDIC

Part of Europa Biosite

## Produktinformation



Forschungsprodukte & Biochemikalien



Zellkultur & Verbrauchsmaterial



Diagnostik & molekulare Diagnostik



Laborgeräte & Service

Weitere Information auf den folgenden Seiten!  
See the following pages for more information!



### Lieferung & Zahlungsart

siehe unsere [Liefer- und Versandbedingungen](#)

### Zuschläge

- Mindermengenzuschlag
- Trockeneiszuschlag
- Gefahrgutzuschlag
- Expressversand

### SZABO-SCANDIC HandelsgmbH

Quellenstraße 110, A-1100 Wien

T. +43(0)1 489 3961-0

F. +43(0)1 489 3961-7

[mail@szabo-scandic.com](mailto:mail@szabo-scandic.com)

[www.szabo-scandic.com](http://www.szabo-scandic.com)

[linkedin.com/company/szaboscandic](https://www.linkedin.com/company/szaboscandic) 

## Human IL23 protein, His Tag

**Cat. No. GTX03648-pro**

<b>Application</b>	Binding Assay
<b>Species</b>	Human

**Package**  
100 µg

## APPLICATION

**Application Note**

Immobilized Recombinant Human IL23 at 2µg/mL (100 µL/well) can bind Recombinant Human IL23R with a linear range of 114-458 ng/mL.

**Observed MW** 20, 40-50 kDa.

## PROPERTIES

**Form** Lyophilized powder

**Buffer** Reconstitute with ddH<sub>2</sub>O to 0.1-0.5 mg/mL. Lyophilized from a 0.22µm filtered-PBS pH 7.4.

**Preservative** No preservative

**Storage** Store as concentrated solution. Centrifuge briefly prior to opening vial. For short-term storage (1-2 weeks), store at 4°C. For long-term storage, aliquot and store at -20°C or below. Avoid multiple freeze-thaw cycles.

**Region/Sequence** The target protein is expressed with sequence (Ile23-Ser328 & Arg20-Pro189) of human IL-23 (Accession #NP\_002178.2 / NP\_057668.1) fused with a 6×His tag at the N-terminus (IL23A).

**Expression System** HEK293 cells

**Purity** > 95% by SDS-PAGE

**Endotoxin** <1.0EU/µg (determined by the LAL method)

**Conjugation** Unconjugated

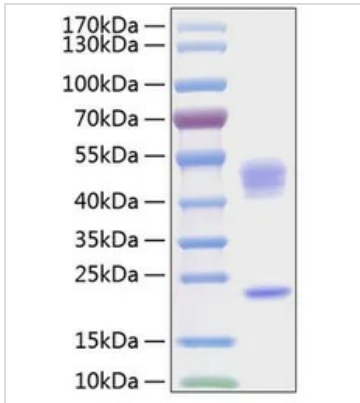
**Note** For laboratory research use only. Not for any clinical, therapeutic, or diagnostic use in humans or animals. Not for animal or human consumption.

Purchasers shall not, and agree not to enable third parties to, analyze, copy, reverse engineer or otherwise attempt to determine the structure or sequence of the product.



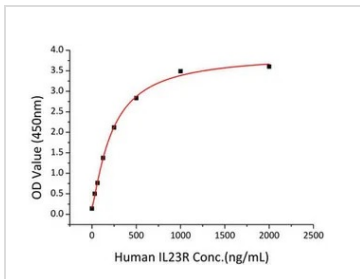
For full product information, images and publications, please visit our [website](#).

DATA IMAGES



**GTX03648-pro Image**

SDS-PAGE of GTX03648-pro Human IL23 protein, His Tag.



**GTX03648-pro Image**

Functional ELISA analysis of immobilized GTX03648-pro Human IL23 protein at 2µg/mL (100 µL/well) can bind recombinant Human IL23R with a linear range of 114-458 ng/mL.



For full product information, images and publications, please visit our [website](#).