



SZABO SCANDIC

Part of Europa Biosite

Produktinformation



Forschungsprodukte & Biochemikalien



Zellkultur & Verbrauchsmaterial



Diagnostik & molekulare Diagnostik



Laborgeräte & Service

Weitere Information auf den folgenden Seiten!
See the following pages for more information!



Lieferung & Zahlungsart

siehe unsere [Liefer- und Versandbedingungen](#)

Zuschläge

- Mindermengenzuschlag
- Trockeneiszuschlag
- Gefahrgutzuschlag
- Expressversand

SZABO-SCANDIC HandelsgmbH

Quellenstraße 110, A-1100 Wien

T. +43(0)1 489 3961-0

F. +43(0)1 489 3961-7

mail@szabo-scandic.com

www.szabo-scandic.com

[linkedin.com/company/szaboscandic](https://www.linkedin.com/company/szaboscandic) 

Apolipoprotein CIII antibody

Cat. No. GTX03650

| | |
|--------------------|-------------------|
| Host | Rabbit |
| Clonality | Polyclonal |
| Isotype | IgG |
| Application | WB, IHC-P |
| Reactivity | Human, Mouse, Rat |

Package
100 µl

APPLICATION

Application Note

*Optimal dilutions/concentrations should be determined by the researcher.

| Suggested dilution | Recommended dilution |
|--------------------|----------------------|
| WB | 1:500-1:2000 |
| IHC-P | 1:100-1:200 |

Not tested in other applications.

Calculated MW 11 kDa. ([Note](#))

PROPERTIES

| | |
|----------------------|--|
| Form | Liquid |
| Buffer | PBS pH7.3, 50% glycerol |
| Preservative | 0.02% sodium azide |
| Storage | Store as concentrated solution. Centrifuge briefly prior to opening vial. For short-term storage (1-2 weeks), store at 4°C. For long-term storage, aliquot and store at -20°C or below. Avoid multiple freeze-thaw cycles. |
| Concentration | Batch dependent (Please refer to the vial label for the specific concentration.) |
| Immunogen | A synthetic peptide corresponding to a sequence within amino acids 1-99 of human Apolipoprotein C3 (NP_000031.1). |
| Purification | Purified by affinity chromatography |
| Conjugation | Unconjugated |

Note

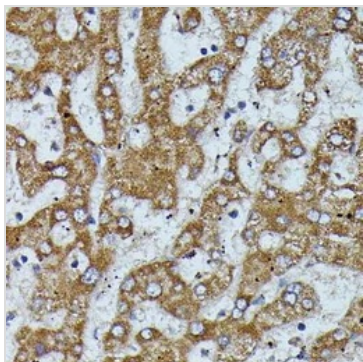
For laboratory research use only. Not for any clinical, therapeutic, or diagnostic use in humans or animals. Not for animal or human consumption.

Purchasers shall not, and agree not to enable third parties to, analyze, copy, reverse engineer or otherwise attempt to determine the structure or sequence of the product.



For full product information, images and publications, please visit our [website](#).

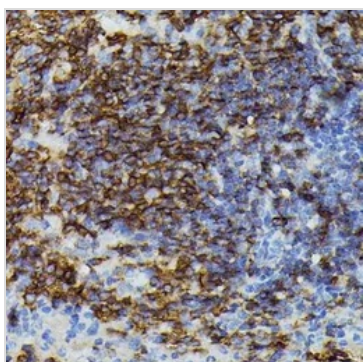
DATA IMAGES

**GTX03650 IHC-P Image**

IHC-P analysis of human liver tissue using GTX03650 Apolipoprotein CIII antibody.

Antigen retrieval : Microwave antigen retrieval with 10 mM PBS buffer pH 7.2

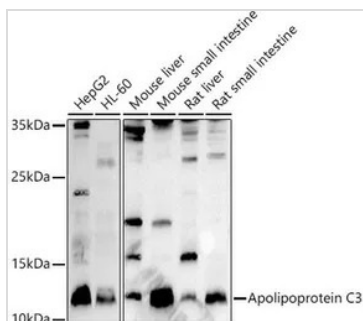
Dilution : 1:100

**GTX03650 IHC-P Image**

IHC-P analysis of mouse spleen tissue using GTX03650 Apolipoprotein CIII antibody.

Antigen retrieval : Microwave antigen retrieval with 10 mM PBS buffer pH 7.2

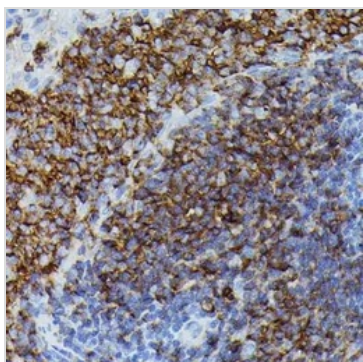
Dilution : 1:100

**GTX03650 WB Image**

WB analysis of various cell lysates using GTX03650 Apolipoprotein CIII antibody.

Dilution : 1:1000

Loading : 25µg per lanes

**GTX03650 IHC-P Image**

IHC-P analysis of rat spleen tissue using GTX03650 Apolipoprotein CIII antibody.

Antigen retrieval : Microwave antigen retrieval with 10 mM PBS buffer pH 7.2

Dilution : 1:100



For full product information, images and publications, please visit our [website](#).