



SZABO SCANDIC

Part of Europa Biosite

Produktinformation



Forschungsprodukte & Biochemikalien



Zellkultur & Verbrauchsmaterial



Diagnostik & molekulare Diagnostik



Laborgeräte & Service

Weitere Information auf den folgenden Seiten!
See the following pages for more information!



Lieferung & Zahlungsart

siehe unsere [Liefer- und Versandbedingungen](#)

Zuschläge

- Mindermengenzuschlag
- Trockeneiszuschlag
- Gefahrgutzuschlag
- Expressversand

SZABO-SCANDIC HandelsgmbH

Quellenstraße 110, A-1100 Wien

T. +43(0)1 489 3961-0

F. +43(0)1 489 3961-7

mail@szabo-scandic.com

www.szabo-scandic.com

[linkedin.com/company/szaboscandic](https://www.linkedin.com/company/szaboscandic) 

VGLUT2 antibody [S29-29]

Cat No. GTX03657

Host	Mouse
Clonality	Monoclonal
Isotype	IgG1
Application	WB, ICC/IF, IHC
Reactivity	Human, Mouse, Rat

Package
100 µg

APPLICATION

Application Note

*Optimal dilutions/concentrations should be determined by the researcher.

Suggested dilution	Dilution
WB	1:1000
ICC/IF	1:100
IHC	Assay dependent

Not tested in other applications.

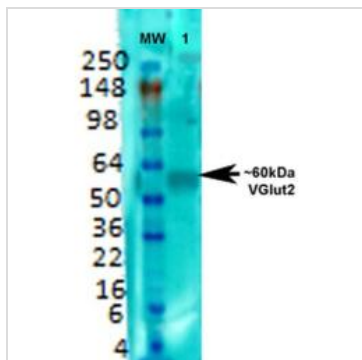
PROPERTIES

Form	Liquid
Buffer	PBS pH7.4, 50% glycerol
Preservative	0.09% sodium azide
Storage	Store as concentrated solution. Centrifuge briefly prior to opening vial. For short-term storage (1-2 weeks), store at 4°C. For long-term storage, aliquot and store at -20°C or below. Avoid multiple freeze-thaw cycles.
Concentration	1 mg/ml (Please refer to the vial label for the specific concentration.)
Immunogen	Fusion protein amino acids 501-582 (cytoplasmic C-terminus) of rat VGlut2.
Purification	Protein G purified
Conjugation	Unconjugated
Note	For laboratory use only. Not for any clinical, therapeutic, or diagnostic use in humans or animals. Not for animal or human consumption.



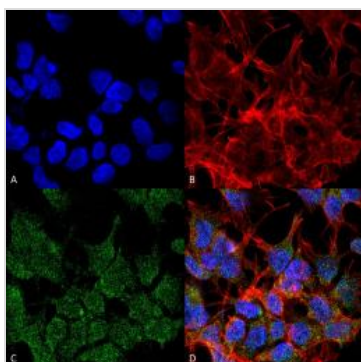
For full product information, images and publications, please visit our [website](#).

DATA IMAGES

**GTX03657 WB Image**

WB analysis of rat brain membrane lysates using GTX03657 VGLUT2 antibody [S29-29].

Dilution : 1:1000

**GTX03657 ICC/IF Image**

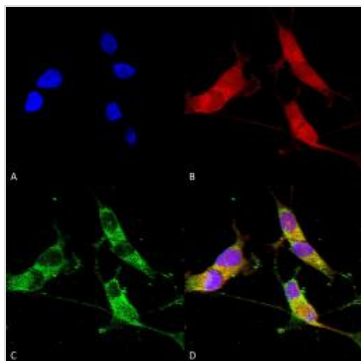
ICC/IF analysis of 4% PFA-fixed SK-N-BE cells using GTX03657 VGLUT2 antibody [S29-29].

Dilution : 1:100

Green : Primary antibody

Red : Actin

Blue : Hoechst nuclear stain

**GTX03657 ICC/IF Image**

ICC/IF analysis of 4% PFA-fixed SH-SY5Y cells using GTX03657 VGLUT2 antibody [S29-29].

Dilution : 1:50

Green : Primary antibody

Red : Actin

Blue : Hoechst nuclear stain



For full product information, images and publications, please visit our [website](#).