



SZABO SCANDIC

Part of Europa Biosite

Produktinformation



Forschungsprodukte & Biochemikalien



Zellkultur & Verbrauchsmaterial



Diagnostik & molekulare Diagnostik



Laborgeräte & Service

Weitere Information auf den folgenden Seiten!
See the following pages for more information!



Lieferung & Zahlungsart

siehe unsere [Liefer- und Versandbedingungen](#)

Zuschläge

- Mindermengenzuschlag
- Trockeneiszuschlag
- Gefahrgutzuschlag
- Expressversand

SZABO-SCANDIC HandelsgmbH

Quellenstraße 110, A-1100 Wien

T. +43(0)1 489 3961-0

F. +43(0)1 489 3961-7

mail@szabo-scandic.com

www.szabo-scandic.com

[linkedin.com/company/szaboscandic](https://www.linkedin.com/company/szaboscandic) 

Annexin V antibody

Cat No. GTX03658

Host	Rabbit
Clonality	Polyclonal
Isotype	IgG
Application	WB, ICC/IF, IHC-P
Reactivity	Human, Mouse, Rat

Package
100 µg

APPLICATION

Application Note

*Optimal dilutions/concentrations should be determined by the researcher.

Suggested dilution	Dilution
WB	0.1-0.5µg/ml
ICC/IF	0.5-1µg/ml
IHC-P	0.5-1µg/ml

Note : Antigen retrieval by heat

Not tested in other applications.

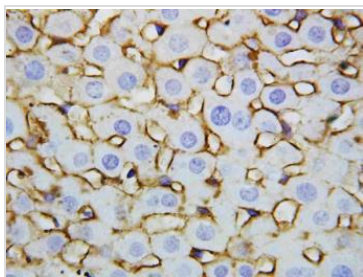
PROPERTIES

Form	Liquid
Buffer	0.2mg Na ₂ HPO ₄ , 0.9mg NaCl, 5mg BSA
Preservative	0.05mg sodium azide, 0.05mg Thimerosal
Storage	Store as concentrated solution. Centrifuge briefly prior to opening vial. For short-term storage (1-2 weeks), store at 4°C. For long-term storage, aliquot and store at -20°C or below. Avoid multiple freeze-thaw cycles.
Concentration	0.5 mg/ml (Please refer to the vial label for the specific concentration.)
Immunogen	A synthetic peptide corresponding to a sequence in the middle region of human Annexin V (88-102aa SRLYDAYELKHALKG), identical to the related rat and mouse sequences.
Purification	Purified IgG
Conjugation	Unconjugated
Note	For laboratory use only. Not for any clinical, therapeutic, or diagnostic use in humans or animals. Not for animal or human consumption.

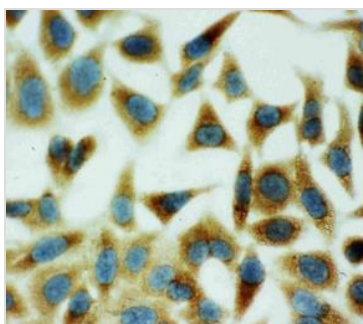


For full product information, images and publications, please visit our [website](#).

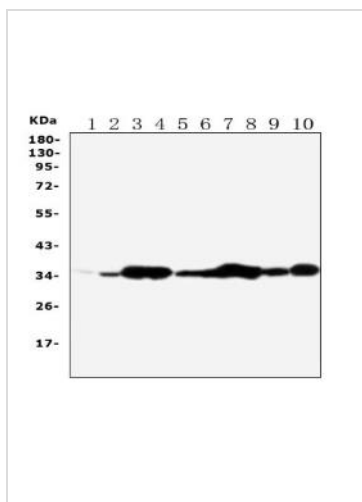
DATA IMAGES

**GTX03658 IHC-P Image**

IHC-P analysis of rat liver tissue using GTX03658 Annexin V antibody.

**GTX03658 ICC/IF Image**

ICC/IF analysis of HeLa cells using GTX03658 Annexin V antibody.

**GTX03658 WB Image**

WB analysis of various sample lysates using GTX03658 Annexin V antibody.

Lane 1 : Rat Brain Tissue Lysate at 50ug

Lane 2 : Rat Skeletal Muscle Tissue Lysate at 50ug

Lane 3 : Rat Ovary Tissue Lysate at 50ug

Lane 4 : Rat Lung Tissue Lysate at 50ug

Lane 5 : MCF-7 Whole Cell Lysate at 40ug

Lane 6 : SMMC Whole Cell Lysate at 40ug

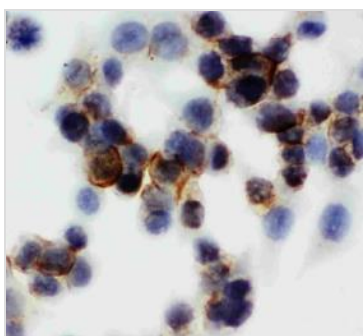
Lane 7 : A549 Whole Cell Lysate at 40ug

Lane 8 : JURKAT Whole Cell Lysate at 40ug

Lane 9 : SGC Whole Cell Lysate at 40ug

Lane 10 : HT1080 Whole Cell Lysate at 40ug

Dilution : 0.5ug/ml

**GTX03658 ICC/IF Image**

ICC/IF analysis of HCT116 cells using GTX03658 Annexin V antibody.



For full product information, images and publications, please visit our [website](#).