



# SZABO SCANDIC

Part of Europa Biosite

## Produktinformation



Forschungsprodukte & Biochemikalien



Zellkultur & Verbrauchsmaterial



Diagnostik & molekulare Diagnostik



Laborgeräte & Service

Weitere Information auf den folgenden Seiten!  
See the following pages for more information!



### Lieferung & Zahlungsart

siehe unsere [Liefer- und Versandbedingungen](#)

### Zuschläge

- Mindermengenzuschlag
- Trockeneiszuschlag
- Gefahrgutzuschlag
- Expressversand

### SZABO-SCANDIC HandelsgmbH

Quellenstraße 110, A-1100 Wien

T. +43(0)1 489 3961-0

F. +43(0)1 489 3961-7

[mail@szabo-scandic.com](mailto:mail@szabo-scandic.com)

[www.szabo-scandic.com](http://www.szabo-scandic.com)

[linkedin.com/company/szaboscandic](https://www.linkedin.com/company/szaboscandic) 

## Gasdermin C antibody

**Cat No. GTX03667**

<b>Host</b>	Rabbit
<b>Clonality</b>	Polyclonal
<b>Isotype</b>	IgG
<b>Application</b>	WB, ICC/IF, IHC-P
<b>Reactivity</b>	Human, Mouse, Rat

**Package**  
100 µl

## APPLICATION

**Application Note**

\*Optimal dilutions/concentrations should be determined by the researcher.

Suggested dilution	Dilution
WB	1:500-1:1000
ICC/IF	1:100-1:500
IHC-P	1:50-1:200

Not tested in other applications.

**Calculated MW** 58 kDa. ([Note](#))

**Product Note** We do not recommend use of this product for Sheep,Bovine samples.

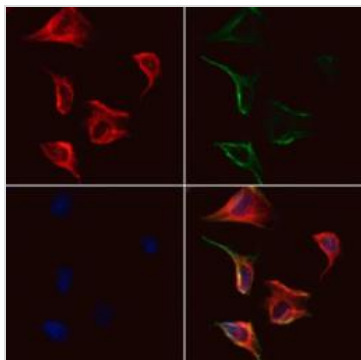
## PROPERTIES

<b>Form</b>	Liquid
<b>Buffer</b>	PBS pH 7.4, 150mM NaCl, 50% glycerol
<b>Preservative</b>	0.02% sodium azide
<b>Storage</b>	Store as concentrated solution. Centrifuge briefly prior to opening vial. For short-term storage (1-2 weeks), store at 4°C. For long-term storage, aliquot and store at -20°C or below. Avoid multiple freeze-thaw cycles.
<b>Concentration</b>	1 mg/ml (Please refer to the vial label for the specific concentration.)
<b>Immunogen</b>	A synthesized peptide derived from human GSDMC(Accession Q9BYG8), corresponding to amino acid residues Q120-F144.
<b>Purification</b>	Purified by antigen-affinity chromatography From serum
<b>Conjugation</b>	Unconjugated
<b>Note</b>	For laboratory use only. Not for any clinical, therapeutic, or diagnostic use in humans or animals. Not for animal or human consumption.



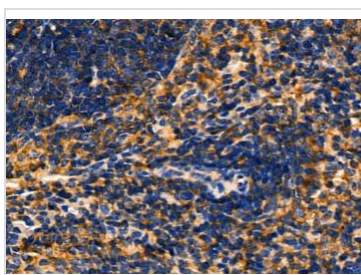
For full product information, images and publications, please visit our [website](#).

## DATA IMAGES

**GTX03667 ICC/IF Image**

ICC/IF analysis of HeLa cells using GTX03667 Gasdermin C antibody.

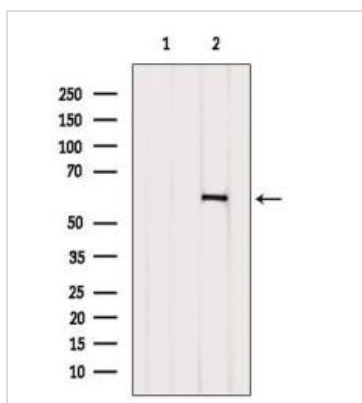
Green : Primary antibody

**GTX03667 IHC-P Image**

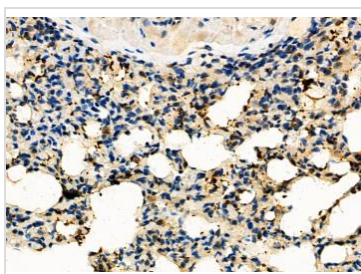
IHC-P analysis of mouse spleen tissue using GTX03667 Gasdermin C antibody.

Antigen retrieval : Heat mediated antigen retrieval step in citrate buffer was performed

Dilution : 1:100

**GTX03667 WB Image**

WB analysis of HepG2 lysates using GTX03667 Gasdermin C antibody. The lane on the left was treated with blocking peptide.

**GTX03667 IHC-P Image**

IHC-P analysis of rat lung tissue using GTX03667 Gasdermin C antibody.

Antigen retrieval : Heat mediated antigen retrieval step in citrate buffer was performed

Dilution : 1:100



For full product information, images and publications, please visit our [website](#).