



SZABO SCANDIC

Part of Europa Biosite

Produktinformation



Forschungsprodukte & Biochemikalien



Zellkultur & Verbrauchsmaterial



Diagnostik & molekulare Diagnostik



Laborgeräte & Service

Weitere Information auf den folgenden Seiten!
See the following pages for more information!



Lieferung & Zahlungsart

siehe unsere [Liefer- und Versandbedingungen](#)

Zuschläge

- Mindermengenzuschlag
- Trockeneiszuschlag
- Gefahrgutzuschlag
- Expressversand

SZABO-SCANDIC HandelsgmbH

Quellenstraße 110, A-1100 Wien

T. +43(0)1 489 3961-0

F. +43(0)1 489 3961-7

mail@szabo-scandic.com

www.szabo-scandic.com

[linkedin.com/company/szaboscandic](https://www.linkedin.com/company/szaboscandic) 

Rab11A antibody [4H9]

Cat No. GTX03669

Host	Mouse
Clonality	Monoclonal
Isotype	IgG2b
Application	WB, ICC/IF, IHC-P, FACS
Reactivity	Human, Mouse, Rat

Package
100 µg

APPLICATION

Application Note

*Optimal dilutions/concentrations should be determined by the researcher.

Suggested dilution	Dilution
WB	0.25-0.5 µg/ml
ICC/IF	5 µg/ml
IHC-P	2-5 µg/ml
FACS	1-3 µg/1x10 ⁶ cells

Not tested in other applications.

Calculated MW 24 kDa. ([Note](#))

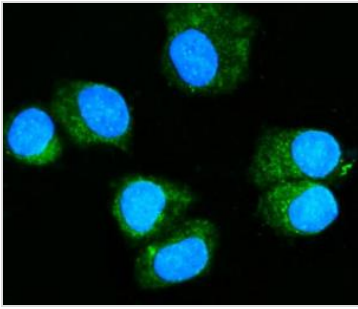
PROPERTIES

Form	Liquid
Buffer	4mg Trehalose, 0.9mg NaCl, 0.2mg Na ₂ HPO ₄
Preservative	No preservative
Storage	Store as concentrated solution. Centrifuge briefly prior to opening vial. For short-term storage (1-2 weeks), store at 4°C. For long-term storage, aliquot and store at -20°C or below. Avoid multiple freeze-thaw cycles.
Concentration	0.5 mg/ml (Please refer to the vial label for the specific concentration.)
Immunogen	A synthetic peptide corresponding to a sequence at the C-terminus of human Rab11A (171-211aa EIYRIVSQKQMSDRRENDMSPSNVPIHVPPPTTENKPKVQ), identical to the related mouse and rat sequences.
Purification	Purified by antigen-affinity chromatography
Conjugation	Unconjugated
Note	For laboratory use only. Not for any clinical, therapeutic, or diagnostic use in humans or animals. Not for animal or human consumption.



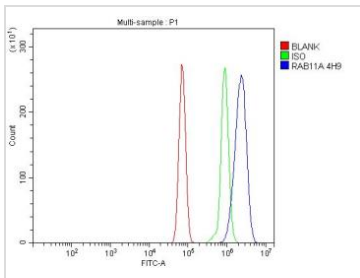
For full product information, images and publications, please visit our [website](#).

DATA IMAGES

**GTX03669 ICC/IF Image**

ICC/IF analysis of T-47D cells using GTX03669 Rab11A antibody [4H9]. Enzyme antigen retrieval was performed using IHC enzyme antigen retrieval reagent for 15 mins.

Dilution : 5 µg/mL

**GTX03669 FACS Image**

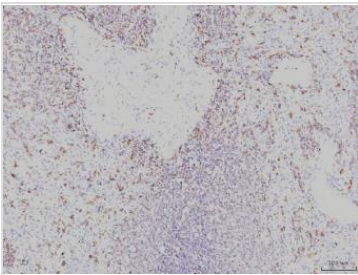
FACS analysis of RH35 cells using GTX03669 Rab11A antibody [4H9].

Antibody amount : 1 µg / 1x10⁶ cells

Blue : Primary antibody

Green : Isotype control

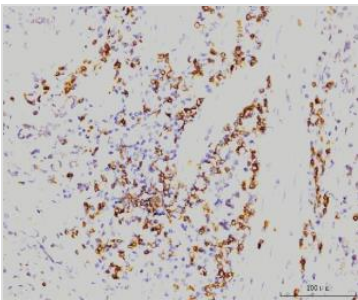
Red : Unlabelled sample

**GTX03669 IHC-P Image**

IHC-P analysis of human spleen tissue using GTX03669 Rab11A antibody [4H9].

Antigen retrieval : Heat mediated antigen retrieval was performed in EDTA buffer (pH 8.0, epitope retrieval solution)

Dilution : 2 µg/ml

**GTX03669 IHC-P Image**

IHC-P analysis of human gastric carcinoma tissue using GTX03669 Rab11A antibody [4H9].

Antigen retrieval : Heat mediated antigen retrieval was performed in EDTA buffer (pH 8.0, epitope retrieval solution)

Dilution : 2 µg/ml



For full product information, images and publications, please visit our [website](#).