



# SZABO SCANDIC

Part of Europa Biosite

## Produktinformation



Forschungsprodukte & Biochemikalien



Zellkultur & Verbrauchsmaterial



Diagnostik & molekulare Diagnostik



Laborgeräte & Service

Weitere Information auf den folgenden Seiten!  
See the following pages for more information!



### Lieferung & Zahlungsart

siehe unsere [Liefer- und Versandbedingungen](#)

### Zuschläge

- Mindermengenzuschlag
- Trockeneiszuschlag
- Gefahrgutzuschlag
- Expressversand

### SZABO-SCANDIC HandelsgmbH

Quellenstraße 110, A-1100 Wien

T. +43(0)1 489 3961-0

F. +43(0)1 489 3961-7

[mail@szabo-scandic.com](mailto:mail@szabo-scandic.com)

[www.szabo-scandic.com](http://www.szabo-scandic.com)

[linkedin.com/company/szaboscandic](https://www.linkedin.com/company/szaboscandic) 

## MMP8 antibody

**Cat No. GTX03673**

<b>Host</b>	Rabbit
<b>Clonality</b>	Polyclonal
<b>Isotype</b>	IgG
<b>Application</b>	WB, IHC-P, ELISA
<b>Reactivity</b>	Mouse, Rat

**Package**  
100 µg

## APPLICATION

**Application Note**

\*Optimal dilutions/concentrations should be determined by the researcher.

Suggested dilution	Dilution
WB	0.1-0.5µg/ml
IHC-P	0.5-1µg/m
ELISA	0.1-0.5µg/ml

**Note : Antigen retrieval by heat**

Not tested in other applications.

**Calculated MW** 53 kDa. ([Note](#))

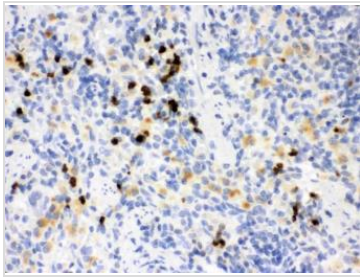
## PROPERTIES

<b>Form</b>	Liquid
<b>Buffer</b>	0.9 mg NaCl, 0.2 mg Na <sub>2</sub> HPO <sub>4</sub> , 5mg BSA
<b>Preservative</b>	0.05mg sodium azide
<b>Storage</b>	Store as concentrated solution. Centrifuge briefly prior to opening vial. For short-term storage (1-2 weeks), store at 4°C. For long-term storage, aliquot and store at -20°C or below. Avoid multiple freeze-thaw cycles.
<b>Concentration</b>	0.5 mg/ml (Please refer to the vial label for the specific concentration.)
<b>Immunogen</b>	A synthetic peptide corresponding to a sequence at the N-terminus of mouse MMP-8 (120-157aa HTPQLSRAEVKTAIEKAFHVWSVASPLTFTEILQGEAD), different from the related human sequence by eleven amino acids, and from the related rat sequence by nine amino acids.
<b>Purification</b>	Purified by antigen-affinity chromatography
<b>Conjugation</b>	Unconjugated
<b>Note</b>	For laboratory use only. Not for any clinical, therapeutic, or diagnostic use in humans or animals. Not for animal or human consumption.



For full product information, images and publications, please visit our [website](#).

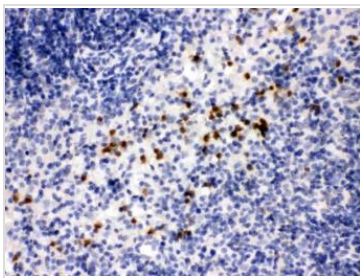
## DATA IMAGES

**GTX03673 IHC-P Image**

IHC-P analysis of rat spleen tissue using GTX03673 MMP8 antibody.

Antigen retrieval : Heat mediated antigen retrieval was performed in EDTA buffer (pH 8.0, epitope retrieval solution)

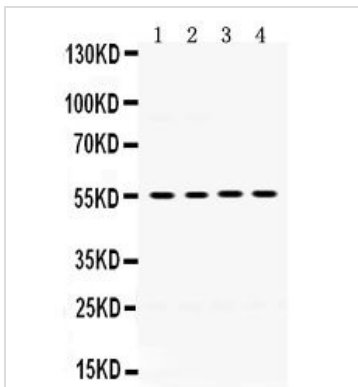
Dilution : 1 µg/ml

**GTX03673 IHC-P Image**

IHC-P analysis of mouse spleen tissue using GTX03673 MMP8 antibody.

Antigen retrieval : Heat mediated antigen retrieval was performed in EDTA buffer (pH 8.0, epitope retrieval solution)

Dilution : 1 µg/ml

**GTX03673 WB Image**

WB analysis of various sample lysates using GTX03673 MMP8 antibody.

Lane 1 : Mouse testis tissue lysate (50µg)

Lane 2 : NIH3T3 whole cell lysate (40µg)

Lane 3 : Hepa whole cell lysate (40µg)

Lane 4 : NRK whole cell lysate (40µg)

Dilution : 0.5 µg/ml



For full product information, images and publications, please visit our [website](#).