



SZABO SCANDIC

Part of Europa Biosite

Produktinformation



Forschungsprodukte & Biochemikalien



Zellkultur & Verbrauchsmaterial



Diagnostik & molekulare Diagnostik



Laborgeräte & Service

Weitere Information auf den folgenden Seiten!
See the following pages for more information!



Lieferung & Zahlungsart

siehe unsere [Liefer- und Versandbedingungen](#)

Zuschläge

- Mindermengenzuschlag
- Trockeneiszuschlag
- Gefahrgutzuschlag
- Expressversand

SZABO-SCANDIC HandelsgmbH

Quellenstraße 110, A-1100 Wien

T. +43(0)1 489 3961-0

F. +43(0)1 489 3961-7

mail@szabo-scandic.com

www.szabo-scandic.com

[linkedin.com/company/szaboscandic](https://www.linkedin.com/company/szaboscandic) 

RIP (phospho Tyr384) antibody

Cat No. GTX03682

Host	Rabbit
Clonality	Polyclonal
Isotype	IgG
Application	WB, IHC-P, ELISA
Reactivity	Human, Mouse

Package
100 µl

APPLICATION

Application Note

*Optimal dilutions/concentrations should be determined by the researcher.

Suggested dilution	Dilution
WB	1:500-1:2000
IHC-P	1:50-1:200
ELISA	Assay dependent

Not tested in other applications.

Observed MW 76 kDa.

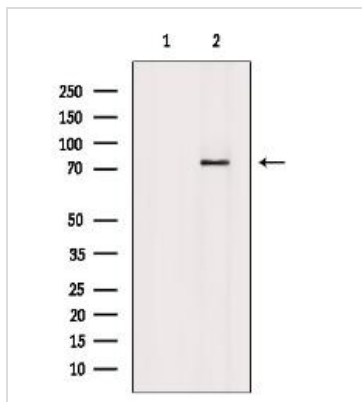
PROPERTIES

Form	Liquid
Buffer	PBS, pH 7.4, 150mM NaCl, 50% glycerol
Preservative	0.02% sodium azide
Storage	Store as concentrated solution. Centrifuge briefly prior to opening vial. For short-term storage (1-2 weeks), store at 4°C. For long-term storage, aliquot and store at -20°C or below. Avoid multiple freeze-thaw cycles.
Concentration	1 mg/ml (Please refer to the vial label for the specific concentration.)
Immunogen	A synthesized peptide derived from human RIPK1 (Accession Q13546), corresponding to amino acid residues E371-T395.
Purification	Purified by antigen-affinity chromatography From serum
Conjugation	Unconjugated
Note	For laboratory use only. Not for any clinical, therapeutic, or diagnostic use in humans or animals. Not for animal or human consumption.



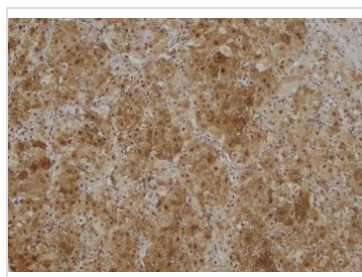
For full product information, images and publications, please visit our [website](#).

DATA IMAGES



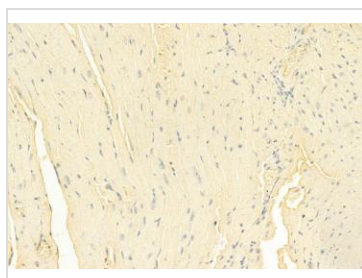
GTX03682 WB Image

WB analysis of 293 lysates using GTX03682 RIP (phospho Tyr384) antibody. Lane 1 was treated with the blocking peptide.



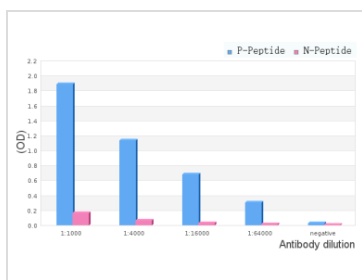
GTX03682 IHC-P Image

IHC-P analysis of human liver tissue using GTX03682 RIP (phospho Tyr384) antibody.
Dilution : 1:100
Antigen retrieval : Heat mediated citrate buffer



GTX03682 IHC-P Image

IHC-P analysis of mouse heart tissue using GTX03682 RIP (phospho Tyr384) antibody.
Dilution : 1:100
Antigen retrieval : Heat mediated citrate buffer



GTX03682 ELISA Image

ELISA analysis of phospho- and non phospho- immunogen peptide using GTX03682 RIP (phospho Tyr384) antibody.
P-peptide : phospho-peptide
N-peptide : non-phospho-peptide
Peptides concentration : 1µg/ml



For full product information, images and publications, please visit our [website](#).