



SZABO SCANDIC

Part of Europa Biosite

Produktinformation



Forschungsprodukte & Biochemikalien



Zellkultur & Verbrauchsmaterial



Diagnostik & molekulare Diagnostik



Laborgeräte & Service

Weitere Information auf den folgenden Seiten!
See the following pages for more information!



Lieferung & Zahlungsart

siehe unsere [Liefer- und Versandbedingungen](#)

Zuschläge

- Mindermengenzuschlag
- Trockeneiszuschlag
- Gefahrgutzuschlag
- Expressversand

SZABO-SCANDIC HandelsgmbH

Quellenstraße 110, A-1100 Wien

T. +43(0)1 489 3961-0

F. +43(0)1 489 3961-7

mail@szabo-scandic.com

www.szabo-scandic.com

[linkedin.com/company/szaboscandic](https://www.linkedin.com/company/szaboscandic) 

ARRDC1 antibody

Cat. No. GTX03690

Host	Rabbit
Clonality	Polyclonal
Isotype	IgG
Application	WB, IHC-P
Reactivity	Human, Mouse

Package
100 µl

APPLICATION

Application Note

*Optimal dilutions/concentrations should be determined by the researcher.

Suggested dilution	Recommended dilution
WB	1:1000
IHC-P	1:50-1:200

Not tested in other applications.

Calculated MW 46 kDa. ([Note](#))

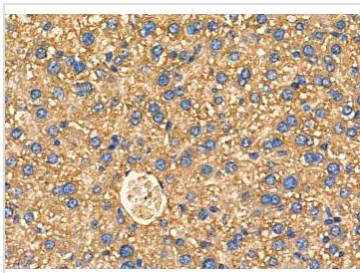
PROPERTIES

Form	Liquid
Buffer	PBS, pH 7.4, 150mM NaCl, 50% glycerol
Preservative	0.02% sodium azide
Storage	Store as concentrated solution. Centrifuge briefly prior to opening vial. For short-term storage (1-2 weeks), store at 4°C. For long-term storage, aliquot and store at -20°C or below. Avoid multiple freeze-thaw cycles.
Concentration	1 mg/ml (Please refer to the vial label for the specific concentration.)
Immunogen	A synthesized peptide derived from human ARRDC1(Accession Q8N5I2), corresponding to amino acid residues L401-V425.
Purification	Purified by antigen-affinity chromatography From serum
Conjugation	Unconjugated
Note	For laboratory use only. Not for any clinical, therapeutic, or diagnostic use in humans or animals. Not for animal or human consumption.



For full product information, images and publications, please visit our [website](#).

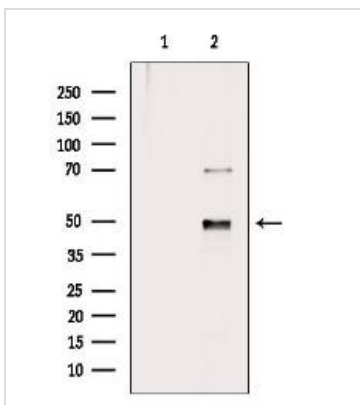
DATA IMAGES

**GTX03690 IHC-P Image**

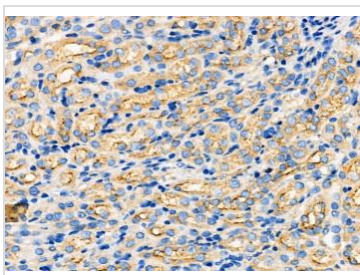
IHC-P analysis of mouse liver cancer tissue using GTX03690 ARRDC1 antibody.

Dilution : 1:100

Antigen retrieval : Heat mediated antigen retrieval step in citrate buffer was performed

**GTX03690 WB Image**

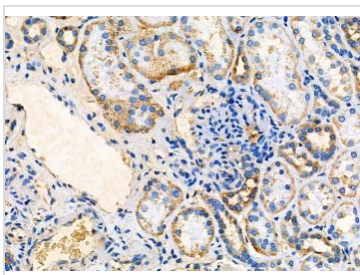
WB analysis of HeLa cell lysates using GTX03690 ARRDC1 antibody. The lane on the left was treated with blocking peptide.

**GTX03690 IHC-P Image**

IHC-P analysis of mouse kidney cancer tissue using GTX03690 ARRDC1 antibody.

Dilution : 1:100

Antigen retrieval : Heat mediated antigen retrieval step in citrate buffer was performed

**GTX03690 IHC-P Image**

IHC-P analysis of human kidney cancer tissue using GTX03690 ARRDC1 antibody.

Dilution : 1:100

Antigen retrieval : Heat mediated antigen retrieval step in citrate buffer was performed



For full product information, images and publications, please visit our [website](#).