



SZABO SCANDIC

Part of Europa Biosite

Produktinformation



Forschungsprodukte & Biochemikalien



Zellkultur & Verbrauchsmaterial



Diagnostik & molekulare Diagnostik



Laborgeräte & Service

Weitere Information auf den folgenden Seiten!
See the following pages for more information!



Lieferung & Zahlungsart

siehe unsere [Liefer- und Versandbedingungen](#)

Zuschläge

- Mindermengenzuschlag
- Trockeneiszuschlag
- Gefahrgutzuschlag
- Expressversand

SZABO-SCANDIC HandelsgmbH

Quellenstraße 110, A-1100 Wien

T. +43(0)1 489 3961-0

F. +43(0)1 489 3961-7

mail@szabo-scandic.com

www.szabo-scandic.com

[linkedin.com/company/szaboscandic](https://www.linkedin.com/company/szaboscandic) 

Prothrombin antibody

Cat. No. GTX03694

Host	Rabbit
Clonality	Polyclonal
Isotype	IgG
Application	WB, ICC/IF, IHC-P, IHC-Fr, FACS, ELISA
Reactivity	Human

Package
100 µg

APPLICATION

Application Note

*Optimal dilutions/concentrations should be determined by the researcher.

Suggested dilution	Recommended dilution
WB	0.1-0.5µg/ml
ICC/IF	0.5-1µg/ml
IHC-P	0.5-1µg/ml
IHC-Fr	0.5-1µg/ml
FACS	1-3µg/1x10 ⁶ cells
ELISA	0.1-0.5µg/ml

Not tested in other applications.

Calculated MW 70 kDa. ([Note](#))

PROPERTIES

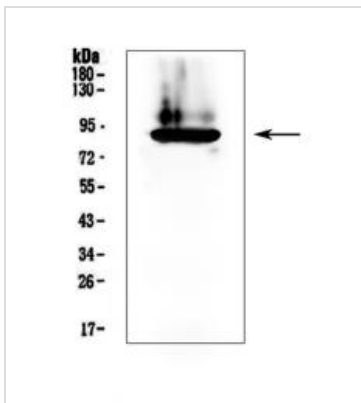
Form	Liquid
Buffer	4mg Trehalose, 0.9mg NaCl, 0.2mg Na ₂ HPO ₄
Preservative	0.05mg sodium azide
Storage	Store as concentrated solution. Centrifuge briefly prior to opening vial. For short-term storage (1-2 weeks), store at 4°C. For long-term storage, aliquot and store at -20°C or below. Avoid multiple freeze-thaw cycles.
Concentration	0.5 mg/ml (Please refer to the vial label for the specific concentration.)
Immunogen	E. coli-derived human Prothrombin recombinant protein (Position: Y67-R124).
Purification	Purified by antigen-affinity chromatography
Conjugation	Unconjugated



For full product information, images and publications, please visit our [website](#).

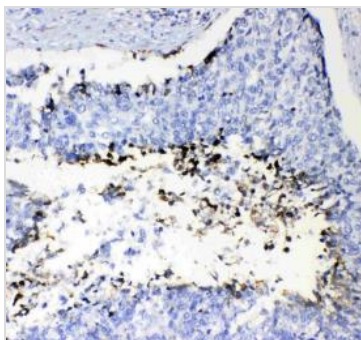
Note For laboratory use only. Not for any clinical, therapeutic, or diagnostic use in humans or animals. Not for animal or human consumption.

DATA IMAGES



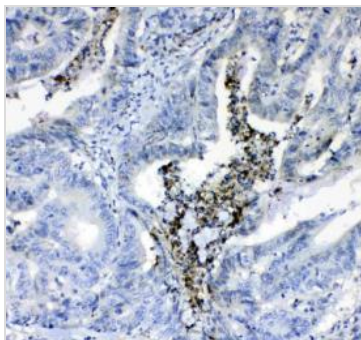
GTX03694 WB Image

WB analysis of human plasma lysate using GTX03694 Prothrombin antibody.
 Dilution : 0.5 µg/ml
 Loading: 50 µg per lane



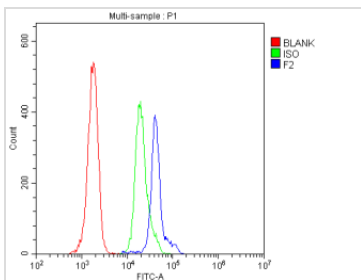
GTX03694 IHC-P Image

IHC-P analysis of human lung cancer tissue using GTX03694 Prothrombin antibody.
 Dilution : 1 µg/ml
 Antigen retrieval : Heat mediated antigen retrieval was performed in citrate buffer (pH6, epitope retrieval solution) for 20 mins



GTX03694 IHC-P Image

IHC-P analysis of human colon cancer tissue using GTX03694 Prothrombin antibody.
 Dilution : 1 µg/ml
 Antigen retrieval : Heat mediated antigen retrieval was performed in citrate buffer (pH6, epitope retrieval solution) for 20 mins



GTX03694 FACS Image

FACS analysis of human PBMC cells using GTX03694 Prothrombin antibody.
 Blue : Primary antibody
 Green : Isotype control
 Red : Unlabelled sample
 Antibody amount : 1 µg/1x10⁶ cells



For full product information, images and publications, please visit our [website](#).