



SZABO SCANDIC

Part of Europa Biosite

Produktinformation



Forschungsprodukte & Biochemikalien



Zellkultur & Verbrauchsmaterial



Diagnostik & molekulare Diagnostik



Laborgeräte & Service

Weitere Information auf den folgenden Seiten!
See the following pages for more information!



Lieferung & Zahlungsart

siehe unsere [Liefer- und Versandbedingungen](#)

Zuschläge

- Mindermengenzuschlag
- Trockeneiszuschlag
- Gefahrgutzuschlag
- Expressversand

SZABO-SCANDIC HandelsgmbH

Quellenstraße 110, A-1100 Wien

T. +43(0)1 489 3961-0

F. +43(0)1 489 3961-7

mail@szabo-scandic.com

www.szabo-scandic.com

[linkedin.com/company/szaboscandic](https://www.linkedin.com/company/szaboscandic) 

Lamin B1 antibody

Cat. No. GTX03695

Host	Rabbit
Clonality	Polyclonal
Isotype	IgG
Application	WB, ICC/IF, IHC-P, IHC-Fr, FACS
Reactivity	Human, Mouse, Rat

Package
100 µg

APPLICATION

Application Note

*Optimal dilutions/concentrations should be determined by the researcher.

Suggested dilution	Recommended dilution
WB	0.1-0.5µg/ml
ICC/IF	2µg/ml
IHC-P	0.5-1µg/ml
IHC-Fr	0.5-1µg/ml
FACS	1-3µg/1x10 ⁶ cells

Note : By Heat

Not tested in other applications.

Calculated MW 66 kDa. ([Note](#))

PROPERTIES

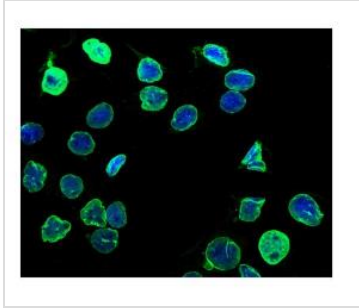
Form	Liquid
Buffer	5mg BSA, 0.9mg NaCl, 0.2mg Na ₂ HPO ₄
Preservative	0.05mg sodium azide
Storage	Store as concentrated solution. Centrifuge briefly prior to opening vial. For short-term storage (1-2 weeks), store at 4°C. For long-term storage, aliquot and store at -20°C or below. Avoid multiple freeze-thaw cycles.
Concentration	0.5 mg/ml (Please refer to the vial label for the specific concentration.)
Immunogen	E.coli-derived human Lamin B1 recombinant protein (Position: Q266-C583).
Purification	Purified by antigen-affinity chromatography
Conjugation	Unconjugated



For full product information, images and publications, please visit our [website](#).

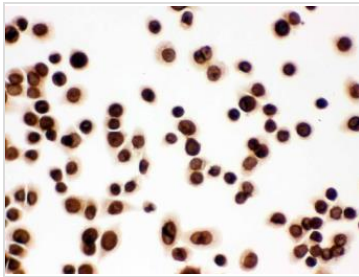
Note For laboratory use only. Not for any clinical, therapeutic, or diagnostic use in humans or animals. Not for animal or human consumption.

DATA IMAGES

**GTX03695 ICC/IF Image**

ICC/IF analysis of U2OS cells using GTX03695 Lamin B1 antibody. Enzyme antigen retrieval was performed using IHC enzyme antigen retrieval reagent for 15 mins.

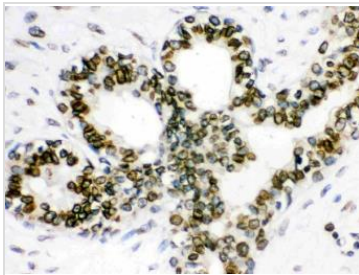
Dilution : 2 µg/mL

**GTX03695 ICC/IF Image**

ICC/IF analysis of SW480 cells using GTX03695 Lamin B1 antibody.

Dilution : 1 µg/ml

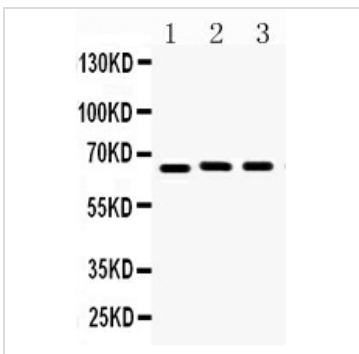
Antigen retrieval : Enzyme antigen retrieval reagent

**GTX03695 IHC-P Image**

IHC-P analysis of human mammary cancer tissue using GTX03695 Lamin B1 antibody.

Dilution : 1 µg/ml

Antigen retrieval : Heat mediated antigen retrieval was performed in citrate buffer (pH6, epitope retrieval solution) for 20 mins

**GTX03695 WB Image**

WB analysis of various cell lysates using GTX03695 Lamin B1 antibody.

Lane 1 : U87 cell lysate

Lane 2 : PC-12 cell lysate

Lane 3 : NIH-3T3

Dilution: 0.5 µg/mL

Loading: 50 µg per lane



For full product information, images and publications, please visit our [website](#).