



SZABO SCANDIC

Part of Europa Biosite

Produktinformation



Forschungsprodukte & Biochemikalien



Zellkultur & Verbrauchsmaterial



Diagnostik & molekulare Diagnostik



Laborgeräte & Service

Weitere Information auf den folgenden Seiten!
See the following pages for more information!



Lieferung & Zahlungsart

siehe unsere [Liefer- und Versandbedingungen](#)

Zuschläge

- Mindermengenzuschlag
- Trockeneiszuschlag
- Gefahrgutzuschlag
- Expressversand

SZABO-SCANDIC HandelsgmbH

Quellenstraße 110, A-1100 Wien

T. +43(0)1 489 3961-0

F. +43(0)1 489 3961-7

mail@szabo-scandic.com

www.szabo-scandic.com

[linkedin.com/company/szaboscandic](https://www.linkedin.com/company/szaboscandic) 

SGK1 antibody

Cat. No. GTX03696

Host	Rabbit
Clonality	Polyclonal
Isotype	IgG
Application	WB, ICC/IF, IHC-P, FACS
Reactivity	Human, Monkey

Package
100 µg

APPLICATION

Application Note

*Optimal dilutions/concentrations should be determined by the researcher.

Suggested dilution	Recommended dilution
WB	0.25-0.5µg/ml
ICC/IF	2µg/ml
IHC-P	0.5-1µg/ml
FACS	1-3µg/1x10 ⁶ cells

Not tested in other applications.

Calculated MW 49 kDa. ([Note](#))

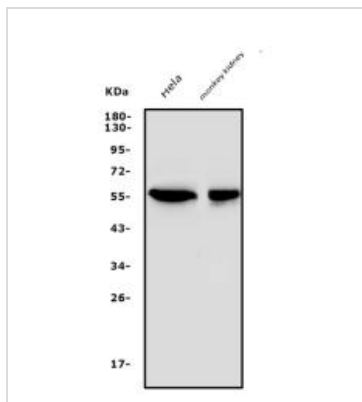
PROPERTIES

Form	Liquid
Buffer	4mg Trehalose, 0.9mg NaCl, 0.2mg Na ₂ HPO ₄
Preservative	0.05mg sodium azide
Storage	Store as concentrated solution. Centrifuge briefly prior to opening vial. For short-term storage (1-2 weeks), store at 4°C. For long-term storage, aliquot and store at -20°C or below. Avoid multiple freeze-thaw cycles.
Concentration	0.5 mg/ml (Please refer to the vial label for the specific concentration.)
Immunogen	A synthetic peptide corresponding to a sequence of human SGK1 (AIIAFMKQRRMGLNDFIQKIAN).
Purification	Purified by antigen-affinity chromatography
Conjugation	Unconjugated
Note	For laboratory use only. Not for any clinical, therapeutic, or diagnostic use in humans or animals. Not for animal or human consumption.



For full product information, images and publications, please visit our [website](#).

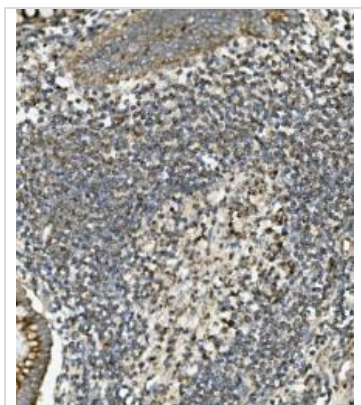
DATA IMAGES

**GTX03696 WB Image**

WB analysis of various cell lysates using GTX03696 SGK1 antibody.

Dilution : 0.5 µg/mL

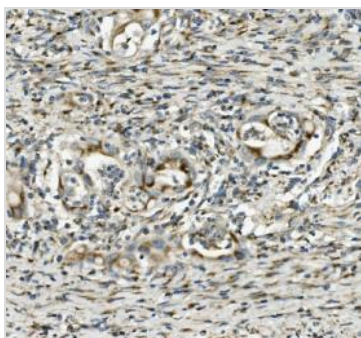
Loading : 50 µg per lane

**GTX03696 IHC-P Image**

IHC-P analysis of human rectal cancer tissue using GTX03696 SGK1 antibody.

Dilution : 1 µg/ml

Antigen retrieval : Heat mediated antigen retrieval was performed in EDTA buffer (pH8.0, epitope retrieval solution)

**GTX03696 IHC-P Image**

IHC-P analysis of human rectal cancer tissue using GTX03696 SGK1 antibody.

Dilution : 1 µg/ml

Antigen retrieval : Heat mediated antigen retrieval was performed in EDTA buffer (pH8.0, epitope retrieval solution)



For full product information, images and publications, please visit our [website](#).