



# SZABO SCANDIC

Part of Europa Biosite

## Produktinformation



Forschungsprodukte & Biochemikalien



Zellkultur & Verbrauchsmaterial



Diagnostik & molekulare Diagnostik



Laborgeräte & Service

Weitere Information auf den folgenden Seiten!  
See the following pages for more information!



### Lieferung & Zahlungsart

siehe unsere [Liefer- und Versandbedingungen](#)

### Zuschläge

- Mindermengenzuschlag
- Trockeneiszuschlag
- Gefahrgutzuschlag
- Expressversand

### SZABO-SCANDIC HandelsgmbH

Quellenstraße 110, A-1100 Wien

T. +43(0)1 489 3961-0

F. +43(0)1 489 3961-7

[mail@szabo-scandic.com](mailto:mail@szabo-scandic.com)

[www.szabo-scandic.com](http://www.szabo-scandic.com)

[linkedin.com/company/szaboscandic](https://www.linkedin.com/company/szaboscandic) 

## ATP7b antibody [S62-29]

**Cat. No. GTX03698**

<b>Host</b>	Mouse
<b>Clonality</b>	Monoclonal
<b>Isotype</b>	IgG1
<b>Application</b>	WB, ICC/IF, IP, IHC
<b>Reactivity</b>	Human, Mouse, Rat

**Package**  
100 µg

## APPLICATION

**Application Note**

\*Optimal dilutions/concentrations should be determined by the researcher.

Suggested dilution	Recommended dilution
WB	1:1000
ICC/IF	1:100
IP	Assay dependent
IHC	Assay dependent

Not tested in other applications.

**Calculated MW** 157 kDa. ([Note](#))

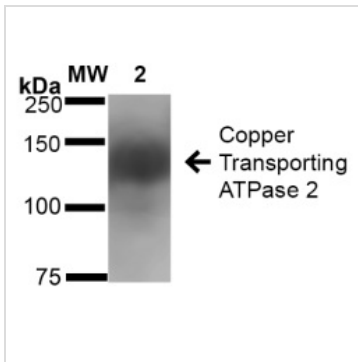
## PROPERTIES

<b>Form</b>	Liquid
<b>Buffer</b>	PBS pH7.4, 50% glycerol
<b>Preservative</b>	0.09% sodium azide
<b>Storage</b>	Store as concentrated solution. Centrifuge briefly prior to opening vial. For short-term storage (1-2 weeks), store at 4°C. For long-term storage, aliquot and store at -20°C or below. Avoid multiple freeze-thaw cycles.
<b>Concentration</b>	1 mg/ml (Please refer to the vial label for the specific concentration.)
<b>Immunogen</b>	Synthetic peptide amino acids 3-21 (cytoplasmic N-terminus) of human Copper-transporting ATPase2
<b>Purification</b>	Protein G purified
<b>Conjugation</b>	Unconjugated
<b>Note</b>	For laboratory use only. Not for any clinical, therapeutic, or diagnostic use in humans or animals. Not for animal or human consumption.



For full product information, images and publications, please visit our [website](#).

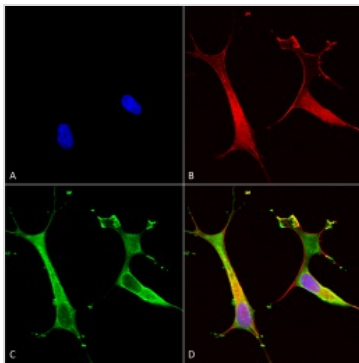
## DATA IMAGES

**GTX03698 WB Image**

WB analysis of rat brain lysate using GTX03698 ATP7b antibody [S62-29].

Dilution : 1:1000

Loading : 20 µg per lane

**GTX03698 ICC/IF Image**

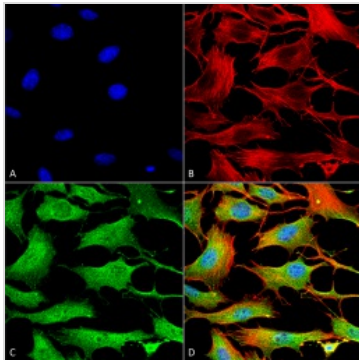
ICC/IF analysis of 4%PFA-fixed SH-SY5Y using GTX03698 ATP7b antibody [S62-29].

Green : Primary antibody

Blue : Hoechst nuclear stain

Red : F-Actin

Dilution : 1:100

**GTX03698 ICC/IF Image**

ICC/IF analysis of 4%PFA-fixed NIH-3T3 using GTX03698 ATP7b antibody [S62-29].

Green : Primary antibody

Blue : DAPI

Red : F-Actin

Dilution : 1:100



For full product information, images and publications, please visit our [website](#).