



SZABO SCANDIC

Part of Europa Biosite

Produktinformation



Forschungsprodukte & Biochemikalien



Zellkultur & Verbrauchsmaterial



Diagnostik & molekulare Diagnostik



Laborgeräte & Service

Weitere Information auf den folgenden Seiten!
See the following pages for more information!



Lieferung & Zahlungsart

siehe unsere [Liefer- und Versandbedingungen](#)

Zuschläge

- Mindermengenzuschlag
- Trockeneiszuschlag
- Gefahrgutzuschlag
- Expressversand

SZABO-SCANDIC HandelsgmbH

Quellenstraße 110, A-1100 Wien

T. +43(0)1 489 3961-0

F. +43(0)1 489 3961-7

mail@szabo-scandic.com

www.szabo-scandic.com

[linkedin.com/company/szaboscandic](https://www.linkedin.com/company/szaboscandic) 

IL31 antibody

Cat. No. GTX03704

Host	Rabbit
Clonality	Polyclonal
Isotype	IgG
Application	WB, IHC-P, ELISA
Reactivity	Human, Mouse, Rat

Package
100 µg

APPLICATION

Application Note

*Optimal dilutions/concentrations should be determined by the researcher.

Suggested dilution	Recommended dilution
WB	0.1-0.5µg/ml
IHC-P	0.5-1µg/ml
ELISA	1-5µg/ml

Note : As a capture antibody

Not tested in other applications.

Calculated MW 18 kDa. ([Note](#))

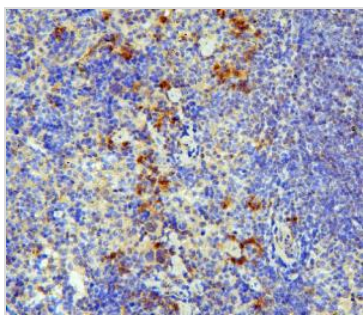
PROPERTIES

Form	Liquid
Buffer	4mg Trehalose, 0.9mg NaCl, 0.2mg Na ₂ HPO ₄
Preservative	0.05mg sodium azide
Storage	Store as concentrated solution. Centrifuge briefly prior to opening vial. For short-term storage (1-2 weeks), store at 4°C. For long-term storage, aliquot and store at -20°C or below. Avoid multiple freeze-thaw cycles.
Concentration	0.5 mg/ml (Please refer to the vial label for the specific concentration.)
Immunogen	E.coli-derived human IL-31 recombinant protein (Position: S24-T164).
Purification	Purified by antigen-affinity chromatography
Conjugation	Unconjugated
Note	For laboratory use only. Not for any clinical, therapeutic, or diagnostic use in humans or animals. Not for animal or human consumption.



For full product information, images and publications, please visit our [website](#).

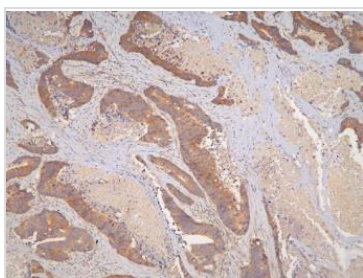
DATA IMAGES

**GTX03704 IHC-P Image**

IHC-P analysis of mouse spleen tissue using GTX03704 IL31 antibody.

Antigen retrieval : Heat mediated citrate buffer (pH6)

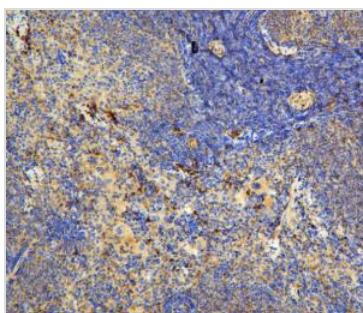
Dilution : 1 µg/ml

**GTX03704 IHC-P Image**

IHC-P analysis of human colon cancer tissue using GTX03704 IL31 antibody.

Antigen retrieval : Heat mediated citrate buffer (pH6)

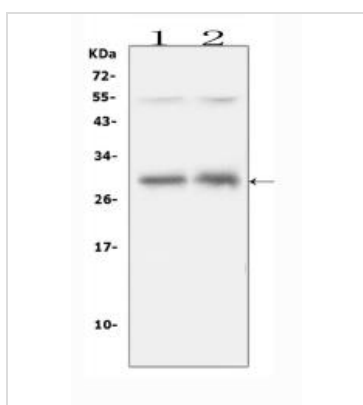
Dilution : 1 µg/ml

**GTX03704 IHC-P Image**

IHC-P analysis of rat spleen tissue using GTX03704 IL31 antibody.

Antigen retrieval : Heat mediated citrate buffer (pH6)

Dilution : 1 µg/ml

**GTX03704 WB Image**

WB analysis of various tissue lysates using GTX03704 IL31 antibody.

Lane 1 : Rat spleen

Lane 2 : Rat thymus

Dilution : 0.5 µg/ml

Loading: 50 µg per lane



For full product information, images and publications, please visit our [website](#).