



# SZABO SCANDIC

Part of Europa Biosite

## Produktinformation



Forschungsprodukte & Biochemikalien



Zellkultur & Verbrauchsmaterial



Diagnostik & molekulare Diagnostik



Laborgeräte & Service

Weitere Information auf den folgenden Seiten!  
See the following pages for more information!



### Lieferung & Zahlungsart

siehe unsere [Liefer- und Versandbedingungen](#)

### Zuschläge

- Mindermengenzuschlag
- Trockeneiszuschlag
- Gefahrgutzuschlag
- Expressversand

### SZABO-SCANDIC HandelsgmbH

Quellenstraße 110, A-1100 Wien

T. +43(0)1 489 3961-0

F. +43(0)1 489 3961-7

[mail@szabo-scandic.com](mailto:mail@szabo-scandic.com)

[www.szabo-scandic.com](http://www.szabo-scandic.com)

[linkedin.com/company/szaboscandic](https://www.linkedin.com/company/szaboscandic) 

## Gremlin 1 antibody

**Cat. No. GTX03707**

|                    |              |
|--------------------|--------------|
| <b>Host</b>        | Rabbit       |
| <b>Clonality</b>   | Polyclonal   |
| <b>Isotype</b>     | IgG          |
| <b>Application</b> | WB, IHC-P    |
| <b>Reactivity</b>  | Human, Mouse |

**Package**  
400 µl

## APPLICATION

**Application Note**

\*Optimal dilutions/concentrations should be determined by the researcher.

| Suggested dilution | Recommended dilution |
|--------------------|----------------------|
| WB                 | 1:2000               |
| IHC-P              | 1:50-1:100           |

Not tested in other applications.

**Calculated MW** 21 kDa. ([Note](#))

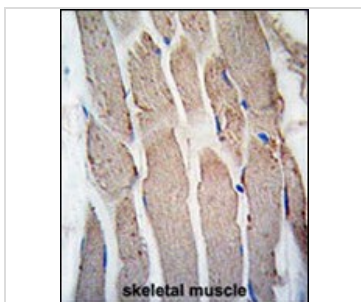
## PROPERTIES

|                      |  |
|----------------------|--|
| <b>Form</b>          | Liquid   |
| <b>Buffer</b>        | PBS  |
| <b>Preservative</b>  | 0.09% sodium azide   |
| <b>Storage</b>       | Store as concentrated solution. Centrifuge briefly prior to opening vial. For short-term storage (1-2 weeks), store at 4°C. For long-term storage, aliquot and store at -20°C or below. Avoid multiple freeze-thaw cycles. |
| <b>Concentration</b> | Batch dependent (Please refer to the vial label for the specific concentration.)   |
| <b>Immunogen</b>     | KLH conjugated synthetic peptide between 147-175 amino acids from the C-terminal region of mouse GREMLIN.  |
| <b>Purification</b>  | Protein A purified followed by antigen-affinity chromatography   |
| <b>Conjugation</b>   | Unconjugated   |
| <b>Note</b>          | For laboratory use only. Not for any clinical, therapeutic, or diagnostic use in humans or animals. Not for animal or human consumption.   |

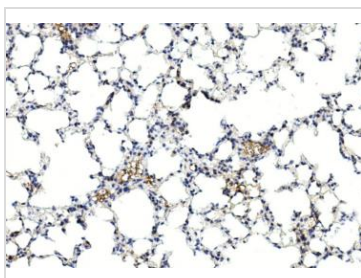


For full product information, images and publications, please visit our [website](#).

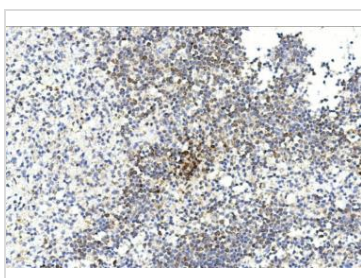
## DATA IMAGES

**GTX03707 IHC-P Image**

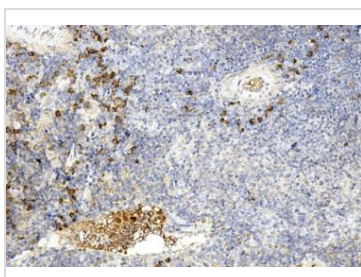
IHC-P analysis of human skeletal muscle tissue GTX03707 Gremlin 1 antibody.

**GTX03707 IHC-P Image**

IHC-P analysis of mouse lung tissue GTX03707 Gremlin 1 antibody.  
Dilution : 1:200

**GTX03707 IHC-P Image**

IHC-P analysis of human spleen tissue GTX03707 Gremlin 1 antibody.  
Dilution : 1:400

**GTX03707 IHC-P Image**

IHC-P analysis of mouse spleen tissue GTX03707 Gremlin 1 antibody.  
Dilution : 1:200



For full product information, images and publications, please visit our [website](#).