



# SZABO SCANDIC

Part of Europa Biosite

## Produktinformation



Forschungsprodukte & Biochemikalien



Zellkultur & Verbrauchsmaterial



Diagnostik & molekulare Diagnostik



Laborgeräte & Service

Weitere Information auf den folgenden Seiten!  
See the following pages for more information!



### Lieferung & Zahlungsart

siehe unsere [Liefer- und Versandbedingungen](#)

### Zuschläge

- Mindermengenzuschlag
- Trockeneiszuschlag
- Gefahrgutzuschlag
- Expressversand

### SZABO-SCANDIC HandelsgmbH

Quellenstraße 110, A-1100 Wien

T. +43(0)1 489 3961-0

F. +43(0)1 489 3961-7

[mail@szabo-scandic.com](mailto:mail@szabo-scandic.com)

[www.szabo-scandic.com](http://www.szabo-scandic.com)

[linkedin.com/company/szaboscandic](https://www.linkedin.com/company/szaboscandic) 

## GDNF antibody

Cat. No. GTX03708

Host	Rabbit
Clonality	Polyclonal
Isotype	IgG
Application	WB, ICC/IF, IHC-Fr
Reactivity	Human, Mouse, Rat

Package  
50 µl

## APPLICATION

## Application Note

\*Optimal dilutions/concentrations should be determined by the researcher.

Suggested dilution	Recommended dilution
WB	1:1000
ICC/IF	1:200-1:500
IHC-Fr	1:100

Not tested in other applications.

Calculated MW 24 kDa. ([Note](#))

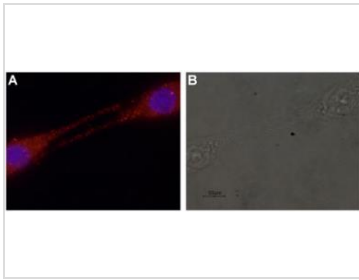
## PROPERTIES

Form	Liquid
Buffer	PBS pH 7.4, 1% BSA
Preservative	0.05% sodium azide
Storage	Store as concentrated solution. Centrifuge briefly prior to opening vial. For short-term storage (1-2 weeks), store at 4°C. For long-term storage, aliquot and store at -20°C or below. Avoid multiple freeze-thaw cycles.
Concentration	0.8 mg/ml (Please refer to the vial label for the specific concentration.)
Immunogen	Peptide (C)DDNLVYHILRKHSKR, corresponding to amino acid residues 192-207 of human GDNF (precursor) (Accession P39905), C-terminus of the mature GDNF.
Purification	Purified by antigen-affinity chromatography
Conjugation	Unconjugated
Note	For laboratory use only. Not for any clinical, therapeutic, or diagnostic use in humans or animals. Not for animal or human consumption.



For full product information, images and publications, please visit our [website](#).

DATA IMAGES



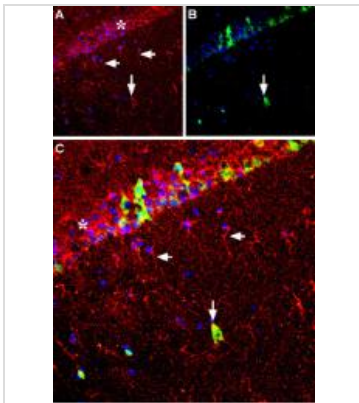
**GTX03708 ICC/IF Image**

ICC/IF analysis of PFA-fixed rat C6 glioma cells using GTX03708 GDNF antibody.

Red : Primary antibody

Blue : Hoechst 33342

Dilution : 1:200



**GTX03708 IHC-Fr Image**

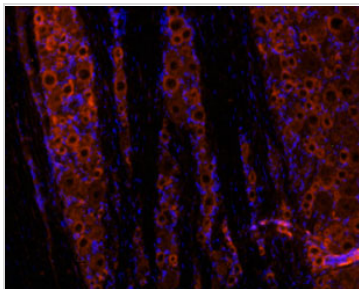
IHC-Fr analysis of rat hippocampus tissue using GTX03708 GDNF antibody. GDNF staining is apparent in the pyramidal layer (asterik), in astrocytic fibers (horizontal arrows) and in some interneurons (vertical arrow).

Red : GDNF

Green : Calbindin D28k

Blue : DAPI is used as the counterstain

Dilution : 1:100



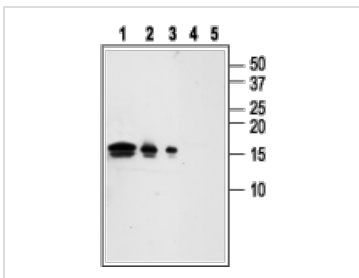
**GTX03708 IHC-Fr Image**

IHC-Fr analysis of rat dorsal root ganglion (DRG) tissue using GTX03708 GDNF antibody. GDNF staining is specific for neurons. Note that Schwann cells as well as satellite glial cells are both negative.

Dilution : 1:50

Red : Primary antibody

Blue : Hoechst 33342



**GTX03708 WB Image**

WB analysis of serially diluted recombinant human GDNF protein lysates using GTX03708 GDNF antibody.

Lane 1-3 : Primary antibody

Lane 4-5 : Primary antibody preincubated with GDNF blocking peptide

Dilution : 1:1000



For full product information, images and publications, please visit our [website](#).