



# SZABO SCANDIC

Part of Europa Biosite

## Produktinformation



Forschungsprodukte & Biochemikalien



Zellkultur & Verbrauchsmaterial



Diagnostik & molekulare Diagnostik



Laborgeräte & Service

Weitere Information auf den folgenden Seiten!  
See the following pages for more information!



### Lieferung & Zahlungsart

siehe unsere [Liefer- und Versandbedingungen](#)

### Zuschläge

- Mindermengenzuschlag
- Trockeneiszuschlag
- Gefahrgutzuschlag
- Expressversand

### SZABO-SCANDIC HandelsgmbH

Quellenstraße 110, A-1100 Wien

T. +43(0)1 489 3961-0

F. +43(0)1 489 3961-7

[mail@szabo-scandic.com](mailto:mail@szabo-scandic.com)

[www.szabo-scandic.com](http://www.szabo-scandic.com)

[linkedin.com/company/szaboscandic](https://www.linkedin.com/company/szaboscandic) 

## SIRT3 antibody

**Cat. No. GTX03711**

<b>Host</b>	Rabbit
<b>Clonality</b>	Polyclonal
<b>Isotype</b>	IgG
<b>Application</b>	WB, IHC-P, IP, IHC
<b>Reactivity</b>	Human, Mouse

**Package**  
400 µl

## APPLICATION

**Application Note**

\*Optimal dilutions/concentrations should be determined by the researcher.

Suggested dilution	Recommended dilution
WB	1:1000
IHC-P	1:50-100
IP	Assay dependent
IHC	Assay dependent

Not tested in other applications.

**Calculated MW** 44 kDa. ([Note](#))

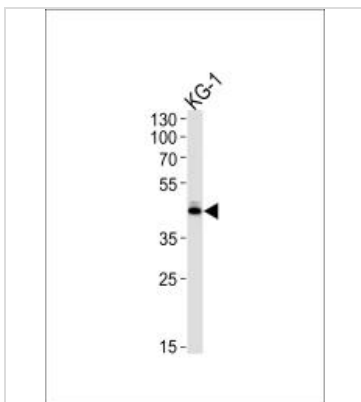
## PROPERTIES

<b>Form</b>	Liquid
<b>Buffer</b>	PBS
<b>Preservative</b>	0.09% sodium azide
<b>Storage</b>	Store as concentrated solution. Centrifuge briefly prior to opening vial. For short-term storage (1-2 weeks), store at 4°C. For long-term storage, aliquot and store at -20°C or below. Avoid multiple freeze-thaw cycles.
<b>Concentration</b>	Batch dependent (Please refer to the vial label for the specific concentration.)
<b>Immunogen</b>	KLH conjugated synthetic peptide between 250-279 amino acids from the C-terminal region of human SIRT3.
<b>Purification</b>	Protein A purified followed by antigen-affinity chromatography
<b>Conjugation</b>	Unconjugated
<b>Note</b>	For laboratory use only. Not for any clinical, therapeutic, or diagnostic use in humans or animals. Not for animal or human consumption.



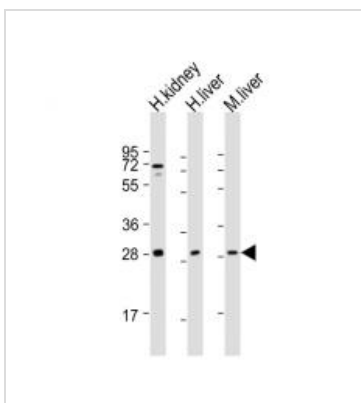
For full product information, images and publications, please visit our [website](#).

DATA IMAGES



**GTX03711 WB Image**

WB analysis of KG-1 cell line lysates (35ug/lane) using GTX03711 SIRT3 antibody.



**GTX03711 WB Image**

WB analysis of various sample lysates using GTX03711 SIRT3 antibody.

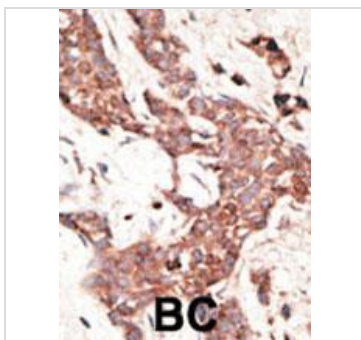
Lane 1 : human kidney lysate

Lane 2 : human liver lysate

Lane 3 : mouse liver lysate

Dilution : 1:2000

Loading : 20 µg per lane



**GTX03711 IHC-P Image**

IHC-P analysis of human breast cancer tissue using GTX03711 SIRT3 antibody.



For full product information, images and publications, please visit our [website](#).