



SZABO SCANDIC

Part of Europa Biosite

Produktinformation



Forschungsprodukte & Biochemikalien



Zellkultur & Verbrauchsmaterial



Diagnostik & molekulare Diagnostik



Laborgeräte & Service

Weitere Information auf den folgenden Seiten!
See the following pages for more information!



Lieferung & Zahlungsart

siehe unsere [Liefer- und Versandbedingungen](#)

Zuschläge

- Mindermengenzuschlag
- Trockeneiszuschlag
- Gefahrgutzuschlag
- Expressversand

SZABO-SCANDIC HandelsgmbH

Quellenstraße 110, A-1100 Wien

T. +43(0)1 489 3961-0

F. +43(0)1 489 3961-7

mail@szabo-scandic.com

www.szabo-scandic.com

[linkedin.com/company/szaboscandic](https://www.linkedin.com/company/szaboscandic) 

Claudin 3 antibody

Cat. No. GTX03712

Host	Rabbit
Clonality	Polyclonal
Isotype	IgG
Application	WB, ICC/IF, IHC-P, FACS, ELISA
Reactivity	Human

Package
100 µg

APPLICATION

Application Note

*Optimal dilutions/concentrations should be determined by the researcher.

Suggested dilution	Recommended dilution
WB	0.1-0.25µg/ml
ICC/IF	5µg/ml
IHC-P	2-5µg/ml
FACS	1-3µg/1x10 ⁶ cells
ELISA	0.1-0.5µg/ml

Not tested in other applications.

Calculated MW 23 kDa. ([Note](#))

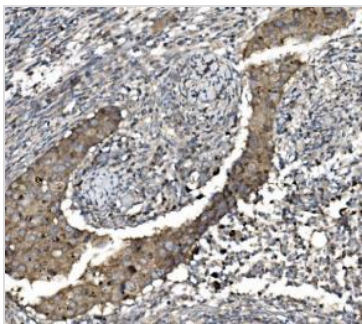
PROPERTIES

Form	Liquid
Buffer	4mg Trehalose, 0.9mg NaCl, 0.2mg Na ₂ HPO ₄
Preservative	No preservatives
Storage	Store as concentrated solution. Centrifuge briefly prior to opening vial. For short-term storage (1-2 weeks), store at 4°C. For long-term storage, aliquot and store at -20°C or below. Avoid multiple freeze-thaw cycles.
Concentration	0.5 mg/ml (Please refer to the vial label for the specific concentration.)
Immunogen	E.coli-derived human Claudin 3/CLDN3 recombinant protein (Position: A101-V220).
Purification	Purified by antigen-affinity chromatography
Conjugation	Unconjugated
Note	For laboratory use only. Not for any clinical, therapeutic, or diagnostic use in humans or animals. Not for animal or human consumption.



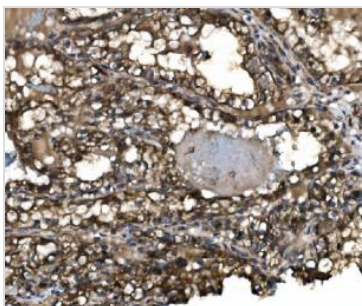
For full product information, images and publications, please visit our [website](#).

DATA IMAGES



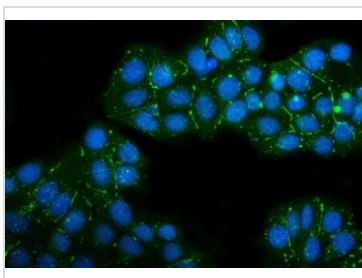
GTX03712 IHC-P Image

IHC-P analysis of human breast invasive ductal cancer tissue using GTX03712 Claudin 3 antibody.
 Antigen retrieval : Heat mediated antigen retrieval was performed in EDTA buffer (pH8.0, epitope retrieval solution)
 Dilution : 2µg/ml



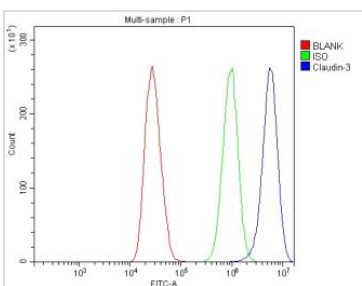
GTX03712 IHC-P Image

IHC-P analysis of human renal clear cell carcinoma tissue using GTX03712 Claudin 3 antibody.
 Antigen retrieval : Heat mediated antigen retrieval was performed in EDTA buffer (pH8.0, epitope retrieval solution)
 Dilution : 2µg/ml



GTX03712 ICC/IF Image

ICC/IF analysis of MCF-7 cells using GTX03712 Claudin 3 antibody.
 Green : Primary antibody
 Blue : DAPI
 Antigen retrieval : Enzyme antigen retrieval was performed for 15 mins
 Dilution : 5µg/mL



GTX03712 FACS Image

FACS analysis of MCF-7 cells using GTX03712 Claudin 3 antibody.
 Blue : Primary antibody
 Green : Isotype control
 Red : Unlabelled sample
 Antibody amount : 1µg/1x10⁶ cells



For full product information, images and publications, please visit our [website](#).