



SZABO SCANDIC

Part of Europa Biosite

Produktinformation



Forschungsprodukte & Biochemikalien



Zellkultur & Verbrauchsmaterial



Diagnostik & molekulare Diagnostik



Laborgeräte & Service

Weitere Information auf den folgenden Seiten!
See the following pages for more information!



Lieferung & Zahlungsart

siehe unsere [Liefer- und Versandbedingungen](#)

Zuschläge

- Mindermengenzuschlag
- Trockeneiszuschlag
- Gefahrgutzuschlag
- Expressversand

SZABO-SCANDIC HandelsgmbH

Quellenstraße 110, A-1100 Wien

T. +43(0)1 489 3961-0

F. +43(0)1 489 3961-7

mail@szabo-scandic.com

www.szabo-scandic.com

[linkedin.com/company/szaboscandic](https://www.linkedin.com/company/szaboscandic) 

PPAR alpha (phospho Ser12) antibody

Cat. No. GTX03713

Host	Rabbit
Clonality	Polyclonal
Isotype	IgG
Application	WB, IHC-P, ELISA
Reactivity	Human, Mouse, Rat

Package
100 µl

APPLICATION

Application Note

*Optimal dilutions/concentrations should be determined by the researcher.

Suggested dilution	Recommended dilution
WB	1:500-1:2000
IHC-P	1:100-1:500
ELISA	1:5000-1:10000

Not tested in other applications.

Calculated MW 52 kDa. ([Note](#))

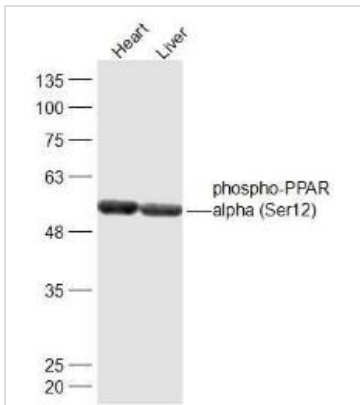
PROPERTIES

Form	Liquid
Buffer	0.01M TBS pH7.4, 1% BSA, 50% Glycerol
Preservative	0.03% Proclin300
Storage	Store as concentrated solution. Centrifuge briefly prior to opening vial. For short-term storage (1-2 weeks), store at 4°C. For long-term storage, aliquot and store at -20°C or below. Avoid multiple freeze-thaw cycles.
Concentration	1 mg/ml (Please refer to the vial label for the specific concentration.)
Immunogen	KLH conjugated synthetic phosphopeptide derived from human PPAR alpha around the phosphorylation site of ser12.
Purification	Protein A purified
Conjugation	Unconjugated
Note	For laboratory use only. Not for any clinical, therapeutic, or diagnostic use in humans or animals. Not for animal or human consumption.



For full product information, images and publications, please visit our [website](#).

DATA IMAGES



GTX03713 WB Image

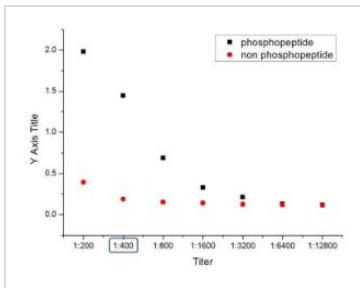
WB analysis of various sample lysates using GTX03713 PPAR alpha (phospho Ser12) antibody.

Lane 1 : Mouse Heart

Lane 2 : Mouse Liver

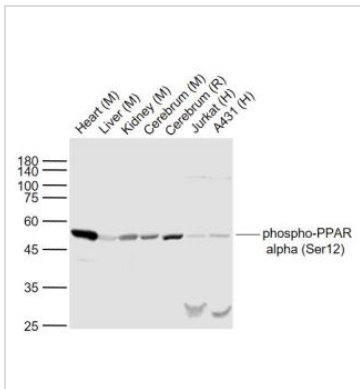
Loading : 40µg

Dilution : 1:300



GTX03713 ELISA Image

ELISA analysis of phosphopeptide and non-phosphorylated antigen using serial diluted GTX03713 PPAR alpha (phospho Ser12) antibody.



GTX03713 WB Image

WB analysis of various sample lysates using GTX03713 PPAR alpha (phospho Ser12) antibody.

Lane 1: Mouse Heart lysates

Lane 2 : Mouse Liver lysates

Lane 3 : Mouse Kidney lysates

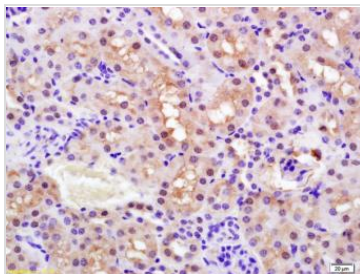
Lane 4 : Mouse Cerebrum lysates

Lane 5 : Rat Cerebrum lysates

Lane 6 : Jurkat cell lysates

Lane 7 : A431 cell lysates

Dilution : 1:1000



GTX03713 IHC-P Image

IHC-P analysis of rat kidney tissue using GTX03713 PPAR alpha (phospho Ser12) antibody.

Dilution : 1:200



For full product information, images and publications, please visit our [website](#).