



SZABO SCANDIC

Part of Europa Biosite

Produktinformation



Forschungsprodukte & Biochemikalien



Zellkultur & Verbrauchsmaterial



Diagnostik & molekulare Diagnostik



Laborgeräte & Service

Weitere Information auf den folgenden Seiten!
See the following pages for more information!



Lieferung & Zahlungsart

siehe unsere [Liefer- und Versandbedingungen](#)

Zuschläge

- Mindermengenzuschlag
- Trockeneiszuschlag
- Gefahrgutzuschlag
- Expressversand

SZABO-SCANDIC HandelsgmbH

Quellenstraße 110, A-1100 Wien

T. +43(0)1 489 3961-0

F. +43(0)1 489 3961-7

mail@szabo-scandic.com

www.szabo-scandic.com

[linkedin.com/company/szaboscandic](https://www.linkedin.com/company/szaboscandic) 

MMP11 antibody

Cat. No. GTX03717

Host	Rabbit
Clonality	Polyclonal
Isotype	IgG
Application	WB, IHC-P
Reactivity	Human, Mouse, Rat

Package
100 µg

APPLICATION

Application Note

*Optimal dilutions/concentrations should be determined by the researcher.

Suggested dilution	Recommended dilution
WB	0.1-0.5µg/ml
IHC-P	0.5-1µg/ml

Note : Antigen retrieval by heat

Not tested in other applications.

Calculated MW 55 kDa. ([Note](#))

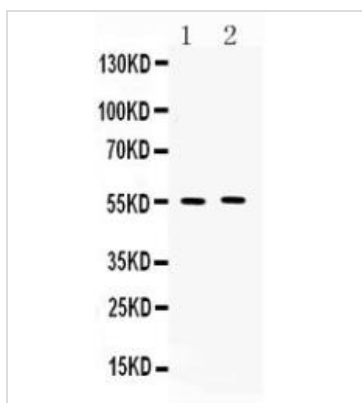
PROPERTIES

Form	Liquid
Buffer	4mg Trehalose, 0.9mg NaCl, 0.2mg Na ₂ HPO ₄
Preservative	0.05mg sodium azide
Storage	Store as concentrated solution. Centrifuge briefly prior to opening vial. For short-term storage (1-2 weeks), store at 4°C. For long-term storage, aliquot and store at -20°C or below. Avoid multiple freeze-thaw cycles.
Concentration	0.5 mg/ml (Please refer to the vial label for the specific concentration.)
Immunogen	A synthetic peptide corresponding to a sequence at the N-terminus of human MMP11 (104-135aa RWEKTDLTyrILRFPWQLVQEVRQTMAEALK), different from the related mouse and rat sequences by three amino acids.
Purification	Purified by antigen-affinity chromatography
Conjugation	Unconjugated
Note	For laboratory use only. Not for any clinical, therapeutic, or diagnostic use in humans or animals. Not for animal or human consumption.



For full product information, images and publications, please visit our [website](#).

DATA IMAGES

**GTX03717 WB Image**

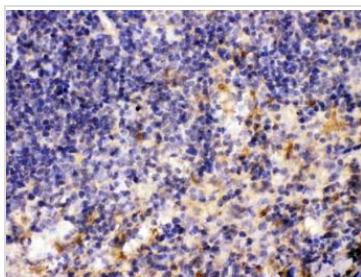
WB analysis of various cell lysates using GTX03717 MMP11 antibody.

Lane 1 : Rat spleen tissue

Lane 2 : MM231 cell lysate

Dilution : 0.5 µg/mL

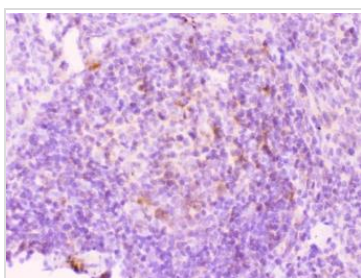
Loading : 50 µg per lane

**GTX03717 IHC-P Image**

IHC-P analysis of mouse spleen tissue using GTX03717 MMP11 antibody.

Antigen retrieval : Heat mediated antigen retrieval was performed in citrate buffer (pH6, epitope retrieval solution) for 20 mins

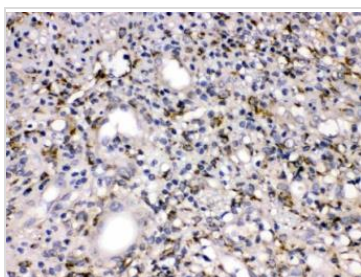
Dilution : 1µg/ml

**GTX03717 IHC-P Image**

IHC-P analysis of rat spleen tissue using GTX03717 MMP11 antibody.

Antigen retrieval : Heat mediated antigen retrieval was performed in citrate buffer (pH6, epitope retrieval solution) for 20 mins

Dilution : 1µg/ml

**GTX03717 IHC-P Image**

IHC-P analysis of human appendicitis tissue using GTX03717 MMP11 antibody.

Antigen retrieval : Heat mediated antigen retrieval was performed in citrate buffer (pH6, epitope retrieval solution) for 20 mins

Dilution : 1µg/ml



For full product information, images and publications, please visit our [website](#).