



# SZABO SCANDIC

Part of Europa Biosite

## Produktinformation



Forschungsprodukte & Biochemikalien



Zellkultur & Verbrauchsmaterial



Diagnostik & molekulare Diagnostik



Laborgeräte & Service

Weitere Information auf den folgenden Seiten!  
See the following pages for more information!



### Lieferung & Zahlungsart

siehe unsere [Liefer- und Versandbedingungen](#)

### Zuschläge

- Mindermengenzuschlag
- Trockeneiszuschlag
- Gefahrgutzuschlag
- Expressversand

### SZABO-SCANDIC HandelsgmbH

Quellenstraße 110, A-1100 Wien

T. +43(0)1 489 3961-0

F. +43(0)1 489 3961-7

[mail@szabo-scandic.com](mailto:mail@szabo-scandic.com)

[www.szabo-scandic.com](http://www.szabo-scandic.com)

[linkedin.com/company/szaboscandic](https://www.linkedin.com/company/szaboscandic) 

## IL18 antibody

**Cat. No. GTX03734**

<b>Host</b>	Rabbit
<b>Clonality</b>	Polyclonal
<b>Isotype</b>	IgG
<b>Application</b>	WB, IHC-P, FACS, ELISA
<b>Reactivity</b>	Mouse, Rat

**Package**  
100 µg

## APPLICATION

**Application Note**

\*Optimal dilutions/concentrations should be determined by the researcher.

Suggested dilution	Recommended dilution
WB	0.25-0.5µg/ml
IHC-P	2-5µg/ml
FACS	1-3µg/1x10 <sup>6</sup> cells
ELISA	0.1-0.5µg/ml

**Note : Antigen retrieval by heat**

Not tested in other applications.

**Calculated MW** 22 kDa. ([Note](#))

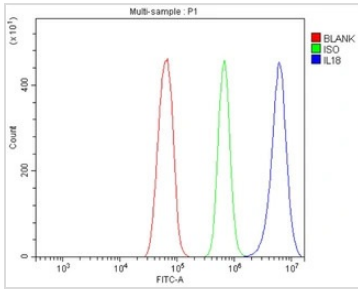
## PROPERTIES

<b>Form</b>	Liquid
<b>Buffer</b>	4mg Trehalose, 0.9mg NaCl, 0.2mg Na <sub>2</sub> HPO <sub>4</sub>
<b>Preservative</b>	0.05mg sodium azide
<b>Storage</b>	Store as concentrated solution. Centrifuge briefly prior to opening vial. For short-term storage (1-2 weeks), store at 4°C. For long-term storage, aliquot and store at -20°C or below. Avoid multiple freeze-thaw cycles.
<b>Concentration</b>	0.5 mg/ml (Please refer to the vial label for the specific concentration.)
<b>Immunogen</b>	E.coli-derived rat IL-18 recombinant protein (Position: H37-S194).
<b>Purification</b>	Purified by antigen-affinity chromatography
<b>Conjugation</b>	Unconjugated
<b>Note</b>	For laboratory use only. Not for any clinical, therapeutic, or diagnostic use in humans or animals. Not for animal or human consumption.



For full product information, images and publications, please visit our [website](#).

## DATA IMAGES

**GTX03734 FACS Image**

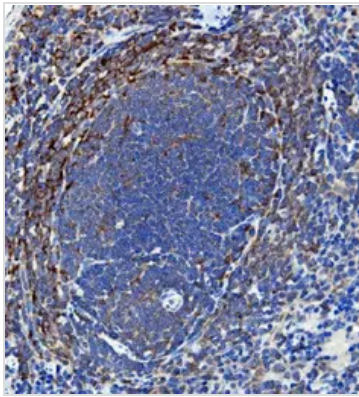
FACS analysis of RH35 cells using GTX03734 IL18 antibody.

Antibody amount : 1  $\mu\text{g}/1 \times 10^6$  cells

Blue : Primary antibody

Green : Isotype control

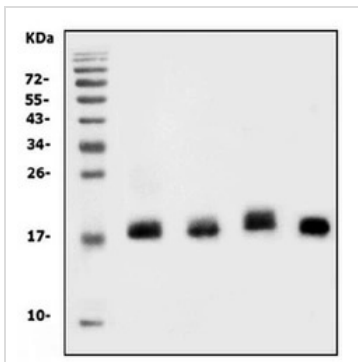
Red : Unlabelled sample

**GTX03734 IHC-P Image**

IHC-P analysis of rat spleen tissue using GTX03734 IL18 antibody.

Antigen retrieval : Heat mediated antigen retrieval was performed in EDTA buffer (pH8.0, epitope retrieval solution)

Dilution : 2  $\mu\text{g}/\text{ml}$

**GTX03734 WB Image**

WB analysis of various lysates using GTX03734 IL18 antibody.

Lane 1 : Mouse spleen

Lane 2 : Mouse thymus

Lane 3 : Mouse lung

Lane 4 : ANA-1 cells

Dilution : 0.5  $\mu\text{g}/\text{ml}$

Loading : 30  $\mu\text{g}$  per lane



For full product information, images and publications, please visit our [website](#).