



# SZABO SCANDIC

Part of Europa Biosite

## Produktinformation



Forschungsprodukte & Biochemikalien



Zellkultur & Verbrauchsmaterial



Diagnostik & molekulare Diagnostik



Laborgeräte & Service

Weitere Information auf den folgenden Seiten!  
See the following pages for more information!



### Lieferung & Zahlungsart

siehe unsere [Liefer- und Versandbedingungen](#)

### Zuschläge

- Mindermengenzuschlag
- Trockeneiszuschlag
- Gefahrgutzuschlag
- Expressversand

### SZABO-SCANDIC HandelsgmbH

Quellenstraße 110, A-1100 Wien

T. +43(0)1 489 3961-0

F. +43(0)1 489 3961-7

[mail@szabo-scandic.com](mailto:mail@szabo-scandic.com)

[www.szabo-scandic.com](http://www.szabo-scandic.com)

[linkedin.com/company/szaboscandic](https://www.linkedin.com/company/szaboscandic) 

## Caspase 1 (cleaved Asp297) antibody

**Cat. No. GTX03738**

<b>Host</b>	Rabbit
<b>Clonality</b>	Polyclonal
<b>Isotype</b>	IgG
<b>Application</b>	WB, ICC/IF, IHC-P
<b>Reactivity</b>	Human, Mouse, Rat

**Package**  
100 µl

## APPLICATION

**Application Note**

\*Optimal dilutions/concentrations should be determined by the researcher.

Suggested dilution	Recommended dilution
WB	1:500-1:2000
ICC/IF	Assay dependent
IHC-P	1:50-1:200

Not tested in other applications.

**Calculated MW** 45 kDa. ([Note](#))

**Product Note** This antibody detects endogenous levels of fragment of activated Caspase-1 resulting from cleavage adjacent to Asp297.

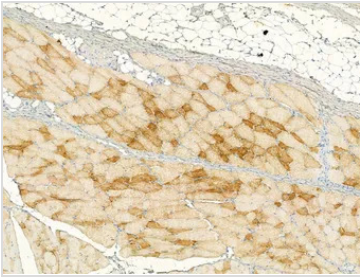
## PROPERTIES

<b>Form</b>	Liquid
<b>Buffer</b>	PBS pH 7.4, 150mM NaCl, 50% glycerol
<b>Preservative</b>	0.02% sodium azide
<b>Storage</b>	Store as concentrated solution. Centrifuge briefly prior to opening vial. For short-term storage (1-2 weeks), store at 4°C. For long-term storage, aliquot and store at -20°C or below. Avoid multiple freeze-thaw cycles.
<b>Concentration</b>	1 mg/ml (Please refer to the vial label for the specific concentration.)
<b>Immunogen</b>	A synthesized peptide derived from human CASP1(Accession P29466), corresponding to amino acid residues I280-V299.
<b>Purification</b>	Purified by antigen-affinity chromatography From serum
<b>Conjugation</b>	Unconjugated
<b>Note</b>	For laboratory use only. Not for any clinical, therapeutic, or diagnostic use in humans or animals. Not for animal or human consumption.



For full product information, images and publications, please visit our [website](#).

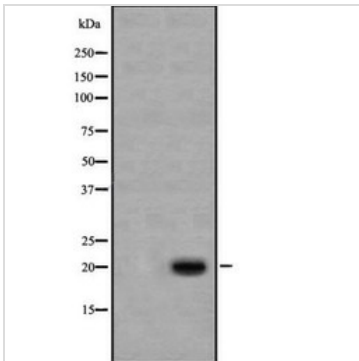
## DATA IMAGES

**GTX03738 IHC-P Image**

IHC-P analysis of rat skin tissue using GTX03738 Caspase 1 (cleaved Asp297) antibody.  
Antigen retrieval : Heat mediated antigen retrieval step in citrate buffer was performed  
Dilution : 1:100

**GTX03738 IHC-P Image**

IHC-P analysis of rat heart tissue using GTX03738 Caspase 1 (cleaved Asp297) antibody.  
Antigen retrieval : Heat mediated antigen retrieval step in citrate buffer was performed  
Dilution : 1:100

**GTX03738 WB Image**

WB analysis of Jurkat cell lysates using GTX03738 Caspase 1 (cleaved Asp297) antibody.



For full product information, images and publications, please visit our [website](#).