



SZABO SCANDIC

Part of Europa Biosite

Produktinformation



Forschungsprodukte & Biochemikalien



Zellkultur & Verbrauchsmaterial



Diagnostik & molekulare Diagnostik



Laborgeräte & Service

Weitere Information auf den folgenden Seiten!
See the following pages for more information!



Lieferung & Zahlungsart

siehe unsere [Liefer- und Versandbedingungen](#)

Zuschläge

- Mindermengenzuschlag
- Trockeneiszuschlag
- Gefahrgutzuschlag
- Expressversand

SZABO-SCANDIC HandelsgmbH

Quellenstraße 110, A-1100 Wien

T. +43(0)1 489 3961-0

F. +43(0)1 489 3961-7

mail@szabo-scandic.com

www.szabo-scandic.com

[linkedin.com/company/szaboscandic](https://www.linkedin.com/company/szaboscandic) 

Citrulline antibody [2D3.1]

Cat. No. GTX03741

Host	Mouse
Clonality	Monoclonal
Isotype	IgG1
Application	WB, ICC/IF, ELISA, IHC
Reactivity	Species independent

Package
100 µg

APPLICATION

Application Note

*Optimal dilutions/concentrations should be determined by the researcher.

Suggested dilution	Recommended dilution
WB	1:1000
ICC/IF	1:50
ELISA	1:1000
IHC	1:100

Not tested in other applications.

Product Note Specific for citrulline residues on modified proteins. Tested using citrulline conjugated Bovine Serum Albumin (BSA).

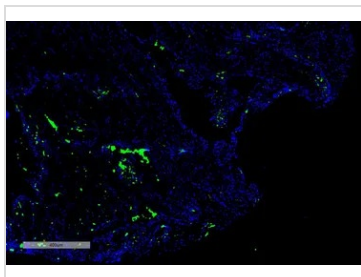
PROPERTIES

Form	Liquid
Buffer	PBS pH 7.4, 50% glycerol
Preservative	0.09% sodium azide
Storage	Store as concentrated solution. Centrifuge briefly prior to opening vial. For short-term storage (1-2 weeks), store at 4°C. For long-term storage, aliquot and store at -20°C or below. Avoid multiple freeze-thaw cycles.
Concentration	1 mg/ml (Please refer to the vial label for the specific concentration.)
Immunogen	Synthetic L-Citrulline conjugated to Keyhole Limpet Hemocyanin (KLH).
Purification	Protein G purified
Conjugation	Unconjugated
Note	For laboratory use only. Not for any clinical, therapeutic, or diagnostic use in humans or animals. Not for animal or human consumption.



For full product information, images and publications, please visit our [website](#).

DATA IMAGES

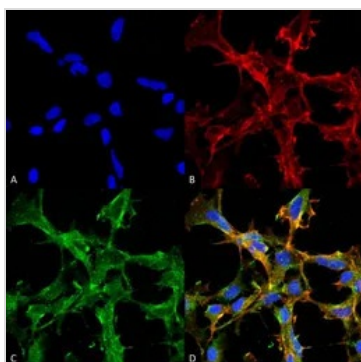
**GTX03741 IHC Image**

IHC analysis of human thyroid cancer tissue using GTX03741 Citrulline antibody [2D3.1].

Green : Primary antibody

Blue : DAPI

Dilution : 1:100

**GTX03741 ICC/IF Image**

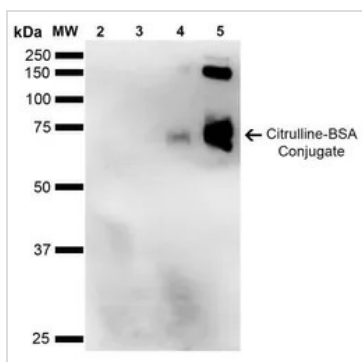
ICC/IF analysis of 5% formaldehyde-fixed HEK293 cells using GTX03741 Citrulline antibody [2D3.1].

Green : Primary antibody

Red : F-actin

Blue : DAPI

Dilution : 1:50

**GTX03741 WB Image**

WB analysis of Citrulline-BSA Conjugate using GTX03741 Citrulline antibody [2D3.1].

Lane 1 : Molecular Weight Ladder (MW)

Lane 2 : BSA (0.5 µg)

Lane 3 : BSA (2.0 µg)

Lane 4 : Citrulline-BSA (0.5 µg)

Lane 5 : Citrulline-BSA (2.0 µg)

Dilution : 1:1000



For full product information, images and publications, please visit our [website](#).