



# SZABO SCANDIC

Part of Europa Biosite

## Produktinformation



Forschungsprodukte & Biochemikalien



Zellkultur & Verbrauchsmaterial



Diagnostik & molekulare Diagnostik



Laborgeräte & Service

Weitere Information auf den folgenden Seiten!  
See the following pages for more information!



### Lieferung & Zahlungsart

siehe unsere [Liefer- und Versandbedingungen](#)

### Zuschläge

- Mindermengenzuschlag
- Trockeneiszuschlag
- Gefahrgutzuschlag
- Expressversand

### SZABO-SCANDIC HandelsgmbH

Quellenstraße 110, A-1100 Wien

T. +43(0)1 489 3961-0

F. +43(0)1 489 3961-7

[mail@szabo-scandic.com](mailto:mail@szabo-scandic.com)

[www.szabo-scandic.com](http://www.szabo-scandic.com)

[linkedin.com/company/szaboscandic](https://www.linkedin.com/company/szaboscandic) 

## Citrulline antibody [6C2.1]

Cat. No. GTX03742

<b>Host</b>	Mouse
<b>Clonality</b>	Monoclonal
<b>Isotype</b>	IgG1
<b>Application</b>	WB, ICC/IF, IHC-P, ELISA
<b>Reactivity</b>	Species independent

Package  
100 µg

## APPLICATION

## Application Note

\*Optimal dilutions/concentrations should be determined by the researcher.

Suggested dilution	Recommended dilution
WB	1:1000
ICC/IF	1:50
IHC-P	1:25
ELISA	1:1000

Not tested in other applications.

**Product Note** Specific for citrulline residues on modified proteins. Tested using citrulline conjugated Bovine Serum Albumin (BSA).

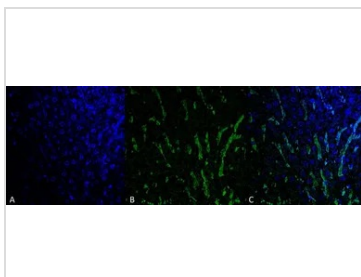
## PROPERTIES

<b>Form</b>	Liquid
<b>Buffer</b>	PBS pH 7.4, 50% glycerol
<b>Preservative</b>	0.09% sodium azide
<b>Storage</b>	Store as concentrated solution. Centrifuge briefly prior to opening vial. For short-term storage (1-2 weeks), store at 4°C. For long-term storage, aliquot and store at -20°C or below. Avoid multiple freeze-thaw cycles.
<b>Concentration</b>	1 mg/ml (Please refer to the vial label for the specific concentration.)
<b>Immunogen</b>	Synthetic L-Citrulline conjugated to Keyhole Limpet Hemocyanin (KLH).
<b>Purification</b>	Protein G purified
<b>Conjugation</b>	Unconjugated
<b>Note</b>	For laboratory use only. Not for any clinical, therapeutic, or diagnostic use in humans or animals. Not for animal or human consumption.



For full product information, images and publications, please visit our [website](#).

DATA IMAGES



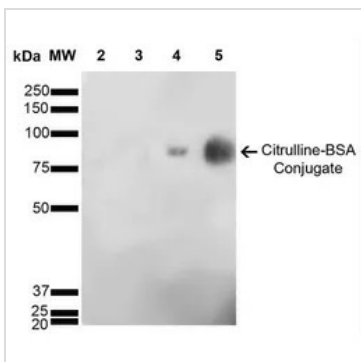
**GTX03742 IHC-P Image**

IHC-P analysis of mouse colon tissue using GTX03742 Citrulline antibody [6C2.1].

Green : Primary antibody

Blue : DAPI

Dilution : 1:25



**GTX03742 WB Image**

WB analysis of Citrulline-BSA Conjugate using GTX03742 Citrulline antibody [6C2.1].

Lane 1 : Molecular Weight Ladder (MW)

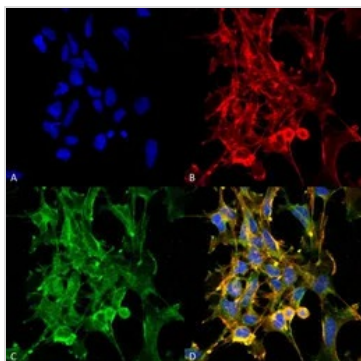
Lane 2 : BSA (0.5 µg)

Lane 3 : BSA (2.0 µg)

Lane 4 : Citrulline-BSA (0.5 µg)

Lane 5 : Citrulline-BSA (2.0 µg)

Dilution : 1:1000



**GTX03742 ICC/IF Image**

ICC/IF analysis of 5% formaldehyde-fixed HEK293 cells using GTX03742 Citrulline antibody [6C2.1].

Green : Primary antibody

Red : F-actin

Blue : DAPI

Dilution : 1:50



For full product information, images and publications, please visit our [website](#).