



SZABO SCANDIC

Part of Europa Biosite

Produktinformation



Forschungsprodukte & Biochemikalien



Zellkultur & Verbrauchsmaterial



Diagnostik & molekulare Diagnostik



Laborgeräte & Service

Weitere Information auf den folgenden Seiten!
See the following pages for more information!



Lieferung & Zahlungsart

siehe unsere [Liefer- und Versandbedingungen](#)

Zuschläge

- Mindermengenzuschlag
- Trockeneiszuschlag
- Gefahrgutzuschlag
- Expressversand

SZABO-SCANDIC HandelsgmbH

Quellenstraße 110, A-1100 Wien

T. +43(0)1 489 3961-0

F. +43(0)1 489 3961-7

mail@szabo-scandic.com

www.szabo-scandic.com

[linkedin.com/company/szaboscandic](https://www.linkedin.com/company/szaboscandic) 

MAP4K3 antibody

Cat. No. GTX03745

Host	Rabbit
Clonality	Polyclonal
Isotype	IgG
Application	WB, ICC/IF, IHC-P
Reactivity	Human, Mouse, Rat

Package
100 µl

APPLICATION

Application Note

*Optimal dilutions/concentrations should be determined by the researcher.

Suggested dilution	Recommended dilution
WB	1:500-1:1000
ICC/IF	1:100-1:500
IHC-P	1:50-1:200

Not tested in other applications.

Calculated MW 101 kDa. ([Note](#))

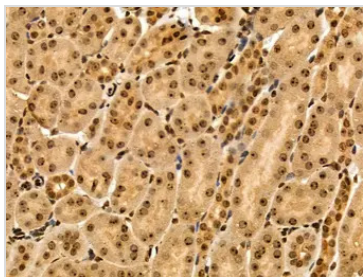
PROPERTIES

Form	Liquid
Buffer	PBS pH 7.4, 150mM NaCl, 50% glycerol
Preservative	0.02% sodium azide
Storage	Store as concentrated solution. Centrifuge briefly prior to opening vial. For short-term storage (1-2 weeks), store at 4°C. For long-term storage, aliquot and store at -20°C or below. Avoid multiple freeze-thaw cycles.
Concentration	1 mg/ml (Please refer to the vial label for the specific concentration.)
Immunogen	A synthesized peptide derived from human MAP4K3(Accession Q8IVH8), corresponding to amino acid residues M1-Q20.
Purification	Purified by antigen-affinity chromatography From serum
Conjugation	Unconjugated
Note	For laboratory use only. Not for any clinical, therapeutic, or diagnostic use in humans or animals. Not for animal or human consumption.



For full product information, images and publications, please visit our [website](#).

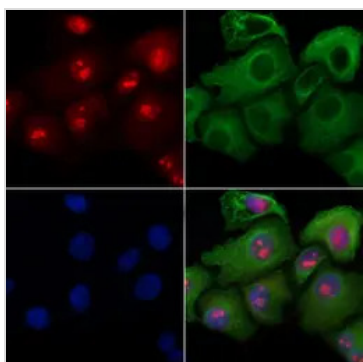
DATA IMAGES

**GTX03745 IHC-P Image**

IHC-P analysis mouse kidney tissue using GTX03745 MAP4K3 antibody.

Antigen retrieval : Heat mediated citrate buffer

Dilution : 1:100

**GTX03745 ICC/IF Image**

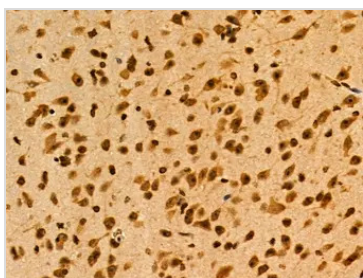
ICC/IF analysis of PFA-fixed HeLa cells using GTX03745 MAP4K3 antibody.

Red : Primary antibody

Green : Beta-tubulin

Blue : DAPI

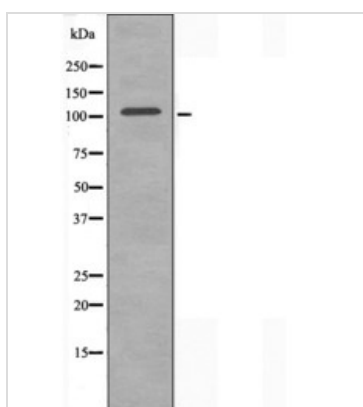
Permeabilization : 0.1% Triton X-100

**GTX03745 IHC-P Image**

IHC-P analysis mouse brain tissue using GTX03745 MAP4K3 antibody.

Antigen retrieval : Heat mediated citrate buffer

Dilution : 1:100

**GTX03745 WB Image**

WB analysis of HepG2 cell lysates using GTX03745 MAP4K3 antibody.



For full product information, images and publications, please visit our [website](#).