



SZABO SCANDIC

Part of Europa Biosite

Produktinformation



Forschungsprodukte & Biochemikalien



Zellkultur & Verbrauchsmaterial



Diagnostik & molekulare Diagnostik



Laborgeräte & Service

Weitere Information auf den folgenden Seiten!
See the following pages for more information!



Lieferung & Zahlungsart

siehe unsere [Liefer- und Versandbedingungen](#)

Zuschläge

- Mindermengenzuschlag
- Trockeneiszuschlag
- Gefahrgutzuschlag
- Expressversand

SZABO-SCANDIC HandelsgmbH

Quellenstraße 110, A-1100 Wien

T. +43(0)1 489 3961-0

F. +43(0)1 489 3961-7

mail@szabo-scandic.com

www.szabo-scandic.com

[linkedin.com/company/szaboscandic](https://www.linkedin.com/company/szaboscandic) 

BRCA2 (phospho Ser2095) antibody

Cat. No. GTX03783

| | |
|--------------------|--------------------------|
| Host | Rabbit |
| Clonality | Polyclonal |
| Isotype | IgG |
| Application | WB, ICC/IF, IHC-P, ELISA |
| Reactivity | Human, Mouse, Rat |

Package
100 µl

APPLICATION

Application Note

*Optimal dilutions/concentrations should be determined by the researcher.

| Suggested dilution | Recommended dilution |
|--------------------|----------------------|
| WB | 1:500-1:2000 |
| ICC/IF | 1:100-1:500 |
| IHC-P | 1:50-1:200 |
| ELISA | Assay dependent |

Not tested in other applications.

Calculated MW 384 kDa. ([Note](#))

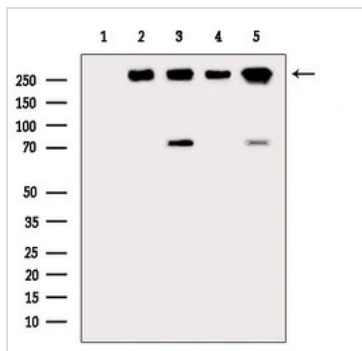
PROPERTIES

| | |
|----------------------|--|
| Form | Liquid |
| Buffer | PBS pH 7.4, 150mM NaCl, 50% glycerol |
| Preservative | 0.02% sodium azide |
| Storage | Store as concentrated solution. Centrifuge briefly prior to opening vial. For short-term storage (1-2 weeks), store at 4°C. For long-term storage, aliquot and store at -20°C or below. Avoid multiple freeze-thaw cycles. |
| Concentration | 1 mg/ml (Please refer to the vial label for the specific concentration.) |
| Immunogen | A synthesized peptide derived from human BRCA2(Accession P51587), corresponding to amino acid residues E2081-P2107. |
| Purification | Purified by sequential chromatography on phospho-peptide and non-phospho-peptide affinity columns From serum |
| Conjugation | Unconjugated |
| Note | For laboratory use only. Not for any clinical, therapeutic, or diagnostic use in humans or animals. Not for animal or human consumption. |



For full product information, images and publications, please visit our [website](#).

DATA IMAGES



GTX03783 WB Image

WB analysis of various lysates using GTX03783 BRCA2 (phospho Ser2095) antibody.

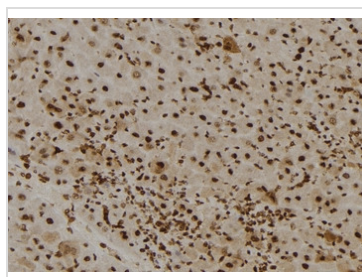
Lane 1: Rat liver, blocked with antigen-specific peptides.

Lane 2 : Rat liver.

Lane 3 : Mouse brain

Lane 4 : Hela cells (heat-shock treatment).

Lane 5 : HepG2 (heat-shock treatment)

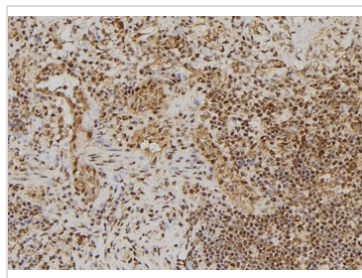


GTX03783 IHC-P Image

IHC-P analysis of mouse liver tissue using GTX03783 BRCA2 (phospho Ser2095) antibody.

Antigen retrieval : Heat mediated citrate buffer

Dilution : 1:100

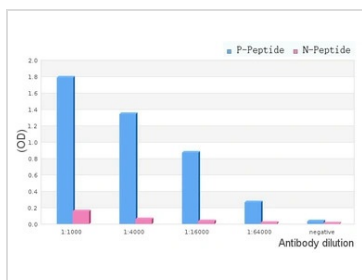


GTX03783 IHC-P Image

IHC-P analysis of human spleen tissue using GTX03783 BRCA2 (phospho Ser2095) antibody.

Antigen retrieval : Heat mediated citrate buffer

Dilution : 1:100



GTX03783 ELISA Image

ELISA analysis of phospho- and non phospho- immunogen peptide using serial diluted GTX03783 BRCA2 (phospho Ser2095) antibody.

P-peptide : phospho-peptide

N-peptide : non-phospho-peptide

Peptides concentration : 1µg/ml



For full product information, images and publications, please visit our [website](#).