



SZABO SCANDIC

Part of Europa Biosite

Produktinformation



Forschungsprodukte & Biochemikalien



Zellkultur & Verbrauchsmaterial



Diagnostik & molekulare Diagnostik



Laborgeräte & Service

Weitere Information auf den folgenden Seiten!
See the following pages for more information!



Lieferung & Zahlungsart

siehe unsere [Liefer- und Versandbedingungen](#)

Zuschläge

- Mindermengenzuschlag
- Trockeneiszuschlag
- Gefahrgutzuschlag
- Expressversand

SZABO-SCANDIC HandelsgmbH

Quellenstraße 110, A-1100 Wien

T. +43(0)1 489 3961-0

F. +43(0)1 489 3961-7

mail@szabo-scandic.com

www.szabo-scandic.com

[linkedin.com/company/szaboscandic](https://www.linkedin.com/company/szaboscandic) 

BRCA1 (phospho Ser1423) antibody

Cat. No. GTX03784

Host	Rabbit
Clonality	Polyclonal
Isotype	IgG
Application	WB, ICC/IF, IHC-P
Reactivity	Human, Mouse, Rat

Package
100 µl

APPLICATION

Application Note

*Optimal dilutions/concentrations should be determined by the researcher.

Suggested dilution	Recommended dilution
WB	1:500-1:2000
ICC/IF	1:50-1:200
IHC-P	1:50-1:200

Not tested in other applications.

Calculated MW 208 kDa. ([Note](#))

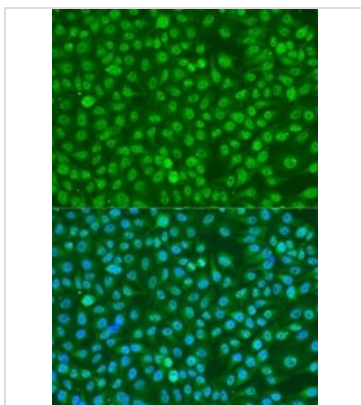
PROPERTIES

Form	Liquid
Buffer	PBS pH 7.3, 50% glycerol
Preservative	0.02% sodium azide
Storage	Store as concentrated solution. Centrifuge briefly prior to opening vial. For short-term storage (1-2 weeks), store at 4°C. For long-term storage, aliquot and store at -20°C or below. Avoid multiple freeze-thaw cycles.
Concentration	Batch dependent (Please refer to the vial label for the specific concentration.)
Immunogen	A synthetic phosphorylated peptide around S1423 of human BRCA1 (NP_009225.1).
Purification	Purified by affinity chromatography
Conjugation	Unconjugated
Note	For laboratory use only. Not for any clinical, therapeutic, or diagnostic use in humans or animals. Not for animal or human consumption.



For full product information, images and publications, please visit our [website](#).

DATA IMAGES

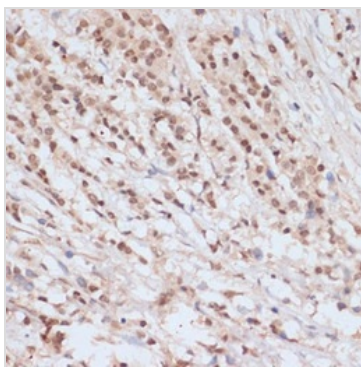
**GTX03784 ICC/IF Image**

ICC/IF analysis of U2OS cells using GTX03784 BRCA1 (phospho Ser1423) antibody.

Green : Primary antibody

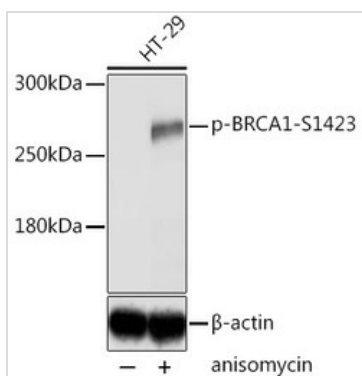
Blue : DAPI

Dilution : 1:100

**GTX03784 IHC-P Image**

IHC-P analysis of human breast cancer tissue using GTX03784 BRCA1 (phospho Ser1423) antibody.

Dilution : 1:100

**GTX03784 WB Image**

WB analysis of HT-29 cell treated by Anisomycin (5ug/mL) for 30 minutes after serum-starvation overnight lysates using GTX03784 BRCA1 (phospho Ser1423) antibody.

Dilution : 1:2000

Loading : 25 µg per lane



For full product information, images and publications, please visit our [website](#).