



SZABO SCANDIC

Part of Europa Biosite

Produktinformation



Forschungsprodukte & Biochemikalien



Zellkultur & Verbrauchsmaterial



Diagnostik & molekulare Diagnostik



Laborgeräte & Service

Weitere Information auf den folgenden Seiten!
See the following pages for more information!



Lieferung & Zahlungsart

siehe unsere [Liefer- und Versandbedingungen](#)

Zuschläge

- Mindermengenzuschlag
- Trockeneiszuschlag
- Gefahrgutzuschlag
- Expressversand

SZABO-SCANDIC HandelsgmbH

Quellenstraße 110, A-1100 Wien

T. +43(0)1 489 3961-0

F. +43(0)1 489 3961-7

mail@szabo-scandic.com

www.szabo-scandic.com

[linkedin.com/company/szaboscandic](https://www.linkedin.com/company/szaboscandic) 

SCAP antibody

Cat. No. GTX03796

Host	Rabbit
Clonality	Polyclonal
Isotype	IgG
Application	WB, ICC/IF, IHC-P, FACS
Reactivity	Human, Mouse, Rat

Package
400 µl

APPLICATION

Application Note

*Optimal dilutions/concentrations should be determined by the researcher.

Suggested dilution	Recommended dilution
WB	1:1000
ICC/IF	1:100
IHC-P	1:50-1:100
FACS	1:25

Not tested in other applications.

Calculated MW 140 kDa. ([Note](#))

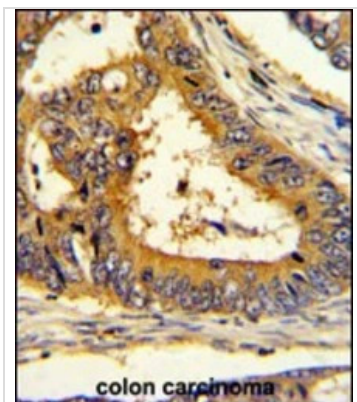
PROPERTIES

Form	Liquid
Buffer	PBS
Preservative	0.09% sodium azide
Storage	Store as concentrated solution. Centrifuge briefly prior to opening vial. For short-term storage (1-2 weeks), store at 4°C. For long-term storage, aliquot and store at -20°C or below. Avoid multiple freeze-thaw cycles.
Concentration	Batch dependent (Please refer to the vial label for the specific concentration.)
Immunogen	This SCAP antibody is generated from rabbits immunized with a KLH conjugated synthetic peptide between 604-632 amino acids from the Central region of human SCAP.
Purification	Protein A purified followed by antigen-affinity chromatography
Conjugation	Unconjugated
Note	For laboratory use only. Not for any clinical, therapeutic, or diagnostic use in humans or animals. Not for animal or human consumption.

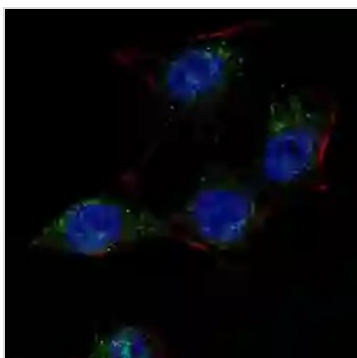


For full product information, images and publications, please visit our [website](#).

DATA IMAGES

**GTX03796 IHC-P Image**

IHC-P analysis of human colon carcinoma tissue using GTX03796 SCAP antibody.

**GTX03796 ICC/IF Image**

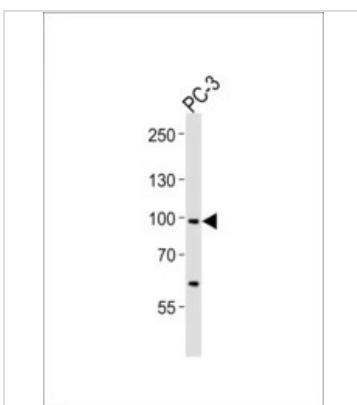
ICC/IF analysis of 4% PFA-fixed HeLa cells using GTX03796 SCAP antibody.

Green : Primary antibody

Blue : Hoechst 33342

Permeabilization : 0.2% Triton X-100, 30 min

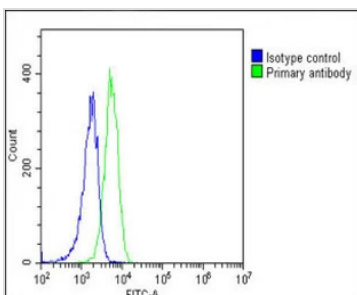
Dilution : 1:100

**GTX03796 WB Image**

WB analysis of PC-3 cell lysate using GTX03796 SCAP antibody.

Loading : 35 μ g

Dilution : 1:1000

**GTX03796 FACS Image**

FACS analysis of 2% paraformaldehyde-fixed K562 cells using GTX03796 SCAP antibody. Acquisition of > 10, 000 events was performed.

Green : Primary antibody

Blue : Isotype control

Permeabilization : 90% methanol for 10 min

Dilution : 1:25



For full product information, images and publications, please visit our [website](#).