



# SZABO SCANDIC

Part of Europa Biosite

## Produktinformation



Forschungsprodukte & Biochemikalien



Zellkultur & Verbrauchsmaterial



Diagnostik & molekulare Diagnostik



Laborgeräte & Service

Weitere Information auf den folgenden Seiten!  
See the following pages for more information!



### Lieferung & Zahlungsart

siehe unsere [Liefer- und Versandbedingungen](#)

### Zuschläge

- Mindermengenzuschlag
- Trockeneiszuschlag
- Gefahrgutzuschlag
- Expressversand

### SZABO-SCANDIC HandelsgmbH

Quellenstraße 110, A-1100 Wien

T. +43(0)1 489 3961-0

F. +43(0)1 489 3961-7

[mail@szabo-scandic.com](mailto:mail@szabo-scandic.com)

[www.szabo-scandic.com](http://www.szabo-scandic.com)

[linkedin.com/company/szaboscandic](https://www.linkedin.com/company/szaboscandic) 

## Human IgG Fc

Cat. No. GTX03802-pro

**Species** Human**Package**  
500 µg

## PRODUCT

**Summary**

Human IgG Fc purified protein is a proteolytic fragment of immunoglobulin G (IgG) obtained by limited digestion with the enzyme papain under controlled conditions of temperature, time and pH. Receptors bind the Fc portion of Human IgG and often this fragment is removed from immunoglobulins to minimize receptor binding and lower background reactivity.

## APPLICATION

**Product Note**

Assay by immunoelectrophoresis resulted in a single precipitin arc against anti-Human Serum, anti-Human IgG and anti-Human IgG F(c). No reaction was observed against anti-Human IgG F(ab')<sub>2</sub> or anti-Papain.

## PROPERTIES

**Form** Liquid**Buffer** 0.02 M Potassium Phosphate, 0.15 M Sodium Chloride pH 7.2,**Preservative** 0.01% sodium azide**Storage**

Store as concentrated solution. Centrifuge briefly prior to opening vial. For short-term storage (1-2 weeks), store at 4°C. For long-term storage, we recommend adding 50% glycerol, then aliquot and store at -20°C or below. Avoid multiple freeze-thaw cycles.

**Concentration** 1 mg/ml (Please refer to the vial label for the specific concentration.)**Expression System** Native Protein**Purification**

Purified by a multi-step process which includes delipidation, salt fractionation, ion exchange chromatography and papain digestion followed by chromatographic separation and extensive dialysis against the buffer stated above  
From serum

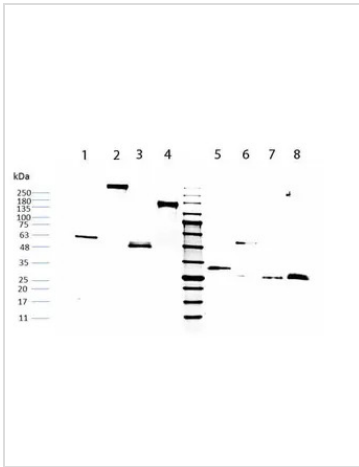
**Conjugation** Unconjugated**Note**

For laboratory use only. Not for any clinical, therapeutic, or diagnostic use in humans or animals. Not for animal or human consumption.



For full product information, images and publications, please visit our [website](#).

DATA IMAGES



**GTX03802-pro Image**

SDS-PAGE of GTX03802-pro Human IgG Fc.  
 Lane 1 : GTX03802-pro (Non-reduced)  
 Lane 2 : Non-reduced Human IgG Whole Molecule  
 Lane 3 : Non-reduced Human IgG Fab Fragment  
 Lane 4 : Non-reduced Human IgG F(ab')<sub>2</sub>  
 Middle Lane : 5µL Pre-stained Marker  
 Lane 5 : GTX03802-pro (Reduced)  
 Lane 6 : Reduced Human IgG Whole Molecule  
 Lane 7 : Reduced Human IgG Fab Fragment  
 Lane 8 : Reduced Human IgG F(ab')<sub>2</sub>  
 Loading : 1µg per lane



**GTX03802-pro Image**

SDS-PAGE of GTX03802-pro Human IgG Fc.  
 Lane 1 : GTX03802-pro (Reduced)  
 Lane 2 : Prestained Molecular Weight Ladder  
 Lane 3 : GTX03802-pro (Non-reduced)



For full product information, images and publications, please visit our [website](http://www.genetex.com).