



SZABO SCANDIC

Part of Europa Biosite

Produktinformation



Forschungsprodukte & Biochemikalien



Zellkultur & Verbrauchsmaterial



Diagnostik & molekulare Diagnostik



Laborgeräte & Service

Weitere Information auf den folgenden Seiten!
See the following pages for more information!



Lieferung & Zahlungsart

siehe unsere [Liefer- und Versandbedingungen](#)

Zuschläge

- Mindermengenzuschlag
- Trockeneiszuschlag
- Gefahrgutzuschlag
- Expressversand

SZABO-SCANDIC HandelsgmbH

Quellenstraße 110, A-1100 Wien

T. +43(0)1 489 3961-0

F. +43(0)1 489 3961-7

mail@szabo-scandic.com

www.szabo-scandic.com

[linkedin.com/company/szaboscandic](https://www.linkedin.com/company/szaboscandic) 

KCC2 antibody [S1-12]

Cat. No. GTX03805

Host	Mouse
Clonality	Monoclonal
Isotype	IgG2a
Application	WB, ICC/IF, IP, IHC
Reactivity	Human, Mouse, Rat

Package
100 µg

APPLICATION

Application Note

*Optimal dilutions/concentrations should be determined by the researcher.

Suggested dilution	Recommended dilution
WB	1:1000
ICC/IF	1:100
IP	Assay dependent
IHC	1:300

Not tested in other applications.

Calculated MW 126 kDa. ([Note](#))

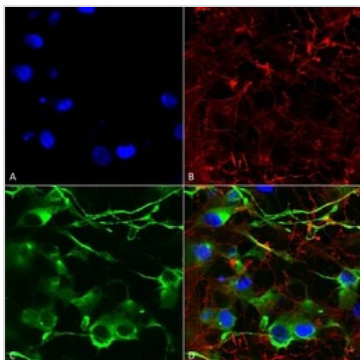
PROPERTIES

Form	Liquid
Buffer	PBS pH7.4, 50% glycerol
Preservative	0.09% sodium azide
Storage	Store as concentrated solution. Centrifuge briefly prior to opening vial. For short-term storage (1-2 weeks), store at 4°C. For long-term storage, aliquot and store at -20°C or below. Avoid multiple freeze-thaw cycles.
Concentration	1 mg/ml (Please refer to the vial label for the specific concentration.)
Immunogen	Fusion protein amino acids 932-1043 corresponding to rat KCC2
Purification	Protein G purified
Conjugation	Unconjugated
Note	For laboratory use only. Not for any clinical, therapeutic, or diagnostic use in humans or animals. Not for animal or human consumption.



For full product information, images and publications, please visit our [website](#).

DATA IMAGES

**GTX03805 ICC/IF Image**

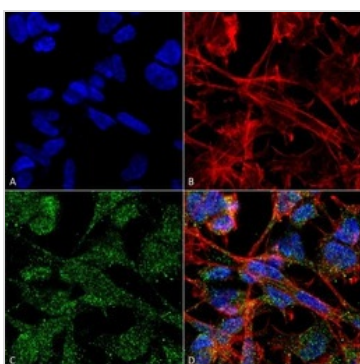
ICC/IF analysis 4% PFA-fixed SH-SY5Y cells using GTX03805 KCC2 antibody [S1-12].

Dilution : 1:200

Green : Primary antibody

Red : F-actin

Blue : Hoechst

**GTX03805 ICC/IF Image**

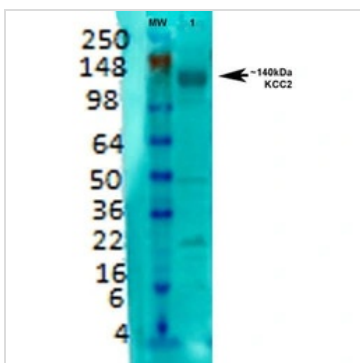
ICC/IF analysis 4% PFA-fixed SK-N-BE cells using GTX03805 KCC2 antibody [S1-12].

Dilution : 1:100

Green : Primary antibody

Red : F-actin

Blue : DAPI

**GTX03805 WB Image**

WB analysis of rat brain membrane lysates using GTX03805 KCC2 antibody [S1-12].

Dilution : 1:1000



For full product information, images and publications, please visit our [website](#).