



# SZABO SCANDIC

Part of Europa Biosite

## Produktinformation



Forschungsprodukte & Biochemikalien



Zellkultur & Verbrauchsmaterial



Diagnostik & molekulare Diagnostik



Laborgeräte & Service

Weitere Information auf den folgenden Seiten!  
See the following pages for more information!



### Lieferung & Zahlungsart

siehe unsere [Liefer- und Versandbedingungen](#)

### Zuschläge

- Mindermengenzuschlag
- Trockeneiszuschlag
- Gefahrgutzuschlag
- Expressversand

### SZABO-SCANDIC HandelsgmbH

Quellenstraße 110, A-1100 Wien

T. +43(0)1 489 3961-0

F. +43(0)1 489 3961-7

[mail@szabo-scandic.com](mailto:mail@szabo-scandic.com)

[www.szabo-scandic.com](http://www.szabo-scandic.com)

[linkedin.com/company/szaboscandic](https://www.linkedin.com/company/szaboscandic) 

## LONP1 antibody

**Cat. No. GTX03806**

<b>Host</b>	Rabbit
<b>Clonality</b>	Polyclonal
<b>Isotype</b>	IgG
<b>Application</b>	WB, ICC/IF, IHC-P, FACS, ELISA
<b>Reactivity</b>	Human, Mouse, Rat

**Package**  
100 µg

## APPLICATION

**Application Note**

\*Optimal dilutions/concentrations should be determined by the researcher.

Suggested dilution	Recommended dilution
WB	0.1-0.5µg/mL
ICC/IF	2µg/mL
IHC-P	0.5-1µg/mL
FACS	1-3µg/1x10 <sup>6</sup> cells
ELISA	0.1-0.5µg/mL

Not tested in other applications.

**Calculated MW** 106 kDa. ([Note](#))

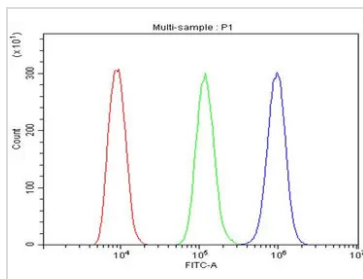
## PROPERTIES

<b>Form</b>	Liquid
<b>Buffer</b>	4mg Trehalose, 0.9mg NaCl, 0.2mg Na <sub>2</sub> HPO <sub>4</sub>
<b>Preservative</b>	0.05mg sodium azide
<b>Storage</b>	Store as concentrated solution. Centrifuge briefly prior to opening vial. For short-term storage (1-2 weeks), store at 4°C. For long-term storage, aliquot and store at -20°C or below. Avoid multiple freeze-thaw cycles.
<b>Concentration</b>	0.5 mg/ml (Please refer to the vial label for the specific concentration.)
<b>Immunogen</b>	E.coli-derived human LONP1/Lon recombinant protein (Position: R137-A320).
<b>Purification</b>	Purified by antigen-affinity chromatography
<b>Conjugation</b>	Unconjugated
<b>Note</b>	For laboratory use only. Not for any clinical, therapeutic, or diagnostic use in humans or animals. Not for animal or human consumption.



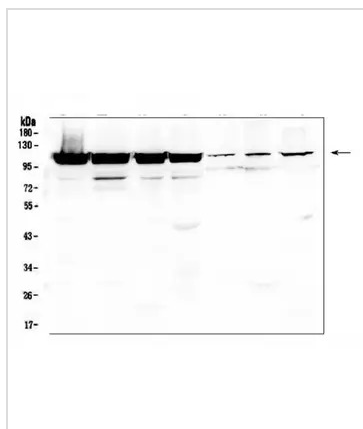
For full product information, images and publications, please visit our [website](#).

DATA IMAGES



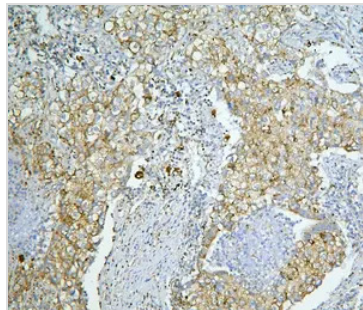
**GTX03806 FACS Image**

FACS analysis of HL-60 cells using GTX03806 LONP1 antibody.  
 Antibody amount : 1µg/1x10<sup>6</sup> cells  
 Blue : Primary antibody  
 Green : Isotype control  
 Red : Unlabelled sample



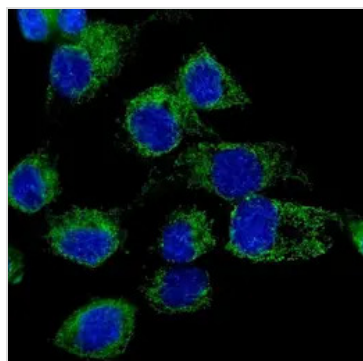
**GTX03806 WB Image**

WB analysis of various sample lysates using GTX03806 LONP1 antibody.  
 Lane 1 : K562 cells  
 Lane 2 : U87-MG cells  
 Lane 3 : PC-3 cells  
 Lane 4 : A549 cells  
 Lane 5 : Mouse liver tissue  
 Lane 6 : Mouse kidney tissue  
 Lane 7 : SP20 cells  
 Dilution : 0.5 µg/mL  
 Loading : 50 µg per lane



**GTX03806 IHC-P Image**

IHC-P analysis of human lung cancer tissue using GTX03806 LONP1 antibody.  
 Antigen retrieval : Heat mediated antigen retrieval was performed in citrate buffer (pH6, epitope retrieval solution) for 20 mins  
 Dilution : 1µg/mL



**GTX03806 ICC/IF Image**

ICC/IF analysis of A431 cells using GTX03806 LONP1 antibody.  
 Antigen retrieval : Enzyme antigen retrieval was performed using enzyme antigen retrieval reagent for 15 mins.  
 Dilution : 2µg/mL



For full product information, images and publications, please visit our [website](#).