



# SZABO SCANDIC

Part of Europa Biosite

## Produktinformation



Forschungsprodukte & Biochemikalien



Zellkultur & Verbrauchsmaterial



Diagnostik & molekulare Diagnostik



Laborgeräte & Service

Weitere Information auf den folgenden Seiten!  
See the following pages for more information!



### Lieferung & Zahlungsart

siehe unsere [Liefer- und Versandbedingungen](#)

### Zuschläge

- Mindermengenzuschlag
- Trockeneiszuschlag
- Gefahrgutzuschlag
- Expressversand

### SZABO-SCANDIC HandelsgmbH

Quellenstraße 110, A-1100 Wien

T. +43(0)1 489 3961-0

F. +43(0)1 489 3961-7

[mail@szabo-scandic.com](mailto:mail@szabo-scandic.com)

[www.szabo-scandic.com](http://www.szabo-scandic.com)

[linkedin.com/company/szaboscandic](https://www.linkedin.com/company/szaboscandic) 

## MLKL antibody

**Cat. No. GTX03807**

<b>Host</b>	Rabbit
<b>Clonality</b>	Polyclonal
<b>Isotype</b>	IgG
<b>Application</b>	WB, IHC-P
<b>Reactivity</b>	Human, Mouse

**Package**  
200 µl

## APPLICATION

**Application Note**

\*Optimal dilutions/concentrations should be determined by the researcher.

Suggested dilution	Recommended dilution
WB	1:1000
IHC-P	1:400

Not tested in other applications.

**Calculated MW** 54 kDa. ([Note](#))

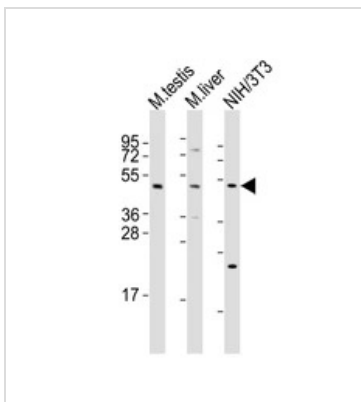
## PROPERTIES

<b>Form</b>	Liquid
<b>Buffer</b>	PBS
<b>Preservative</b>	0.09% sodium azide
<b>Storage</b>	Store as concentrated solution. Centrifuge briefly prior to opening vial. For short-term storage (1-2 weeks), store at 4°C. For long-term storage, aliquot and store at -20°C or below. Avoid multiple freeze-thaw cycles.
<b>Concentration</b>	Batch dependent (Please refer to the vial label for the specific concentration.)
<b>Immunogen</b>	KLH conjugated synthetic peptide between 444-472 amino acids from the C-terminal region of mouse Mlkl.
<b>Purification</b>	Protein A purified followed by antigen-affinity chromatography
<b>Conjugation</b>	Unconjugated
<b>Note</b>	For laboratory use only. Not for any clinical, therapeutic, or diagnostic use in humans or animals. Not for animal or human consumption.



For full product information, images and publications, please visit our [website](#).

DATA IMAGES



**GTX03807 WB Image**

WB analysis of various sample lysates using GTX03807 MLKL antibody.

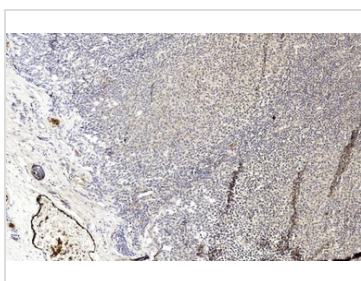
Lane 1 : mouse testis

Lane 2 : mouse liver

Lane3 : NIH-3T3

Dilution : 1:2000

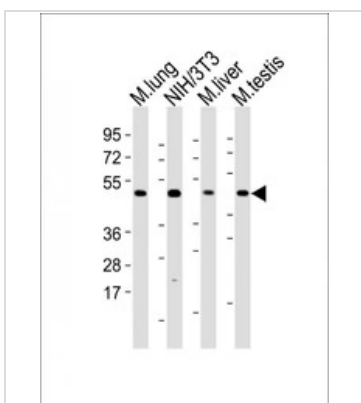
Loading : 20 µg per lane



**GTX03807 IHC-P Image**

IHC-P analysis of human tonsil tissue section using GTX03807 MLKL antibody.

Dilution : 1:400



**GTX03807 WB Image**

WB analysis of various sample lysates using GTX03807 MLKL antibody.

Lane 1 : mouse lung

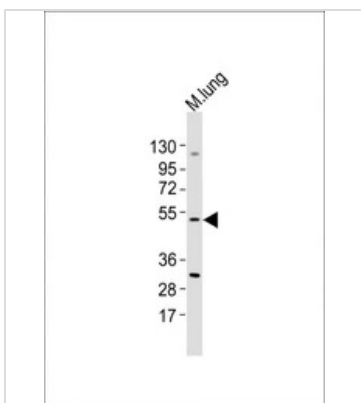
Lane 2 : NIH/3T3

Lane 3 : mouse liver

Lane 4 : mouse testis

Dilution : 1:2000

Loading : 20 µg per lane



**GTX03807 WB Image**

WB analysis of mouse lung tissue lysates using GTX03807 MLKL antibody

Dilution : 1:1000

Loading : 20 µg per lane



For full product information, images and publications, please visit our [website](#).