



# SZABO SCANDIC

Part of Europa Biosite

## Produktinformation



Forschungsprodukte & Biochemikalien



Zellkultur & Verbrauchsmaterial



Diagnostik & molekulare Diagnostik



Laborgeräte & Service

Weitere Information auf den folgenden Seiten!  
See the following pages for more information!



### Lieferung & Zahlungsart

siehe unsere [Liefer- und Versandbedingungen](#)

### Zuschläge

- Mindermengenzuschlag
- Trockeneiszuschlag
- Gefahrgutzuschlag
- Expressversand

### SZABO-SCANDIC HandelsgmbH

Quellenstraße 110, A-1100 Wien

T. +43(0)1 489 3961-0

F. +43(0)1 489 3961-7

[mail@szabo-scandic.com](mailto:mail@szabo-scandic.com)

[www.szabo-scandic.com](http://www.szabo-scandic.com)

[linkedin.com/company/szaboscandic](https://www.linkedin.com/company/szaboscandic) 

## proBDNF antibody

**Cat. No. GTX04075**

<b>Host</b>	Rabbit
<b>Clonality</b>	Polyclonal
<b>Isotype</b>	IgG
<b>Application</b>	WB, IHC-Fr, IP
<b>Reactivity</b>	Human, Mouse, Rat

**Package**  
50 µl

## APPLICATION

**Application Note**

\*Optimal dilutions/concentrations should be determined by the researcher.

Suggested dilution	Recommended dilution
WB	Assay dependent
IHC-Fr	Assay dependent
IP	Assay dependent

Not tested in other applications.

**Calculated MW** 28 kDa. ([Note](#))

**Product Note** The antibody is specific for proBDNF, it does not crossreact with proNGF, proNT-3 or mature BDNF.

## PROPERTIES

<b>Form</b>	Liquid
<b>Buffer</b>	PBS pH 7.4, 1% BSA
<b>Preservative</b>	0.05% sodium azide
<b>Storage</b>	Store as concentrated solution. Centrifuge briefly prior to opening vial. For short-term storage (1-2 weeks), store at 4°C. For long-term storage, aliquot and store at -20°C or below. Avoid multiple freeze-thaw cycles.
<b>Concentration</b>	0.8 mg/ml (Please refer to the vial label for the specific concentration.)
<b>Immunogen</b>	Peptide (C)DEDQKVRPNEENNKDAD, corresponding to amino acid residues 72-88 of human BDNF (precursor) (Accession P23560). Pro-domain of the BDNF protein.
<b>Purification</b>	Purified by antigen-affinity chromatography
<b>Conjugation</b>	Unconjugated



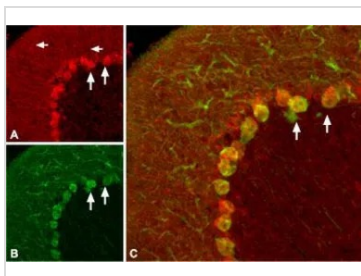
For full product information, images and publications, please visit our [website](#).

For laboratory research use only. Not for any clinical, therapeutic, or diagnostic use in humans or animals. Not for animal or human consumption.

**Note**

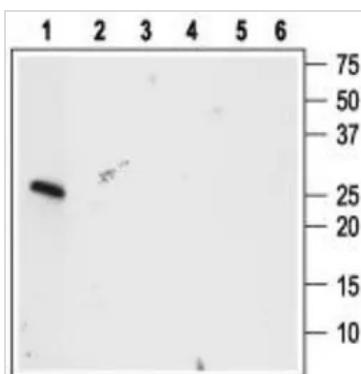
Purchasers shall not, and agree not to enable third parties to, analyze, copy, reverse engineer or otherwise attempt to determine the structure or sequence of the product.

DATA IMAGES



**GTX04075 IHC-Fr Image**

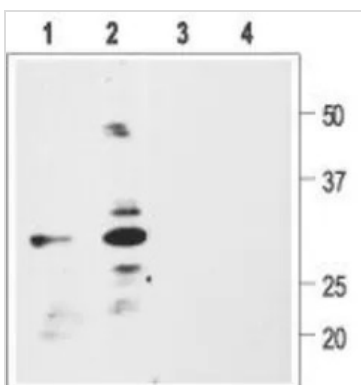
IHC-Fr analysis of rat cerebellum tissue using GTX04075 proBDNF antibody. proBDNF (Red) appears in Purkinje cell bodies (vertical arrows) and in astrocytic processes (horizontal arrows in panel A) but not in Purkinje neuronal dendrites stained for calbindin D28k (Green, in panel B) in the same brain section.



**GTX04075 WB Image**

WB analysis of recombinant proteins using GTX04075 proBDNF antibody.

- Lane 1 : 20 ng Human proBDNF
  - Lane 2 : 200 ng Human proNGF
  - Lane 3 : 200 ng proNT-3
  - Lane 4 : 200 ng Human BDNF
  - Lane 5 : 200 ng Native mouse NGF 2.5S protein
  - Lane 6 : 200 ng Human Neurotrophin-3 (NT-3)
- Dilution : 1:400



**GTX04075 WB Image**

WB analysis of various cell lysates using GTX04075 proBDNF antibody.

- Lane 1 : C6 cell lysates
  - Lane 2 : SH-SY5Y cell lysates
  - Lane 3 : C6 cell lysates treated with blocking peptide
  - Lane 4 : SH-SY5Y cell lysates treated with blocking peptide
- Dilution : 1:200



For full product information, images and publications, please visit our [website](#).