



# SZABO SCANDIC

Part of Europa Biosite

## Produktinformation



Forschungsprodukte & Biochemikalien



Zellkultur & Verbrauchsmaterial



Diagnostik & molekulare Diagnostik



Laborgeräte & Service

Weitere Information auf den folgenden Seiten!  
See the following pages for more information!



### Lieferung & Zahlungsart

siehe unsere [Liefer- und Versandbedingungen](#)

### Zuschläge

- Mindermengenzuschlag
- Trockeneiszuschlag
- Gefahrgutzuschlag
- Expressversand

### SZABO-SCANDIC HandelsgmbH

Quellenstraße 110, A-1100 Wien

T. +43(0)1 489 3961-0

F. +43(0)1 489 3961-7

[mail@szabo-scandic.com](mailto:mail@szabo-scandic.com)

[www.szabo-scandic.com](http://www.szabo-scandic.com)

[linkedin.com/company/szaboscandic](https://www.linkedin.com/company/szaboscandic) 

## BNP antibody [24C5]

Cat. No. GTX04088

<b>Host</b>	Mouse
<b>Clonality</b>	Monoclonal
<b>Isotype</b>	IgG1
<b>Application</b>	WB, ELISA, Sandwich ELISA
<b>Reactivity</b>	Human

Package  
100 µg

## APPLICATION

## Application Note

\*Optimal dilutions/concentrations should be determined by the researcher.

Suggested dilution	Recommended dilution
WB	Assay dependent
ELISA	Assay dependent
Sandwich ELISA	Assay dependent

**Note : Capture : GTX40984, Detection : GTX04088, Sensitivity of this antibody pair is better than 1 pg/ml (synthetic BNP, Bachem). All pairs recognize with high sensitivity the antigen in plasma samples of patients with heart failure. The detection antibody requires HRP conjugation. Please contact us for the conjugation service.**

Not tested in other applications.

<b>Calculated MW</b>	15 kDa. ( <a href="#">Note</a> )
<b>Product Note</b>	Human BNP and proBNP.

## PROPERTIES

<b>Form</b>	Liquid
<b>Buffer</b>	PBS
<b>Preservative</b>	0.09% sodium azide
<b>Storage</b>	Store as concentrated solution. Centrifuge briefly prior to opening vial. Store at 4°C.
<b>Concentration</b>	Batch dependent (Please refer to the vial label for the specific concentration.)
<b>Immunogen</b>	Synthetic human BNP peptide a.a.r. 11-22 conjugated with carrier protein.
<b>Purification</b>	Protein A purified
<b>Conjugation</b>	Unconjugated



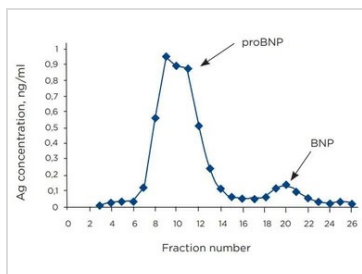
For full product information, images and publications, please visit our [website](#).

For laboratory research use only. Not for any clinical, therapeutic, or diagnostic use in humans or animals. Not for animal or human consumption.

**Note**

Purchasers shall not, and agree not to enable third parties to, analyze, copy, reverse engineer or otherwise attempt to determine the structure or sequence of the product.

## DATA IMAGES

**GTX04088 ELISA Image**

ELISA analysis of endogenous proBNP and BNP using GTX04088 BNP antibody [24C5]. Gel filtration studies of endogenous proBNP and BNP. Proteins from one representative plasma sample of a HF patient were separated on the Superdex Peptide column (GE Healthcare). BNP immunoreactivity in fractions was measured by the 50E1-24C5 assay. The first peak corresponds to proBNP, while the second peak corresponds to the BNP form.



For full product information, images and publications, please visit our [website](#).