



SZABO SCANDIC

Part of Europa Biosite

Produktinformation



Forschungsprodukte & Biochemikalien



Zellkultur & Verbrauchsmaterial



Diagnostik & molekulare Diagnostik



Laborgeräte & Service

Weitere Information auf den folgenden Seiten!
See the following pages for more information!



Lieferung & Zahlungsart

siehe unsere [Liefer- und Versandbedingungen](#)

Zuschläge

- Mindermengenzuschlag
- Trockeneiszuschlag
- Gefahrgutzuschlag
- Expressversand

SZABO-SCANDIC HandelsgmbH

Quellenstraße 110, A-1100 Wien

T. +43(0)1 489 3961-0

F. +43(0)1 489 3961-7

mail@szabo-scandic.com

www.szabo-scandic.com

[linkedin.com/company/szaboscandic](https://www.linkedin.com/company/szaboscandic) 

TMEM166 antibody

Cat. No. GTX04091

Host	Rabbit
Clonality	Polyclonal
Isotype	IgG
Application	WB, ICC/IF, IHC-P, FACS
Reactivity	Human, Mouse, Rat

Package
100 µg

APPLICATION

Application Note

*Optimal dilutions/concentrations should be determined by the researcher.

Suggested dilution	Recommended dilution
WB	Assay dependent
ICC/IF	Assay dependent
IHC-P	Assay dependent
FACS	Assay dependent

Not tested in other applications.

Calculated MW 17 kDa. ([Note](#))

PROPERTIES

Form	Liquid
Buffer	4mg Trehalose, 0.9mg NaCl, 0.2mg Na ₂ HPO ₄
Preservative	0.05mg sodium azide
Storage	Store as concentrated solution. Centrifuge briefly prior to opening vial. For short-term storage (1-2 weeks), store at 4°C. For long-term storage, aliquot and store at -20°C or below. Avoid multiple freeze-thaw cycles.
Concentration	.5 mg/ml (Please refer to the vial label for the specific concentration.)
Immunogen	A synthetic peptide corresponding to a sequence of human TMEM166/EVA1A (MRLPLSHSPEHVEMALLSNILAAYSFVSENPERA).
Purification	Purified by affinity chromatography
Conjugation	Unconjugated



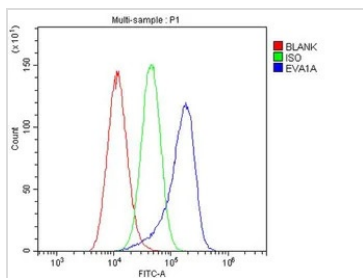
For full product information, images and publications, please visit our [website](#).

For laboratory research use only. Not for any clinical, therapeutic, or diagnostic use in humans or animals. Not for animal or human consumption.

Note

Purchasers shall not, and agree not to enable third parties to, analyze, copy, reverse engineer or otherwise attempt to determine the structure or sequence of the product.

DATA IMAGES



GTX04091 FACS Image

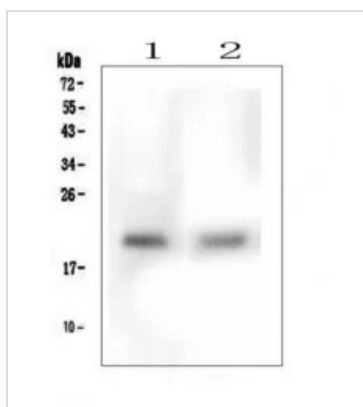
FACS analysis of A549 cells using GTX04091 TMEM166 antibody.

Dilution : 1µg/1x10⁶

Blue : Primary antibody

Green : Isotype control

Red : Unlabelled sample



GTX04091 WB Image

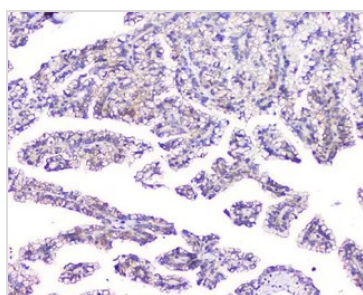
WB analysis of various cell lysates using GTX04091 TMEM166 antibody.

Lane 1 : HepG2 cells

Lane 2 : PC-3 cells

Loading : 50 µg

Dilution : 0.5 µg/mL



GTX04091 IHC-P Image

IHC-P analysis of human renal cancer tissue using GTX04091 TMEM166 antibody.

Antigen retrieval : Heat mediated antigen retrieval in citrate buffer (pH6, epitope retrieval solution) for 20 mins

Dilution : 1 µg/mL



For full product information, images and publications, please visit our [website](#).