



SZABO SCANDIC

Part of Europa Biosite

Produktinformation



Forschungsprodukte & Biochemikalien



Zellkultur & Verbrauchsmaterial



Diagnostik & molekulare Diagnostik



Laborgeräte & Service

Weitere Information auf den folgenden Seiten!
See the following pages for more information!



Lieferung & Zahlungsart

siehe unsere [Liefer- und Versandbedingungen](#)

Zuschläge

- Mindermengenzuschlag
- Trockeneiszuschlag
- Gefahrgutzuschlag
- Expressversand

SZABO-SCANDIC HandelsgmbH

Quellenstraße 110, A-1100 Wien

T. +43(0)1 489 3961-0

F. +43(0)1 489 3961-7

mail@szabo-scandic.com

www.szabo-scandic.com

[linkedin.com/company/szaboscandic](https://www.linkedin.com/company/szaboscandic) 

CXCR5 antibody

Cat. No. GTX04093

Host	Rabbit
Clonality	Polyclonal
Isotype	IgG
Application	WB, FACS, ELISA
Reactivity	Human, Mouse, Rat

Package
100 µg

APPLICATION

Application Note

*Optimal dilutions/concentrations should be determined by the researcher.

Suggested dilution	Recommended dilution
WB	0.25-0.5 µg/mL
FACS	1-3 µg/1x10 ⁶ cells
ELISA	0.1-0.5 µg/mL

Not tested in other applications.

Calculated MW 42 kDa. ([Note](#))

PROPERTIES

Form	Liquid
Buffer	4 mg Trehalose, 0.9 mg NaCl, 0.2 mg Na ₂ HPO ₄
Preservative	No preservatives
Storage	Store as concentrated solution. Centrifuge briefly prior to opening vial. For short-term storage (1-2 weeks), store at 4°C. For long-term storage, aliquot and store at -20°C or below. Avoid multiple freeze-thaw cycles.
Concentration	.5 mg/ml (Please refer to the vial label for the specific concentration.)
Immunogen	E.coli-derived human CXCR5 recombinant protein (Position: A181-S358).
Purification	Purified by antigen-affinity chromatography
Conjugation	Unconjugated

Note

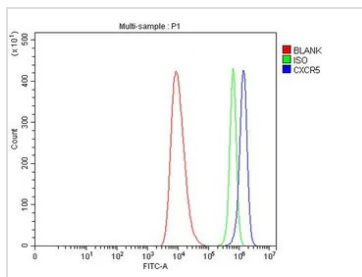
For laboratory research use only. Not for any clinical, therapeutic, or diagnostic use in humans or animals. Not for animal or human consumption.

Purchasers shall not, and agree not to enable third parties to, analyze, copy, reverse engineer or otherwise attempt to determine the structure or sequence of the product.



For full product information, images and publications, please visit our [website](#).

DATA IMAGES



GTX04093 FACS Image

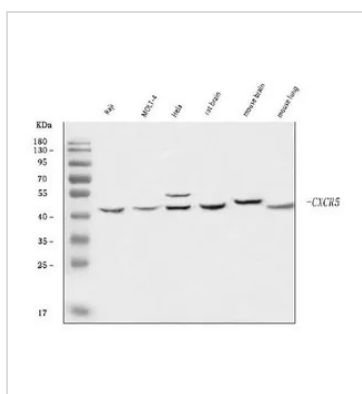
FACS analysis of HEL cells using GTX04093 CXCR5 antibody.

Dilution : 1 µg/1x10⁶

Blue : Primary antibody

Green : Isotype control

Red : Unlabelled sample



GTX04093 WB Image

WB analysis of various cell lysates using GTX04093 CXCR5 antibody.

Lane 1 : Raji cell lysates

Lane 2 : MOLT-4 cell lysates

Lane 3 : HeLa cell lysates

Lane 4 : rat brain tissue lysates

Lane 5 : mouse brain tissue lysates

Lane 6 : mouse lung tissue lysates

Dilution : 0.5 µg/mL

Loading : 30 µg



For full product information, images and publications, please visit our [website](#).