



# SZABO SCANDIC

Part of Europa Biosite

## Produktinformation



Forschungsprodukte & Biochemikalien



Zellkultur & Verbrauchsmaterial



Diagnostik & molekulare Diagnostik



Laborgeräte & Service

Weitere Information auf den folgenden Seiten!  
See the following pages for more information!



### Lieferung & Zahlungsart

siehe unsere [Liefer- und Versandbedingungen](#)

### Zuschläge

- Mindermengenzuschlag
- Trockeneiszuschlag
- Gefahrgutzuschlag
- Expressversand

### SZABO-SCANDIC HandelsgmbH

Quellenstraße 110, A-1100 Wien

T. +43(0)1 489 3961-0

F. +43(0)1 489 3961-7

[mail@szabo-scandic.com](mailto:mail@szabo-scandic.com)

[www.szabo-scandic.com](http://www.szabo-scandic.com)

[linkedin.com/company/szaboscandic](https://www.linkedin.com/company/szaboscandic) 

## PTP1B antibody

Cat. No. GTX04098

Host	Rabbit
Clonality	Polyclonal
Isotype	IgG
Application	WB, IHC-P, IHC-Fr, FACS
Reactivity	Human, Mouse, Rat

Package  
100 µg

## APPLICATION

## Application Note

\*Optimal dilutions/concentrations should be determined by the researcher.

Suggested dilution	Recommended dilution
WB	0.1-0.5µg/ml
IHC-P	0.5-1µg/ml
IHC-Fr	0.5-1µg/ml
FACS	1-3µg/10 <sup>6</sup> cells

## Note : Antigen retrieval by heat

Not tested in other applications.

Calculated MW 50 kDa. ([Note](#))

## PROPERTIES

Form	Liquid
Buffer	4 mg Trehalose, 0.9 mg NaCl, 0.2 mg Na <sub>2</sub> HPO <sub>4</sub>
Preservative	0.05 mg sodium azide
Storage	Store as concentrated solution. Centrifuge briefly prior to opening vial. For short-term storage (1-2 weeks), store at 4°C. For long-term storage, aliquot and store at -20°C or below. Avoid multiple freeze-thaw cycles.
Concentration	0.5 mg/ml (Please refer to the vial label for the specific concentration.)
Immunogen	A synthetic peptide corresponding to a sequence at the N-terminus of human PTP1B (4-30aa EKEFEQIDKSGSWAAIYQDIRHEASDF), different from the related mouse sequence by three amino acids, and from the related rat sequence by two amino acids.
Purification	Purified by antigen-affinity chromatography
Conjugation	Unconjugated



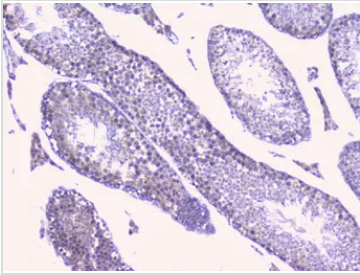
For full product information, images and publications, please visit our [website](#).

For laboratory research use only. Not for any clinical, therapeutic, or diagnostic use in humans or animals. Not for animal or human consumption.

**Note**

Purchasers shall not, and agree not to enable third parties to, analyze, copy, reverse engineer or otherwise attempt to determine the structure or sequence of the product.

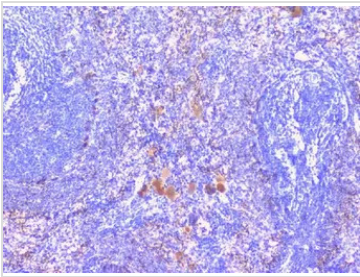
## DATA IMAGES

**GTX04098 IHC-P Image**

IHC-P analysis of mouse testis tissues using GTX04098 PTP1B antibody.

Dilution : 1 µg/ml

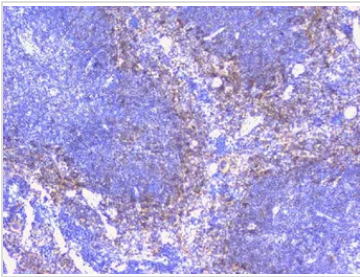
Antigen retrieval : Heat mediated antigen retrieval was performed in citrate buffer (pH 6, epitope retrieval solution) for 20 mins

**GTX04098 IHC-P Image**

IHC-P analysis of rat spleen tissues using GTX04098 PTP1B antibody.

Dilution : 1 µg/ml

Antigen retrieval : Heat mediated antigen retrieval was performed in citrate buffer (pH 6, epitope retrieval solution) for 20 mins

**GTX04098 IHC-P Image**

IHC-P analysis of mouse spleen tissues using GTX04098 PTP1B antibody.

Dilution : 1 µg/ml

Antigen retrieval : Heat mediated antigen retrieval was performed in citrate buffer (pH 6, epitope retrieval solution) for 20 mins



For full product information, images and publications, please visit our [website](#).