



SZABO SCANDIC

Part of Europa Biosite

Produktinformation



Forschungsprodukte & Biochemikalien



Zellkultur & Verbrauchsmaterial



Diagnostik & molekulare Diagnostik



Laborgeräte & Service

Weitere Information auf den folgenden Seiten!
See the following pages for more information!



Lieferung & Zahlungsart

siehe unsere [Liefer- und Versandbedingungen](#)

Zuschläge

- Mindermengenzuschlag
- Trockeneiszuschlag
- Gefahrgutzuschlag
- Expressversand

SZABO-SCANDIC HandelsgmbH

Quellenstraße 110, A-1100 Wien

T. +43(0)1 489 3961-0

F. +43(0)1 489 3961-7

mail@szabo-scandic.com

www.szabo-scandic.com

[linkedin.com/company/szaboscandic](https://www.linkedin.com/company/szaboscandic) 

CCR2 antibody

Cat. No. GTX04115

Host	Rabbit
Clonality	Polyclonal
Isotype	IgG
Application	WB, IHC-P
Reactivity	Human, Mouse, Rat

Package
100 µl

APPLICATION

Application Note

*Optimal dilutions/concentrations should be determined by the researcher.

Suggested dilution	Recommended dilution
WB	1:500-1:2000
IHC-P	1:50-1:200

Not tested in other applications.

Calculated MW 42 kDa. ([Note](#))

Product Note We do not recommend use of this product for Rabbit, Sheep, Bovine, Dog, Pig, Horse samples.

PROPERTIES

Form	Liquid
Buffer	PBS pH 7.4, 150 mM NaCl, 50% glycerol
Preservative	0.02% sodium azide
Storage	Store as concentrated solution. Centrifuge briefly prior to opening vial. For short-term storage (1-2 weeks), store at 4°C. For long-term storage, aliquot and store at -20°C or below. Avoid multiple freeze-thaw cycles.
Concentration	1 mg/ml (Please refer to the vial label for the specific concentration.)
Immunogen	A synthesized peptide derived from human CCR2 (Accession P41597), corresponding to amino acid residues N110-L134.
Purification	Purified by antigen-affinity chromatography From serum
Conjugation	Unconjugated

Note

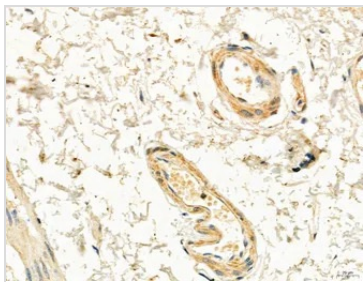
For laboratory research use only. Not for any clinical, therapeutic, or diagnostic use in humans or animals. Not for animal or human consumption.

Purchasers shall not, and agree not to enable third parties to, analyze, copy, reverse engineer or otherwise attempt to determine the structure or sequence of the product.



For full product information, images and publications, please visit our [website](#).

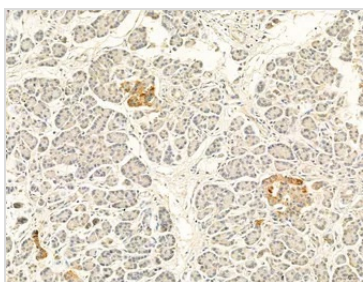
DATA IMAGES

**GTX04115 IHC-P Image**

IHC-P analysis of human normal tissues adjacent to esophageal cancer using GTX04115 CCR2 antibody.

Antigen retrieval : Heat mediated antigen retrieval step in citrate buffer was performed

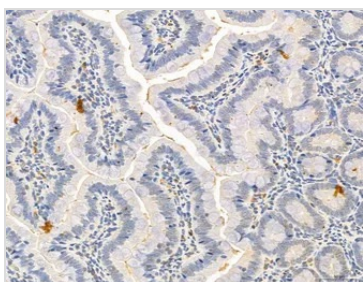
Dilution : 1:100

**GTX04115 IHC-P Image**

IHC-P analysis of human normal tissues adjacent to pancreatic cancer using GTX04115 CCR2 antibody.

Antigen retrieval : Heat mediated antigen retrieval step in citrate buffer was performed

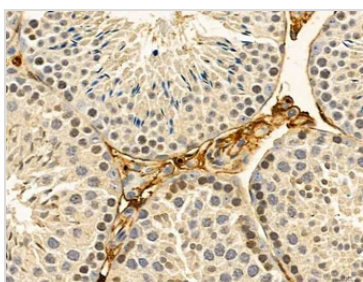
Dilution : 1:100

**GTX04115 IHC-P Image**

IHC-P analysis of rat colon tissue using GTX04115 CCR2 antibody.

Antigen retrieval : Heat mediated antigen retrieval step in citrate buffer was performed

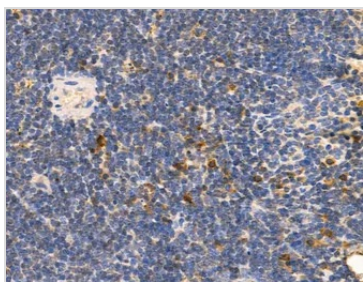
Dilution : 1:100

**GTX04115 IHC-P Image**

IHC-P analysis of mouse testis tissue using GTX04115 CCR2 antibody.

Antigen retrieval : Heat mediated antigen retrieval step in citrate buffer was performed

Dilution : 1:100

**GTX04115 IHC-P Image**

IHC-P analysis of mouse spleen tissue using GTX04115 CCR2 antibody.

Antigen retrieval : Heat mediated antigen retrieval step in citrate buffer was performed

Dilution : 1:100



For full product information, images and publications, please visit our [website](#).