



SZABO SCANDIC

Part of Europa Biosite

Produktinformation



Forschungsprodukte & Biochemikalien



Zellkultur & Verbrauchsmaterial



Diagnostik & molekulare Diagnostik



Laborgeräte & Service

Weitere Information auf den folgenden Seiten!
See the following pages for more information!



Lieferung & Zahlungsart

siehe unsere [Liefer- und Versandbedingungen](#)

Zuschläge

- Mindermengenzuschlag
- Trockeneiszuschlag
- Gefahrgutzuschlag
- Expressversand

SZABO-SCANDIC HandelsgmbH

Quellenstraße 110, A-1100 Wien

T. +43(0)1 489 3961-0

F. +43(0)1 489 3961-7

mail@szabo-scandic.com

www.szabo-scandic.com

[linkedin.com/company/szaboscandic](https://www.linkedin.com/company/szaboscandic)

Goat Anti-Human IgM (Mu chain) antibody, F(ab')₂ fragment, pre-adsorbed (PE)

Cat. No. GTX04121-08

Host	Goat
Clonality	Polyclonal
Isotype	IgG F(ab') ₂
Application	ICC/IF, FACS, ELISA, Activation, ELISPOT
Reactivity	Human

Package

250 µg

APPLICATION

Application Note

*Optimal dilutions/concentrations should be determined by the researcher.

Suggested dilution	Recommended dilution
ICC/IF	Assay dependent
FACS	≤ 0.1 µg/10 ⁶ cells
ELISA	≤ 1 µg/mL
Activation	Assay dependent
ELISPOT	Assay dependent

Note : The suggested use of these reagents is in a final volume of 100µl.

Not tested in other applications.

Product Note Pre-adsorbed with Human IgG and IgA. May react with IgM from other species.

PROPERTIES

Form	Liquid
Buffer	PBS, a stabilizer
Preservative	0.09% sodium azide
Storage	Store as concentrated solution. Centrifuge briefly prior to opening vial. Store at 4°C. DO NOT FREEZE. Protect from light.
Concentration	0.25 mg/ml (Please refer to the vial label for the specific concentration.)
Immunogen	Pepsin digest of Goat Anti-Human IgM.
Purification	Purified IgG
Conjugation	Phycoerythrin (PE)

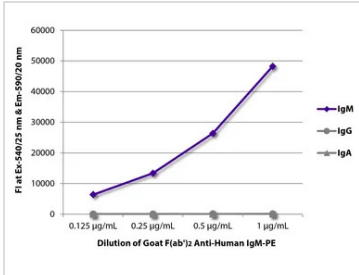


For full product information, images and publications, please visit our [website](#).

For laboratory research use only. Not for any clinical, therapeutic, or diagnostic use in humans or animals. Not for animal or human consumption.

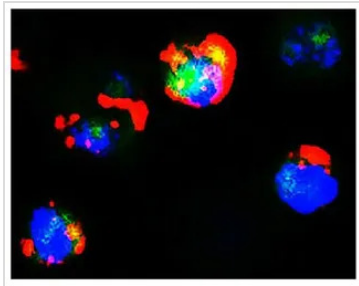
Note
 Purchasers shall not, and agree not to enable third parties to, analyze, copy, reverse engineer or otherwise attempt to determine the structure or sequence of the product.

DATA IMAGES



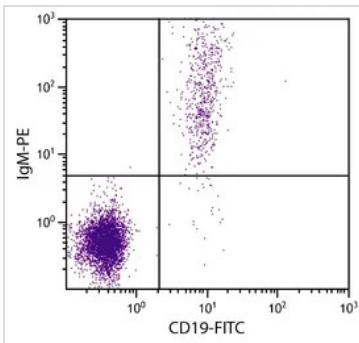
GTX04121-08 ELISA Image

ELISA analysis of purified human immunoglobulins using serially diluted GTX04121-08 Goat Anti-Human IgM (Mu chain) antibody, F(ab')₂ fragment, pre-adsorbed (PE).



GTX04121-08 ICC/IF Image

ICC/IF analysis of GFP+ hFCMR-transfected cells lysates using GTX04121-08 Goat Anti-Human IgM (Mu chain) antibody, F(ab')₂ fragment, pre-adsorbed (PE). Blue : DAPI



GTX04121-08 FACS Image

FACS analysis of human peripheral blood lymphocytes using Mouse Anti-Human CD19 antibody (FITC) and GTX04121-08 Goat Anti-Human IgM (Mu chain) antibody, F(ab')₂ fragment, pre-adsorbed (PE).



For full product information, images and publications, please visit our [website](#).