



SZABO SCANDIC

Part of Europa Biosite

Produktinformation



Forschungsprodukte & Biochemikalien



Zellkultur & Verbrauchsmaterial



Diagnostik & molekulare Diagnostik



Laborgeräte & Service

Weitere Information auf den folgenden Seiten!
See the following pages for more information!



Lieferung & Zahlungsart

siehe unsere [Liefer- und Versandbedingungen](#)

Zuschläge

- Mindermengenzuschlag
- Trockeneiszuschlag
- Gefahrgutzuschlag
- Expressversand

SZABO-SCANDIC HandelsgmbH

Quellenstraße 110, A-1100 Wien

T. +43(0)1 489 3961-0

F. +43(0)1 489 3961-7

mail@szabo-scandic.com

www.szabo-scandic.com

[linkedin.com/company/szaboscandic](https://www.linkedin.com/company/szaboscandic) 

Goat Anti-Human IgD (Heavy chain) antibody, pre-adsorbed (Biotin)

Cat. No. GTX04123-02

Host	Goat
Clonality	Polyclonal
Isotype	IgG
Application	IHC-P, IHC-Fr, FACS, ELISA
Reactivity	Human

Package
1 mg

APPLICATION

Application Note

*Optimal dilutions/concentrations should be determined by the researcher.

Suggested dilution	Recommended dilution
IHC-P	Assay dependent
IHC-Fr	Assay dependent
FACS	$\leq 1 \mu\text{g}/10^6\text{cells}$
ELISA	1:5000-1:20000

Note : The suggested use of these reagents is in a final volume of 100 μl .

Not tested in other applications.

Product Note Pre-adsorbed with Human IgG, IgM, and IgA. May react with IgD from other species.

PROPERTIES

Form	Liquid
Buffer	PBS
Preservative	0.09% sodium azide
Storage	Store as concentrated solution. Centrifuge briefly prior to opening vial. Store at 4°C.
Concentration	0.5 mg/ml (Please refer to the vial label for the specific concentration.)
Immunogen	Pooled antisera from goats hyperimmunized with human IgD
Purification	Purified by antigen-affinity chromatography
Conjugation	Biotin

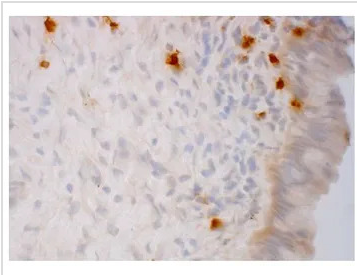


For full product information, images and publications, please visit our [website](#).

For laboratory research use only. Not for any clinical, therapeutic, or diagnostic use in humans or animals. Not for animal or human consumption.

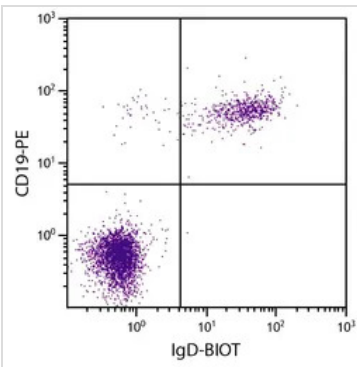
Note
 Purchasers shall not, and agree not to enable third parties to, analyze, copy, reverse engineer or otherwise attempt to determine the structure or sequence of the product.

DATA IMAGES



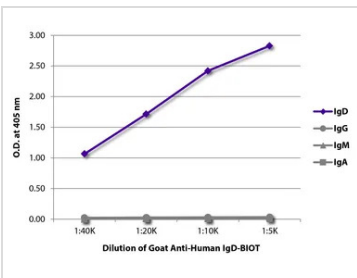
GTX04123-02 IHC-Fr Image

IHC-Fr analysis of human endocervical tissue using GTX04123-02 Goat Anti-Human IgD (Heavy chain) antibody, pre-adsorbed (Biotin).



GTX04123-02 FACS Image

FACS analysis of human peripheral blood lymphocytes using Mouse Anti-Human CD19 antibody (PE) GTX04123-02 Goat Anti-Human IgD (Heavy chain) antibody, pre-adsorbed (Biotin) followed by Streptavidin (FITC).



GTX04123-02 ELISA Image

ELISA analysis of purified human immunoglobulins using serially diluted GTX04123-02 Goat Anti-Human IgD (Heavy chain) antibody, pre-adsorbed (Biotin). followed by Streptavidin (HRP).



For full product information, images and publications, please visit our [website](#).