



SZABO SCANDIC

Part of Europa Biosite

Produktinformation



Forschungsprodukte & Biochemikalien



Zellkultur & Verbrauchsmaterial



Diagnostik & molekulare Diagnostik



Laborgeräte & Service

Weitere Information auf den folgenden Seiten!
See the following pages for more information!



Lieferung & Zahlungsart

siehe unsere [Liefer- und Versandbedingungen](#)

Zuschläge

- Mindermengenzuschlag
- Trockeneiszuschlag
- Gefahrgutzuschlag
- Expressversand

SZABO-SCANDIC HandelsgmbH

Quellenstraße 110, A-1100 Wien

T. +43(0)1 489 3961-0

F. +43(0)1 489 3961-7

mail@szabo-scandic.com

www.szabo-scandic.com

[linkedin.com/company/szaboscandic](https://www.linkedin.com/company/szaboscandic) 

Goat Anti-Human IgA (Heavy chain) antibody, pre-adsorbed (TRITC)

Cat. No. GTX04126-25

Host	Goat
Clonality	Polyclonal
Isotype	IgG
Application	WB, ICC/IF, IHC-P, IHC-Fr, FACS, IP, ELISA, Depletion, ELISPOT, Multiplexing, Purification
Reactivity	Human

Package

1 mg

APPLICATION

Application Note

*Optimal dilutions/concentrations should be determined by the researcher.

Suggested dilution	Recommended dilution
WB	Assay dependent
ICC/IF	Assay dependent
IHC-P	Assay dependent
IHC-Fr	Assay dependent
FACS	Assay dependent
IP	Assay dependent
ELISA	1:100-1:400
Depletion	Assay dependent
ELISPOT	Assay dependent
Multiplexing	Assay dependent
Purification	Assay dependent

Not tested in other applications.

Product Note Pre-adsorbed with Human IgG and IgM. May react with IgA from other species.

PROPERTIES

Form	Liquid
Buffer	PBS
Preservative	0.09% sodium azide
Storage	Store as concentrated solution. Centrifuge briefly prior to opening vial. Store at 4°C. Protect from light.
Concentration	1 mg/ml (Please refer to the vial label for the specific concentration.)



For full product information, images and publications, please visit our [website](#).

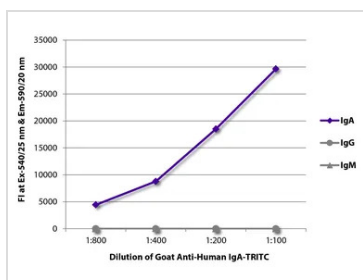
Immunogen	Pooled antisera from goats hyperimmunized with human IgA
Purification	Purified by antigen-affinity chromatography
Conjugation	Tetramethylrhodamine (TRITC)

For laboratory research use only. Not for any clinical, therapeutic, or diagnostic use in humans or animals. Not for animal or human consumption.

Note

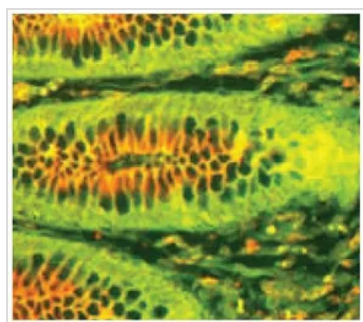
Purchasers shall not, and agree not to enable third parties to, analyze, copy, reverse engineer or otherwise attempt to determine the structure or sequence of the product.

DATA IMAGES



GTX04126-25 ELISA Image

ELISA analysis of purified human immunoglobulins using serially diluted GTX04126-25 Goat Anti-Human IgA (Heavy chain) antibody, pre-adsorbed (TRITC).



GTX04126-25 IHC-P Image

IHC-P analysis of human intestinal epithelium tissue using secretory component antibody (FITC) followed by GTX04126-25 Goat Anti-Human IgA (Heavy chain) antibody, pre-adsorbed (TRITC).



For full product information, images and publications, please visit our [website](#).