



SZABO SCANDIC

Part of Europa Biosite

Produktinformation



Forschungsprodukte & Biochemikalien



Zellkultur & Verbrauchsmaterial



Diagnostik & molekulare Diagnostik



Laborgeräte & Service

Weitere Information auf den folgenden Seiten!
See the following pages for more information!



Lieferung & Zahlungsart

siehe unsere [Liefer- und Versandbedingungen](#)

Zuschläge

- Mindermengenzuschlag
- Trockeneiszuschlag
- Gefahrgutzuschlag
- Expressversand

SZABO-SCANDIC HandelsgmbH

Quellenstraße 110, A-1100 Wien

T. +43(0)1 489 3961-0

F. +43(0)1 489 3961-7

mail@szabo-scandic.com

www.szabo-scandic.com

[linkedin.com/company/szaboscandic](https://www.linkedin.com/company/szaboscandic) 

Goat Anti-Human kappa light chain antibody, pre-adsorbed (PE)

Cat. No. GTX04130-08

Host	Goat
Clonality	Polyclonal
Isotype	IgG
Application	FACS, ELISA
Reactivity	Human

Package
500 µg

APPLICATION

Application Note

*Optimal dilutions/concentrations should be determined by the researcher.

Suggested dilution	Recommended dilution
FACS	$\leq 0.1 \mu\text{g}/10^6\text{cells}$
ELISA	$\leq 1 \mu\text{g}/\text{mL}$

Note : The suggested use of these reagents is in a final volume of 100µl.

Not tested in other applications.

Product Note

Pre-adsorbed with Human λ light chains; mouse immunoglobulins and pooled sera. May react with κ light chains from other species.

PROPERTIES

Form	Liquid
Buffer	PBS, a stabilizer
Preservative	0.09% sodium azide
Storage	Store as concentrated solution. Centrifuge briefly prior to opening vial. Store at 4°C. DO NOT FREEZE. Protect from light.
Concentration	0.5 mg/ml (Please refer to the vial label for the specific concentration.)
Immunogen	Pooled antisera from goats hyperimmunized with human κ light chains
Purification	Purified by antigen-affinity chromatography
Conjugation	Phycoerythrin (PE)

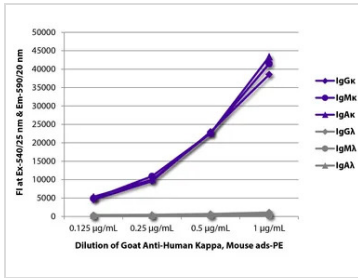
Note

For laboratory research use only. Not for any clinical, therapeutic, or diagnostic use in humans or animals. Not for animal or human consumption.

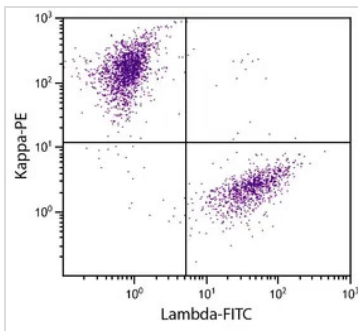
Purchasers shall not, and agree not to enable third parties to, analyze, copy, reverse engineer or otherwise attempt to determine the structure or sequence of the product.



For full product information, images and publications, please visit our [website](#).

DATA IMAGES

GTX04130-08 ELISA Image

ELISA analysis of purified human immunoglobulins using serially diluted GTX04130-08 Goat Anti-Human kappa light chain antibody, pre-adsorbed (PE).


GTX04130-08 FACS Image

FACS analysis of CD19+ human B-lymphocytes using Goat Anti-Human Lambda antibody, F(ab')₂ fragment, pre-adsorbed (FITC) and GTX04130-08 Goat Anti-Human kappa light chain antibody, pre-adsorbed (PE).



For full product information, images and publications, please visit our [website](#).