



SZABO SCANDIC

Part of Europa Biosite

Produktinformation



Forschungsprodukte & Biochemikalien



Zellkultur & Verbrauchsmaterial



Diagnostik & molekulare Diagnostik



Laborgeräte & Service

Weitere Information auf den folgenden Seiten!
See the following pages for more information!



Lieferung & Zahlungsart

siehe unsere [Liefer- und Versandbedingungen](#)

Zuschläge

- Mindermengenzuschlag
- Trockeneiszuschlag
- Gefahrgutzuschlag
- Expressversand

SZABO-SCANDIC HandelsgmbH

Quellenstraße 110, A-1100 Wien

T. +43(0)1 489 3961-0

F. +43(0)1 489 3961-7

mail@szabo-scandic.com

www.szabo-scandic.com

[linkedin.com/company/szaboscandic](https://www.linkedin.com/company/szaboscandic) 

Goat Anti-Human kappa light chain antibody, F(ab')₂ fragment, pre-adsorbed (FITC)

Cat. No. GTX04131-06

Host	Goat
Clonality	Polyclonal
Isotype	IgG F(ab') ₂
Application	WB, ICC/IF, FACS, ELISA, Activation
Reactivity	Human

Package

500 µg

APPLICATION

Application Note

*Optimal dilutions/concentrations should be determined by the researcher.

Suggested dilution	Recommended dilution
--------------------	----------------------

WB	Assay dependent
----	-----------------

ICC/IF	Assay dependent
--------	-----------------

FACS	≤ 1 µg/10 ⁶ cells
------	------------------------------

ELISA	1:200-1:400
-------	-------------

Activation	Assay dependent
------------	-----------------

Note : The suggested use of these reagents is in a final volume of 100µl.

Not tested in other applications.

Product Note Pre-adsorbed with Human λ light chains. May react with κ light chains from other species.

PROPERTIES

Form	Liquid
-------------	--------

Buffer	PBS
---------------	-----

Preservative	0.09% sodium azide
---------------------	--------------------

Storage	Store as concentrated solution. Centrifuge briefly prior to opening vial. Store at 4°C. Protect from light.
----------------	---

Concentration	0.5 mg/ml (Please refer to the vial label for the specific concentration.)
----------------------	--

Immunogen	Pepsin digest of Goat Anti-Human Kappa.
------------------	---

Purification	Purified IgG
---------------------	--------------

Conjugation	Fluorescein isothiocyanate (FITC)
--------------------	-----------------------------------

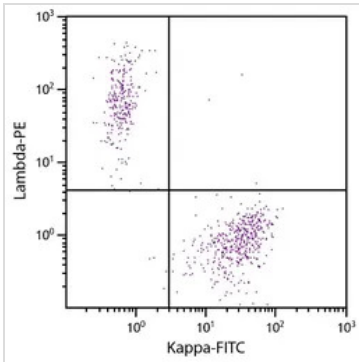


For full product information, images and publications, please visit our [website](#).

For laboratory research use only. Not for any clinical, therapeutic, or diagnostic use in humans or animals. Not for animal or human consumption.

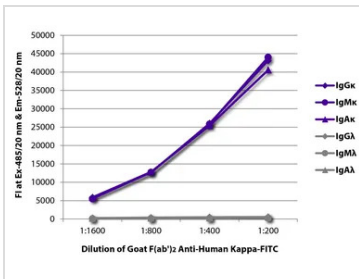
Note
 Purchasers shall not, and agree not to enable third parties to, analyze, copy, reverse engineer or otherwise attempt to determine the structure or sequence of the product.

DATA IMAGES



GTX04131-06 FACS Image

FACS analysis of CD19+ human B-lymphocytes using Goat Anti-Human Lambda antibody, F(ab')₂ fragment, pre-adsorbed (PE) and GTX04131-06 Goat Anti-Human kappa light chain antibody, F(ab')₂ fragment, pre-adsorbed (FITC).



GTX04131-06 ELISA Image

ELISA analysis of purified human immunoglobulins using serially diluted GTX04131-06 Goat Anti-Human kappa light chain antibody, F(ab')₂ fragment, pre-adsorbed (FITC).



For full product information, images and publications, please visit our [website](#).