



# SZABO SCANDIC

Part of Europa Biosite

## Produktinformation



Forschungsprodukte & Biochemikalien



Zellkultur & Verbrauchsmaterial



Diagnostik & molekulare Diagnostik



Laborgeräte & Service

Weitere Information auf den folgenden Seiten!  
See the following pages for more information!



### Lieferung & Zahlungsart

siehe unsere [Liefer- und Versandbedingungen](#)

### Zuschläge

- Mindermengenzuschlag
- Trockeneiszuschlag
- Gefahrgutzuschlag
- Expressversand

### SZABO-SCANDIC HandelsgmbH

Quellenstraße 110, A-1100 Wien

T. +43(0)1 489 3961-0

F. +43(0)1 489 3961-7

[mail@szabo-scandic.com](mailto:mail@szabo-scandic.com)

[www.szabo-scandic.com](http://www.szabo-scandic.com)

[linkedin.com/company/szaboscandic](https://www.linkedin.com/company/szaboscandic) 

# Goat Anti-Human kappa light chain antibody, F(ab')<sub>2</sub> fragment, pre-adsorbed (PE)

## Cat. No. GTX04131-08

<b>Host</b>	Goat
<b>Clonality</b>	Polyclonal
<b>Isotype</b>	IgG F(ab') <sub>2</sub>
<b>Application</b>	WB, ICC/IF, FACS, ELISA, Activation
<b>Reactivity</b>	Human

**Package**

250 µg

### APPLICATION

#### Application Note

\*Optimal dilutions/concentrations should be determined by the researcher.

Suggested dilution	Recommended dilution
WB	Assay dependent
ICC/IF	Assay dependent
FACS	≤ 0.05 µg/10 <sup>6</sup> cells
ELISA	1:200-1:400
Activation	Assay dependent

**Note : The suggested use of these reagents is in a final volume of 100µl.**

Not tested in other applications.

#### Product Note

Pre-adsorbed with Human λ light chains. May react with κ light chains from other species.

### PROPERTIES

<b>Form</b>	Liquid
<b>Buffer</b>	PBS, a stabilizer
<b>Preservative</b>	0.09% sodium azide
<b>Storage</b>	Store as concentrated solution. Centrifuge briefly prior to opening vial. Store at 4°C. DO NOT FREEZE. Protect from light.
<b>Concentration</b>	0.25 mg/ml (Please refer to the vial label for the specific concentration.)
<b>Immunogen</b>	Pepsin digest of Goat Anti-Human Kappa.
<b>Purification</b>	Purified IgG
<b>Conjugation</b>	Phycoerythrin (PE)

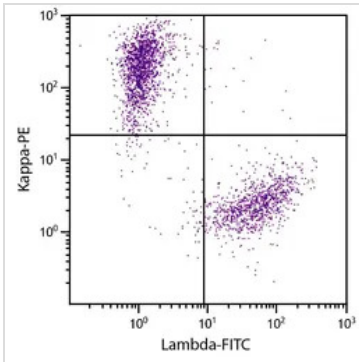


For full product information, images and publications, please visit our [website](#).

For laboratory research use only. Not for any clinical, therapeutic, or diagnostic use in humans or animals. Not for animal or human consumption.

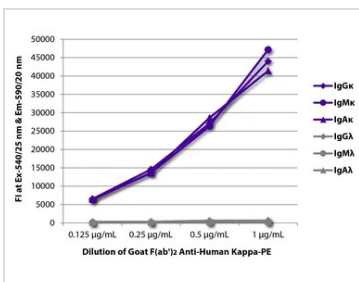
**Note**  
 Purchasers shall not, and agree not to enable third parties to, analyze, copy, reverse engineer or otherwise attempt to determine the structure or sequence of the product.

DATA IMAGES



**GTX04131-08 FACS Image**

FACS analysis of CD19+ human B-lymphocytes using Goat Anti-Human Lambda antibody, F(ab')<sub>2</sub> fragment, pre-adsorbed (FITC) and GTX04131-08 Goat Anti-Human kappa light chain antibody, F(ab')<sub>2</sub> fragment, pre-adsorbed (PE).



**GTX04131-08 ELISA Image**

ELISA analysis of purified human immunoglobulins using serially diluted GTX04131-08 Goat Anti-Human kappa light chain antibody, F(ab')<sub>2</sub> fragment, pre-adsorbed (PE).



For full product information, images and publications, please visit our [website](#).