



# SZABO SCANDIC

Part of Europa Biosite

## Produktinformation



Forschungsprodukte & Biochemikalien



Zellkultur & Verbrauchsmaterial



Diagnostik & molekulare Diagnostik



Laborgeräte & Service

Weitere Information auf den folgenden Seiten!  
See the following pages for more information!



### Lieferung & Zahlungsart

siehe unsere [Liefer- und Versandbedingungen](#)

### Zuschläge

- Mindermengenzuschlag
- Trockeneiszuschlag
- Gefahrgutzuschlag
- Expressversand

### SZABO-SCANDIC HandelsgmbH

Quellenstraße 110, A-1100 Wien

T. +43(0)1 489 3961-0

F. +43(0)1 489 3961-7

[mail@szabo-scandic.com](mailto:mail@szabo-scandic.com)

[www.szabo-scandic.com](http://www.szabo-scandic.com)

[linkedin.com/company/szaboscandic](https://www.linkedin.com/company/szaboscandic) 

## Goat Anti-Human lambda light chain antibody, pre-adsorbed (AP)

Cat. No. GTX04134-03

<b>Host</b>	Goat
<b>Clonality</b>	Polyclonal
<b>Isotype</b>	IgG
<b>Application</b>	FACS, ELISA
<b>Reactivity</b>	Human

Package  
1 ml

## APPLICATION

## Application Note

\*Optimal dilutions/concentrations should be determined by the researcher.

Suggested dilution	Recommended dilution
FACS	Assay dependent
ELISA	1:2000-1:4000

Not tested in other applications.

## Product Note

Pre-adsorbed with Human  $\kappa$  light chains; mouse immunoglobulins and pooled sera. May react with  $\lambda$  light chains from other species.

## PROPERTIES

<b>Form</b>	Liquid
<b>Buffer</b>	50 mM Tris, 1 mM MgCl <sub>2</sub> , 50% Glycerol
<b>Preservative</b>	0.09% sodium azide
<b>Storage</b>	Store as concentrated solution. Centrifuge briefly prior to opening vial. Store at 4°C.
<b>Concentration</b>	Batch dependent (Please refer to the vial label for the specific concentration.)
<b>Immunogen</b>	Pooled antisera from goats hyperimmunized with human $\lambda$ light chains
<b>Purification</b>	Purified by antigen-affinity chromatography
<b>Conjugation</b>	Alkaline Phosphatase (AP)

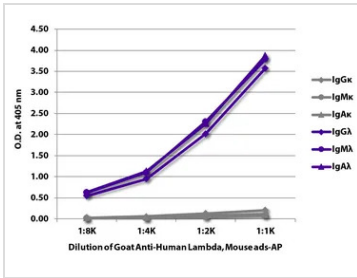
## Note

For laboratory research use only. Not for any clinical, therapeutic, or diagnostic use in humans or animals. Not for animal or human consumption.

Purchasers shall not, and agree not to enable third parties to, analyze, copy, reverse engineer or otherwise attempt to determine the structure or sequence of the product.



For full product information, images and publications, please visit our [website](#).

**DATA IMAGES**

**GTX04134-03 ELISA Image**

ELISA analysis of purified human immunoglobulins using serially diluted GTX04134-03 Goat Anti-Human lambda light chain antibody, pre-adsorbed (AP).



For full product information, images and publications, please visit our [website](#).