



SZABO SCANDIC

Part of Europa Biosite

Produktinformation



Forschungsprodukte & Biochemikalien



Zellkultur & Verbrauchsmaterial



Diagnostik & molekulare Diagnostik



Laborgeräte & Service

Weitere Information auf den folgenden Seiten!
See the following pages for more information!



Lieferung & Zahlungsart

siehe unsere [Liefer- und Versandbedingungen](#)

Zuschläge

- Mindermengenzuschlag
- Trockeneiszuschlag
- Gefahrgutzuschlag
- Expressversand

SZABO-SCANDIC HandelsgmbH

Quellenstraße 110, A-1100 Wien

T. +43(0)1 489 3961-0

F. +43(0)1 489 3961-7

mail@szabo-scandic.com

www.szabo-scandic.com

[linkedin.com/company/szaboscandic](https://www.linkedin.com/company/szaboscandic) 

Mouse Anti-Rat IgG2b antibody [2B10A8] (PE)

Cat. No. GTX04141-08

Host	Mouse
Clonality	Monoclonal
Isotype	IgG2b
Application	WB, IHC-Fr, FACS, ELISA
Reactivity	Rat

Package
100 µg

APPLICATION

Application Note

*Optimal dilutions/concentrations should be determined by the researcher.

Suggested dilution	Recommended dilution
WB	Assay dependent
IHC-Fr	Assay dependent
FACS	$\leq 0.1 \mu\text{g}/10^6\text{cells}$
ELISA	$\leq 1 \mu\text{g}/\text{mL}$

Note : The suggested use of these reagents is in a final volume of 100µl.

Not tested in other applications.

PROPERTIES

Form	Liquid
Buffer	PBS, a stabilizer
Preservative	0.09% sodium azide
Storage	Store as concentrated solution. Centrifuge briefly prior to opening vial. Store at 4°C. DO NOT FREEZE. Protect from light.
Concentration	0.1 mg/ml (Please refer to the vial label for the specific concentration.)
Immunogen	Rat IgG2b hybridoma
Purification	Purified IgG2b
Conjugation	Phycoerythrin (PE)

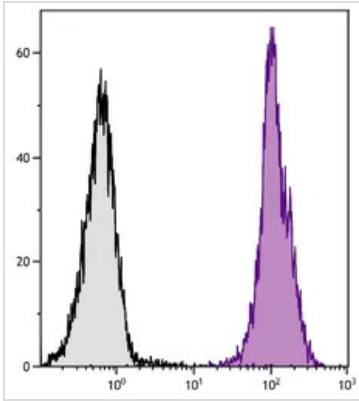
Note For laboratory research use only. Not for any clinical, therapeutic, or diagnostic use in humans or animals. Not for animal or human consumption.

Purchasers shall not, and agree not to enable third parties to, analyze, copy, reverse engineer or otherwise attempt to determine the structure or sequence of the product.



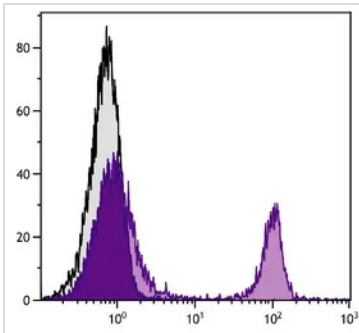
For full product information, images and publications, please visit our [website](#).

DATA IMAGES



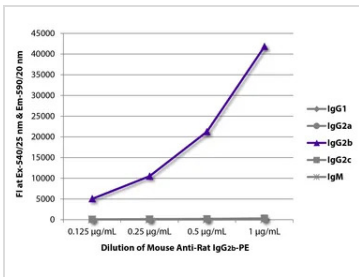
GTX04141-08 FACS Image

FACS analysis of BALB/c mouse splenocytes using Rat Anti-Mouse CD45 antibody followed by GTX04141-08 Mouse Anti-Rat IgG2b antibody [2B10A8] (PE).



GTX04141-08 FACS Image

FACS analysis of BALB/c mouse splenocytes using Rat Anti-Mouse CD4 antibody followed by GTX04141-08 Mouse Anti-Rat IgG2b antibody [2B10A8] (PE).



GTX04141-08 ELISA Image

ELISA analysis of purified rat immunoglobulins using serially diluted GTX04141-08 Mouse Anti-Rat IgG2b antibody [2B10A8] (PE).



For full product information, images and publications, please visit our [website](#).