



# SZABO SCANDIC

Part of Europa Biosite

## Produktinformation



Forschungsprodukte & Biochemikalien



Zellkultur & Verbrauchsmaterial



Diagnostik & molekulare Diagnostik



Laborgeräte & Service

Weitere Information auf den folgenden Seiten!  
See the following pages for more information!



### Lieferung & Zahlungsart

siehe unsere [Liefer- und Versandbedingungen](#)

### Zuschläge

- Mindermengenzuschlag
- Trockeneiszuschlag
- Gefahrgutzuschlag
- Expressversand

### SZABO-SCANDIC HandelsgmbH

Quellenstraße 110, A-1100 Wien

T. +43(0)1 489 3961-0

F. +43(0)1 489 3961-7

[mail@szabo-scandic.com](mailto:mail@szabo-scandic.com)

[www.szabo-scandic.com](http://www.szabo-scandic.com)

[linkedin.com/company/szaboscandic](https://www.linkedin.com/company/szaboscandic) 

Rabbit Anti-Human IgG antibody, F(ab')<sub>2</sub> fragment, pre-adsorbed**Cat. No. GTX04155**

<b>Host</b>	Rabbit
<b>Clonality</b>	Polyclonal
<b>Isotype</b>	IgG F(ab') <sub>2</sub>
<b>Application</b>	ELISA
<b>Reactivity</b>	Human

Package  
500 µg

## APPLICATION

**Application Note**

\*Optimal dilutions/concentrations should be determined by the researcher.

Suggested dilution	Recommended dilution
ELISA	Assay dependent

Not tested in other applications.

**Product Note**

Reacts with the heavy and light chains of human IgG and the light chains of human IgM and IgA. Pre-adsorbed with Mouse immunoglobulins and pooled sera. May react with immunoglobulins from other species

## PROPERTIES

<b>Form</b>	Liquid
<b>Buffer</b>	Borate buffered saline
<b>Preservative</b>	No preservatives
<b>Storage</b>	Store as concentrated solution. Centrifuge briefly prior to opening vial. Store at 4°C.
<b>Concentration</b>	0.5 mg/ml (Please refer to the vial label for the specific concentration.)
<b>Immunogen</b>	Pepsin digest of Rabbit Anti-Human IgG(H+L).
<b>Purification</b>	Purified IgG
<b>Conjugation</b>	Unconjugated

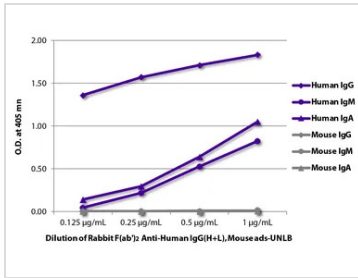
**Note**

For laboratory research use only. Not for any clinical, therapeutic, or diagnostic use in humans or animals. Not for animal or human consumption.

Purchasers shall not, and agree not to enable third parties to, analyze, copy, reverse engineer or otherwise attempt to determine the structure or sequence of the product.



For full product information, images and publications, please visit our [website](#).

**DATA IMAGES**

**GTX04155 ELISA Image**

ELISA analysis of purified human and mouse immunoglobulins using GTX04155 Rabbit Anti-Human IgG antibody, F(ab')<sub>2</sub> fragment, pre-adsorbed followed by Goat Anti-Rabbit IgG antibody (HRP).



For full product information, images and publications, please visit our [website](#).