



SZABO SCANDIC

Part of Europa Biosite

Produktinformation



Forschungsprodukte & Biochemikalien



Zellkultur & Verbrauchsmaterial



Diagnostik & molekulare Diagnostik



Laborgeräte & Service

Weitere Information auf den folgenden Seiten!
See the following pages for more information!



Lieferung & Zahlungsart

siehe unsere [Liefer- und Versandbedingungen](#)

Zuschläge

- Mindermengenzuschlag
- Trockeneiszuschlag
- Gefahrgutzuschlag
- Expressversand

SZABO-SCANDIC HandelsgmbH

Quellenstraße 110, A-1100 Wien

T. +43(0)1 489 3961-0

F. +43(0)1 489 3961-7

mail@szabo-scandic.com

www.szabo-scandic.com

[linkedin.com/company/szaboscandic](https://www.linkedin.com/company/szaboscandic) 

Rabbit Anti-Sheep IgG antibody, F(ab')₂ fragment, pre-adsorbed**Cat. No. GTX04157**

Host	Rabbit
Clonality	Polyclonal
Isotype	IgG F(ab') ₂
Application	ELISA
Reactivity	Sheep

Package
500 µg

APPLICATION

Application Note

*Optimal dilutions/concentrations should be determined by the researcher.

Suggested dilution	Recommended dilution
ELISA	Assay dependent

Not tested in other applications.

Product Note

Pre-adsorbed with Human serum proteins (SP). May react with immunoglobulins from other species and the light chains of other sheep immunoglobulins.

PROPERTIES

Form	Liquid
Buffer	Borate buffered saline
Preservative	No preservatives
Storage	Store as concentrated solution. Centrifuge briefly prior to opening vial. Store at 4°C.
Concentration	0.5 mg/ml (Please refer to the vial label for the specific concentration.)
Immunogen	Pepsin digest of Rabbit Anti-Sheep IgG(H+L).
Purification	Purified IgG
Conjugation	Unconjugated

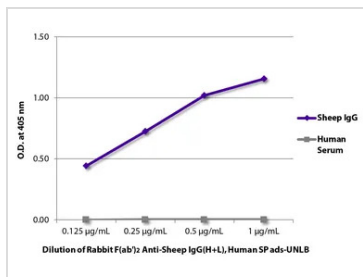
Note

For laboratory research use only. Not for any clinical, therapeutic, or diagnostic use in humans or animals. Not for animal or human consumption.

Purchasers shall not, and agree not to enable third parties to, analyze, copy, reverse engineer or otherwise attempt to determine the structure or sequence of the product.



For full product information, images and publications, please visit our [website](#).

DATA IMAGES

GTX04157 ELISA Image

ELISA analysis of purified sheep IgG and human serum using GTX04157 Rabbit Anti-Sheep IgG antibody, F(ab')₂ fragment, pre-adsorbed followed by Goat Anti-Rabbit IgG antibody, pre-adsorbed (HRP).



For full product information, images and publications, please visit our [website](#).